

Southampton Solent University New Sports Building

Welcome

On behalf of Southampton Solent University and the project team, we welcome you to our public exhibition for the New Sports Building at the northern end of the East Park Terrace Campus. The project team is on hand to answer any questions you may have about the proposals.

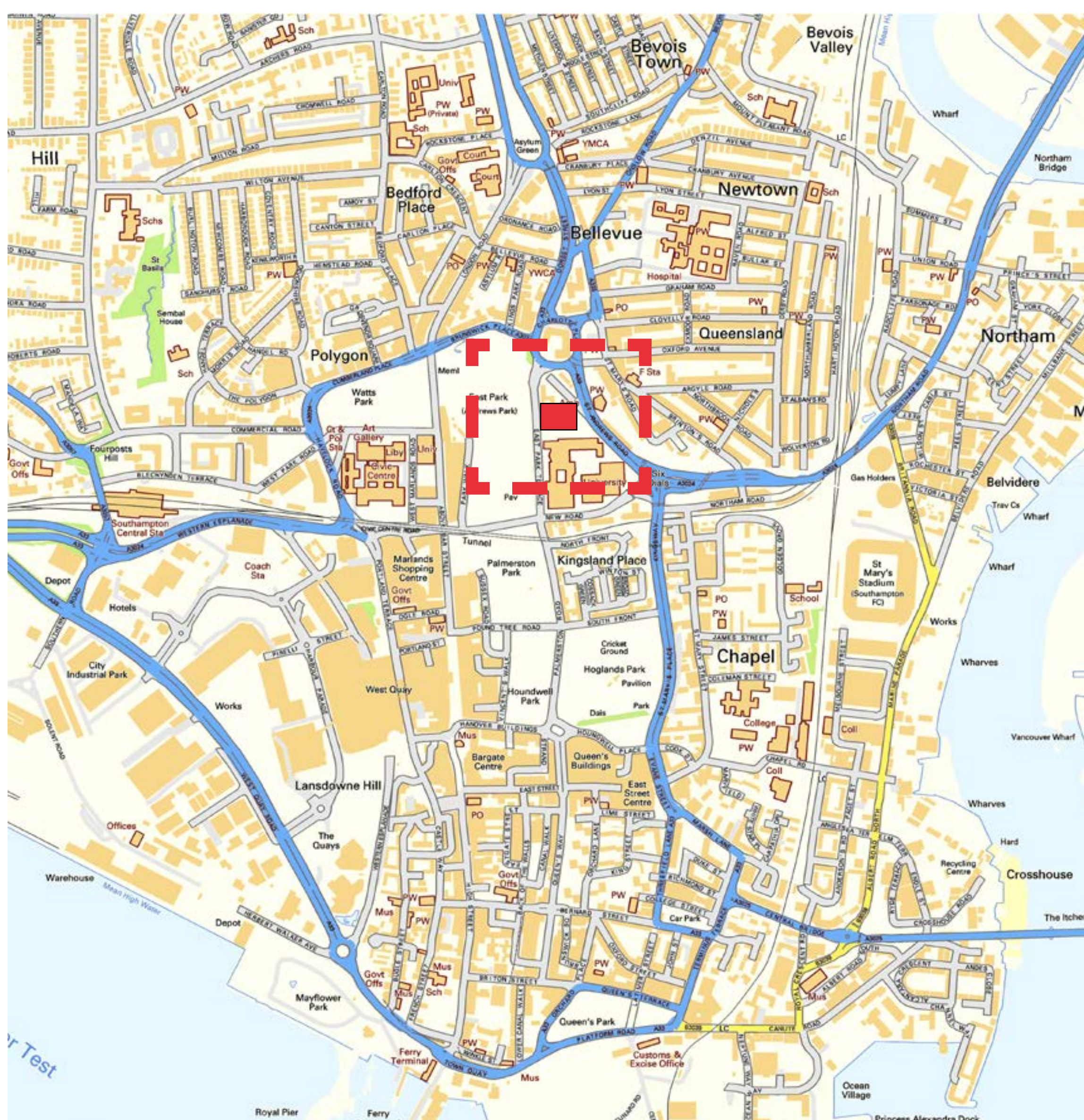
Project Brief:

Solent University's sports facilities are currently provided across a number of sites both on main East Park Terrace campus and at satellite sites across the city. One of these sites is the St Mary's Leisure Centre, where the lease ends in summer 2018. As a result of this, an opportunity has arisen to develop a new sports centre to ensure the continued provision of, and improvement to, the University's academic and extracurricular sport requirement.

The new sports facility will support and enable excellence in sport, health and fitness related degree programmes. It will also support the University's ambitions to increase its profile and standing in BUCS (British Universities & Colleges Sport) and provide national quality facilities for sports, especially basketball and netball.

The new building will be a key component of the University's expanding and considered offering to its diverse community.

The Site in Southampton



Development Policy:

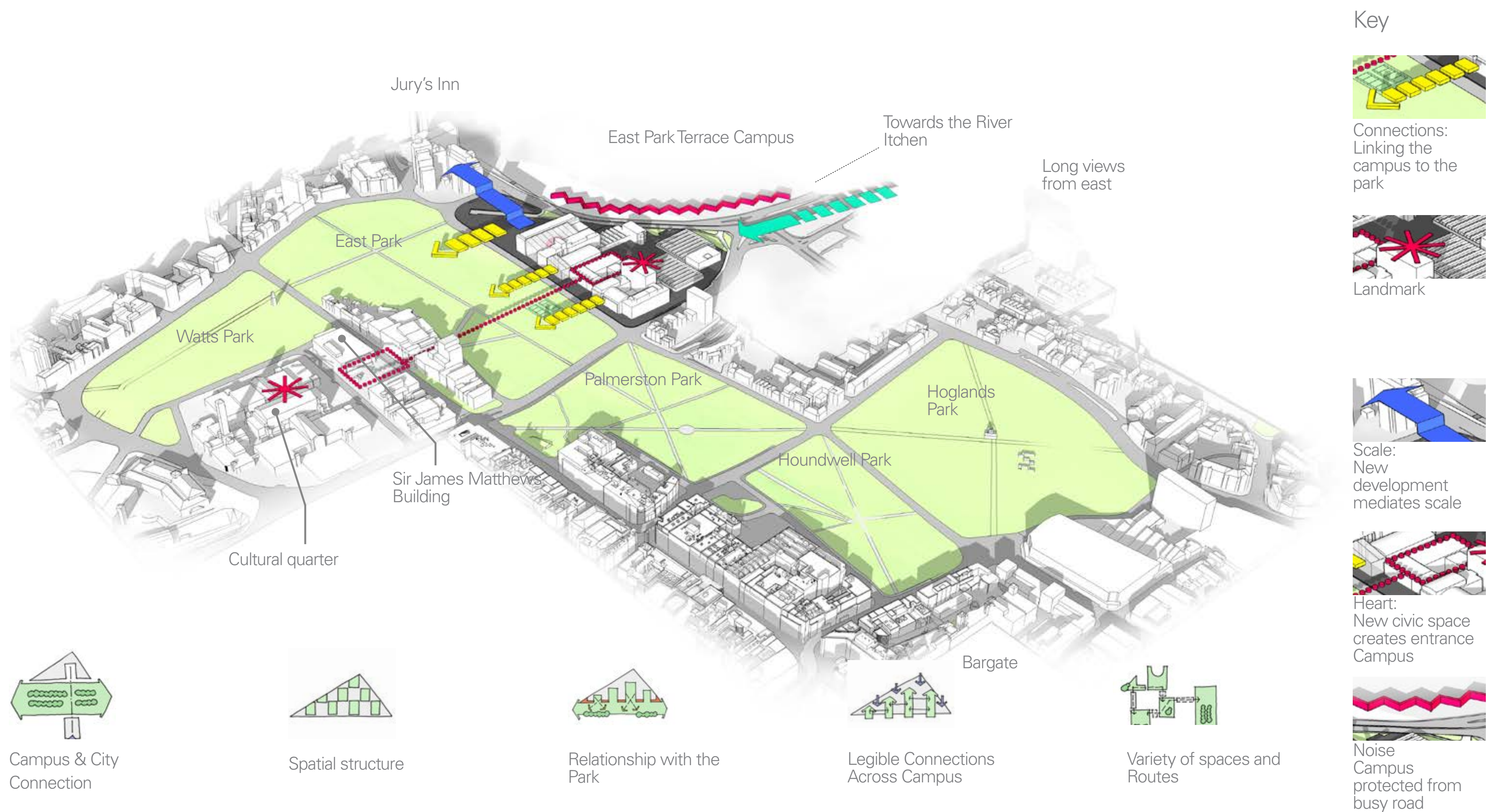
The adopted City Centre Area Action Plan (AAP) identifies the city centre area as an education hub. Policy AP11 seeks to Support Higher and Further Education Facilities. It states that the East Park Terrace Campus at Southampton Solent University is to be safeguarded for education and related facilities.

The policy supports the expansion of the University and identifies educational use as an acceptable element of development at East Park Terrace.

The proposal relates to the expansion of the University campus complying with this policy.



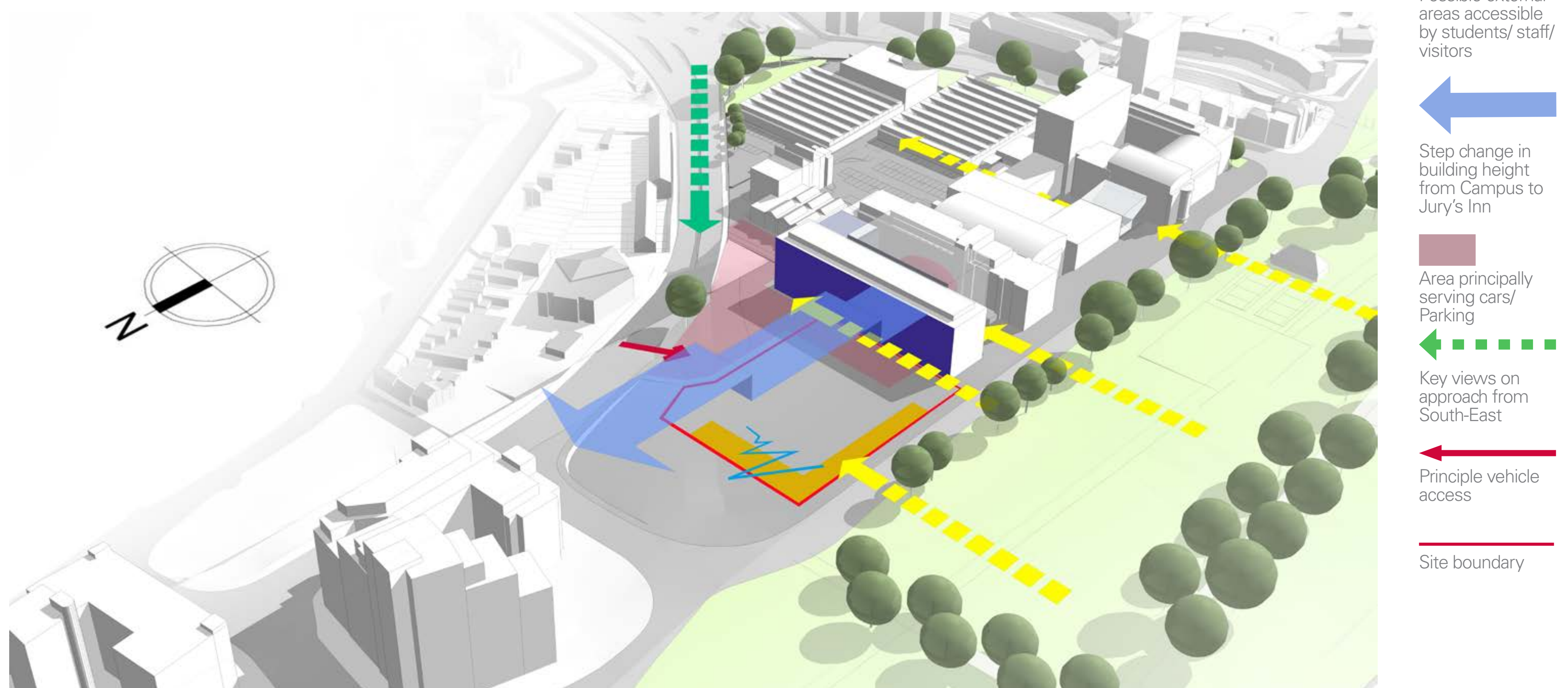
Southampton Solent University New Sports Building Campus Vision and Site



The Site

Opportunities and Constraints:

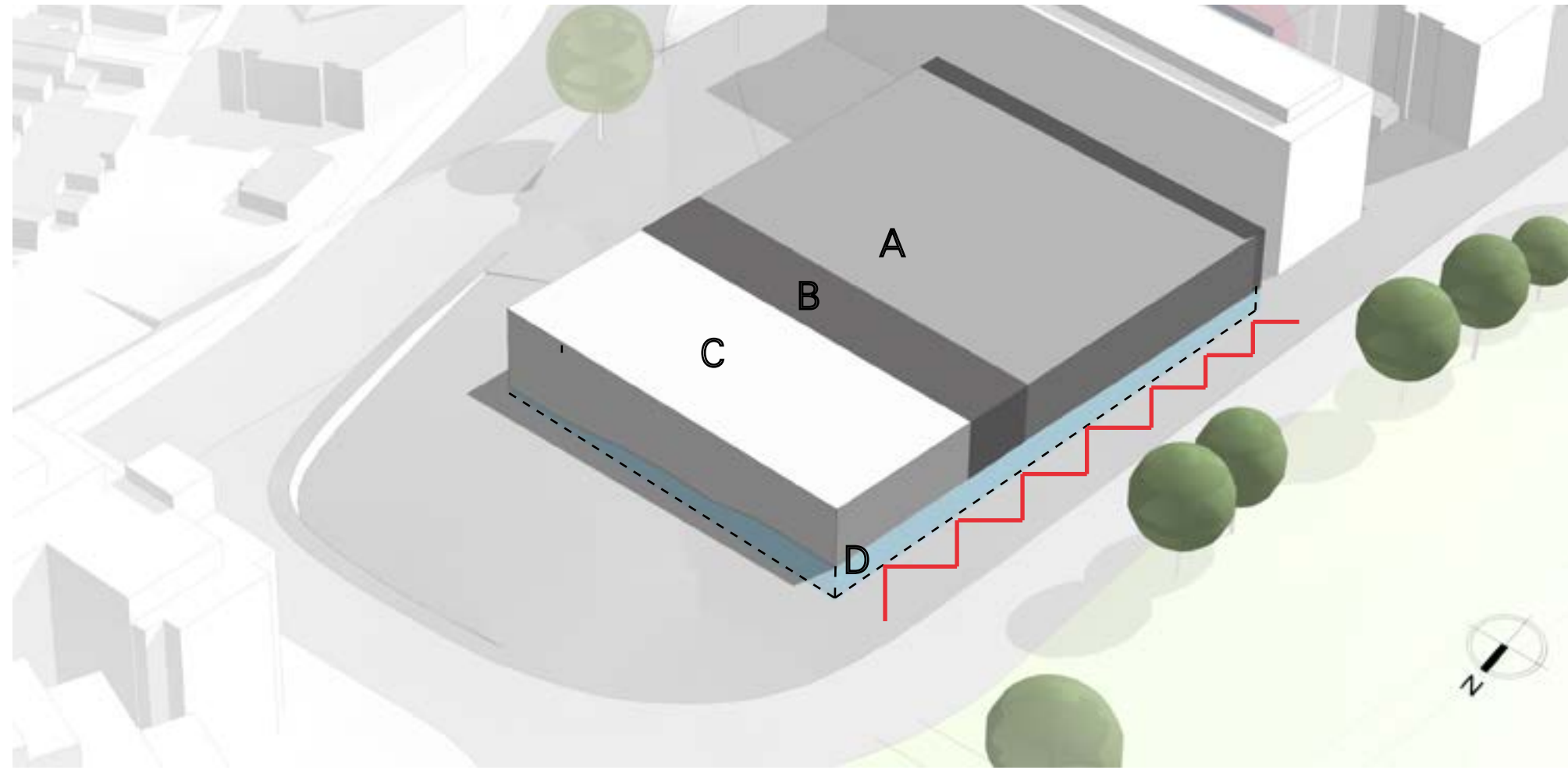
- Southern edge of the proposed site is dominated by the Spark building and new car park.
- Eastern edge of the site is restricted by the new access road into the university campus.
- The site fronts directly onto the East Park Terrace with unrestricted views on to the park opposite.
- The levels of the site fall approximately 6m from the north-west corner to the south-east corner.



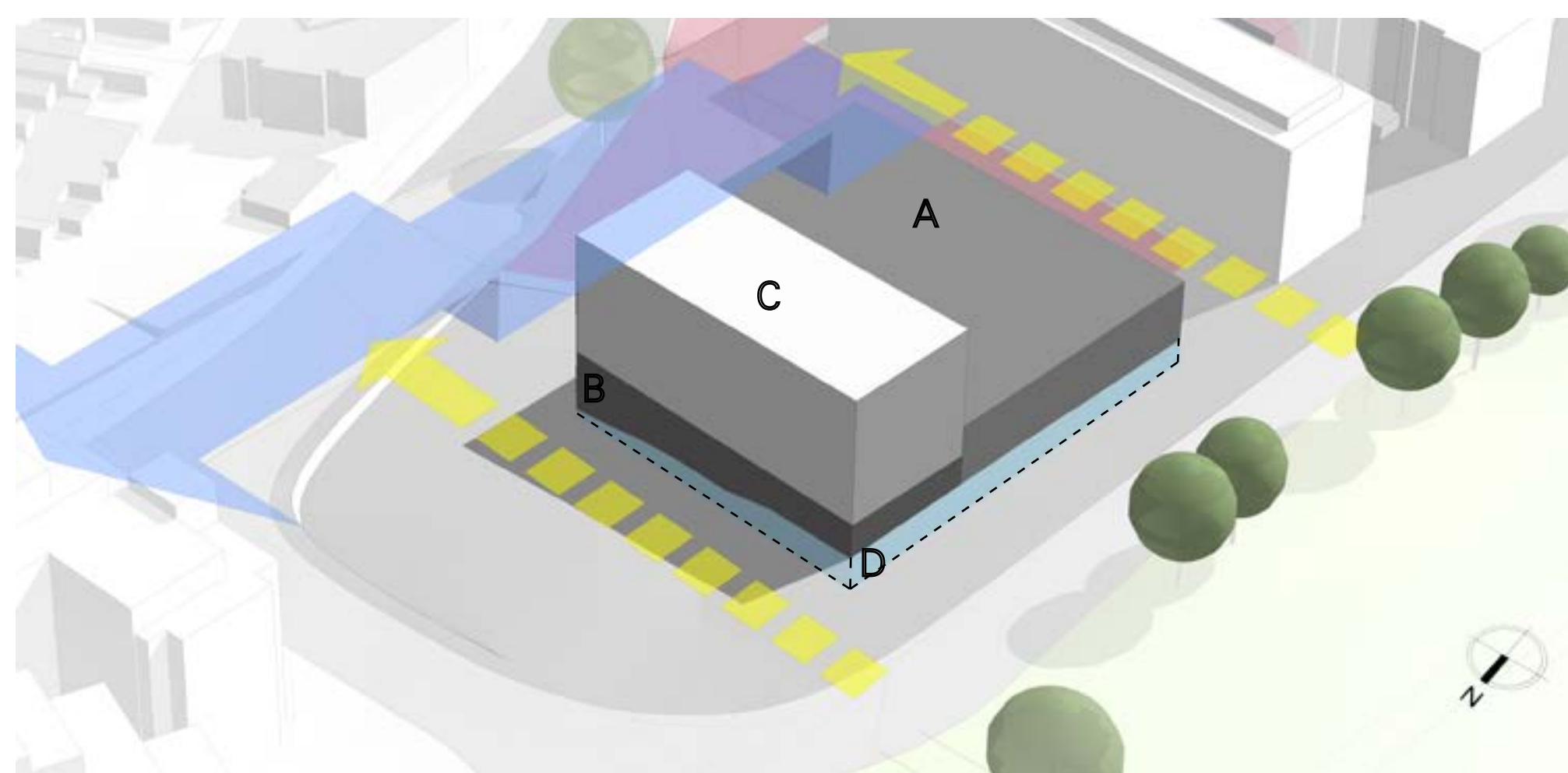
Southampton Solent University New Sports Building

Developing the Building Concept

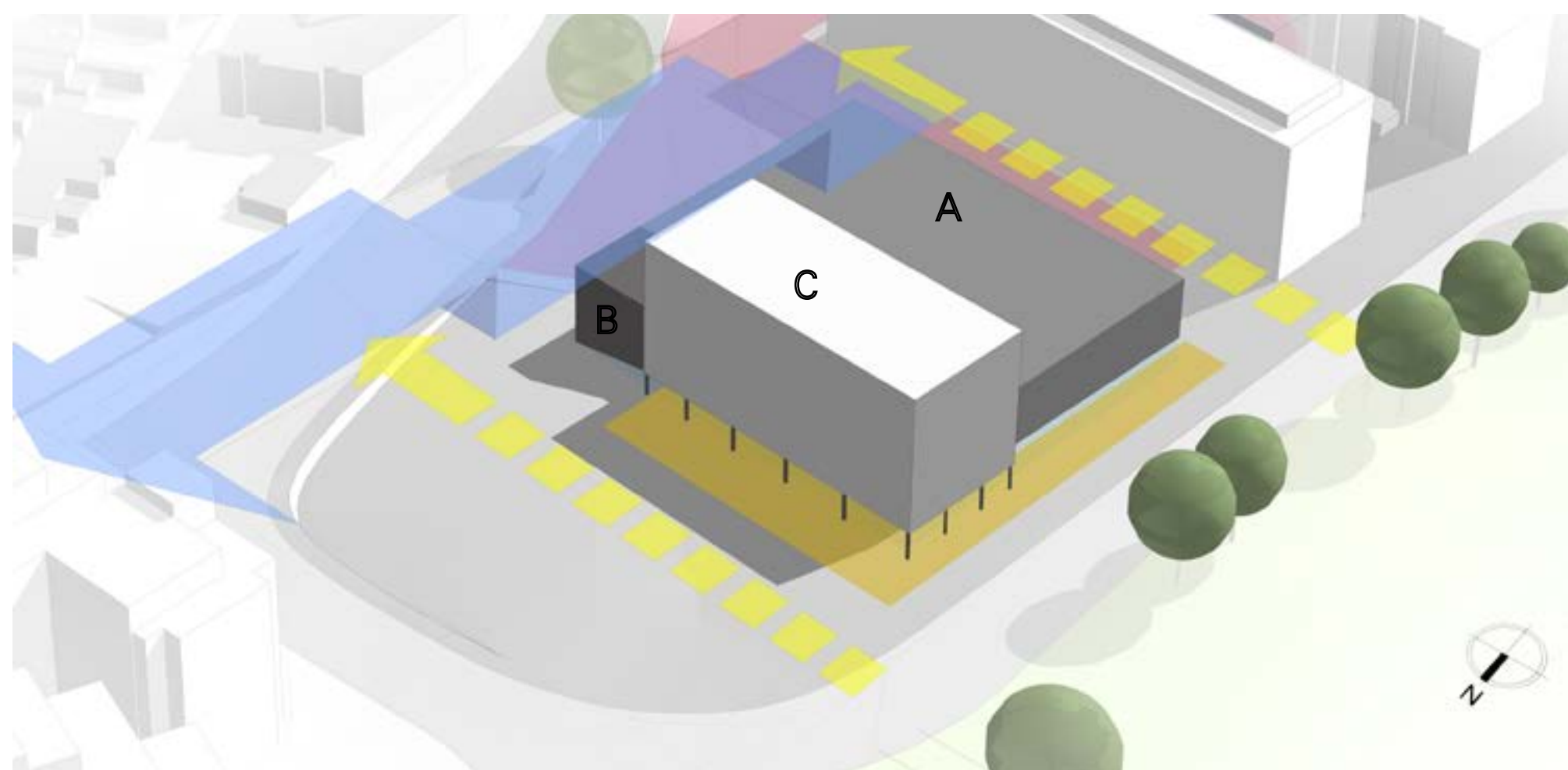
- Area A - Requirement for two Sports Halls.
- Area C - Requirement for Gym and Studio teaching spaces.
- Area B - Sports Hall services and changing facilities.
- Area D - Car park/Building plant.



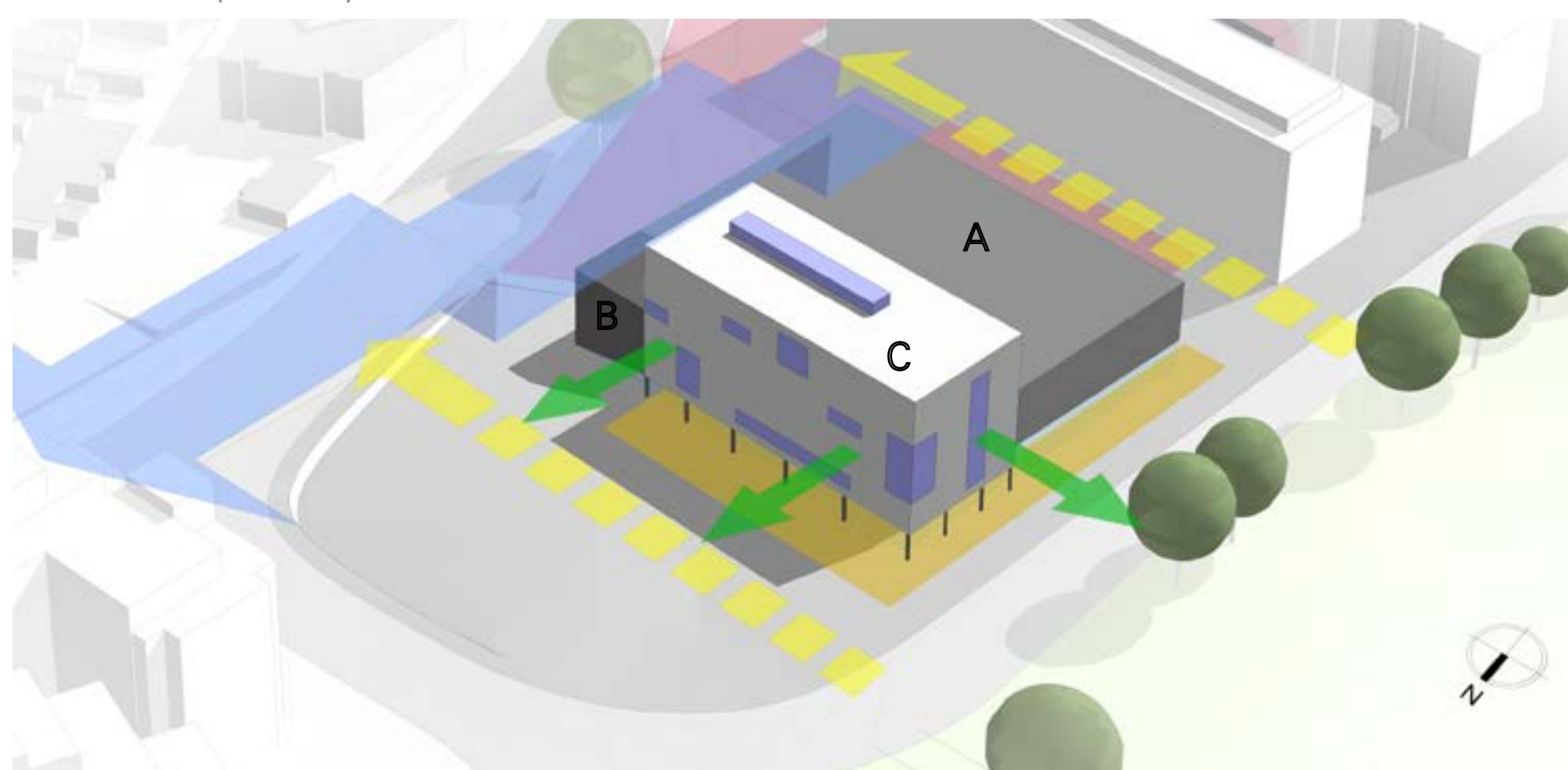
Linear frontage creates boundary between East Park and Campus and limits access across the site.



- Public space / courtyard
- Dot-dash typology of building along East Park Terrace.



- Potential for visual connection with Park and surrounding
- Accentuated windows arranged to capture key views



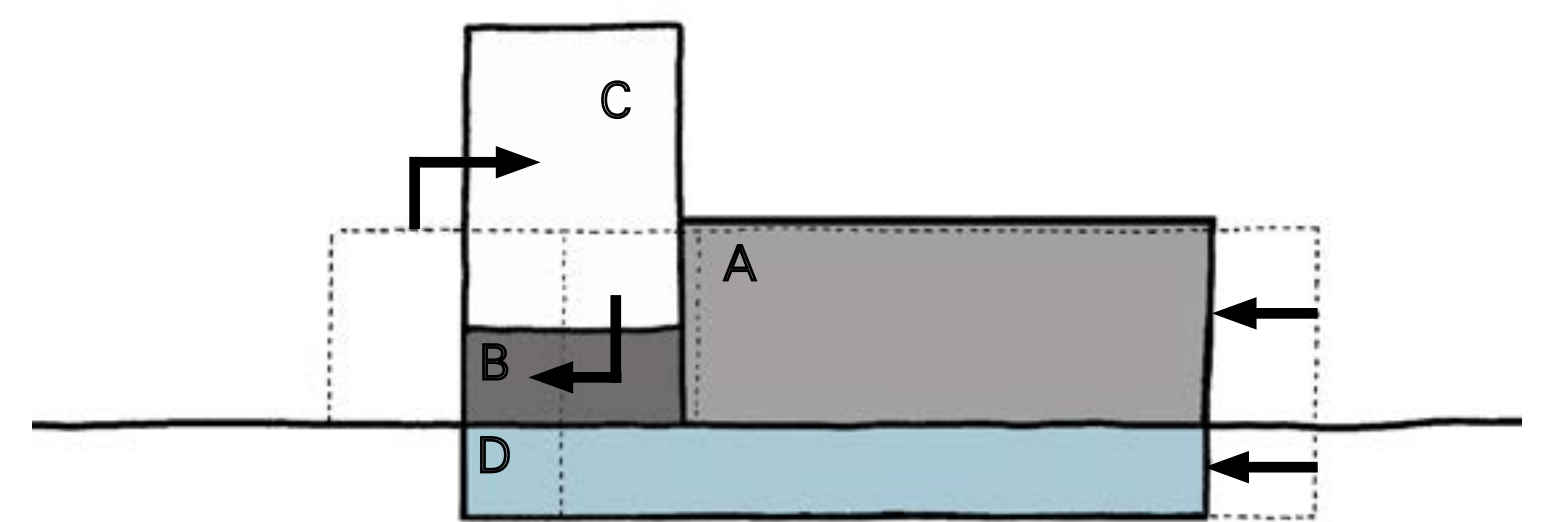
- Placing Area D under areas A, B, & C utilises level change across site to achieve additional floor below East Park Terrace.

However . . .

- Building volume takes up to much space on site extending past the site boundary to the north and abutting to the Spark at the south.
- Linear frontage creates boundary between East Park and Campus and limits access across the site.
- No usable external space is offered around the building.



Reduce Footprint



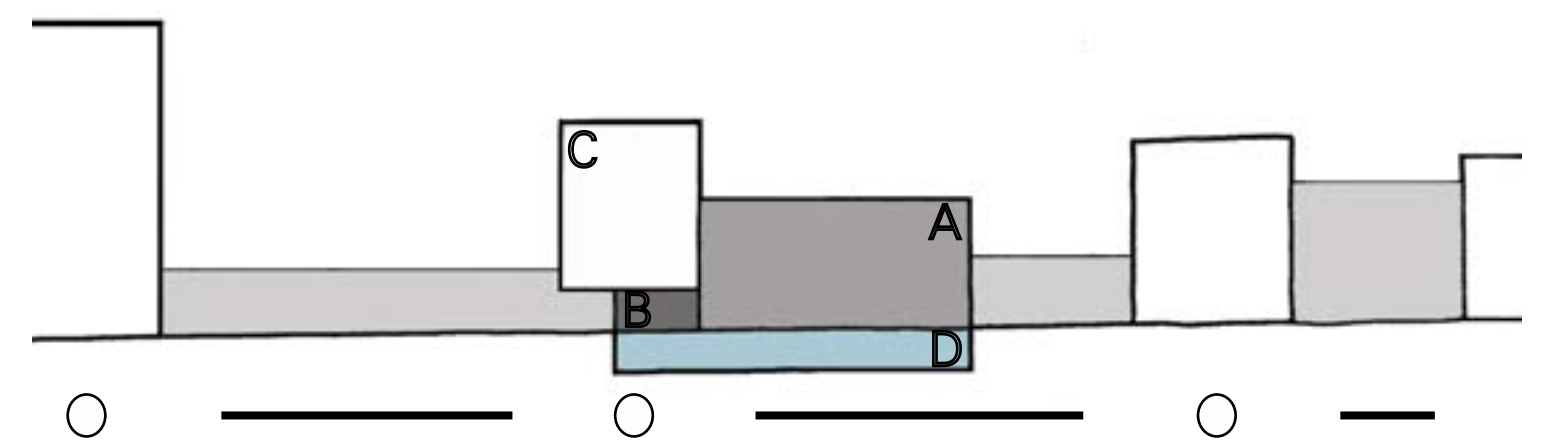
- Reduce building footprint by stacking Area C on top of Area B.
- Reduced footprint allows for a more compact development and increased access across site.

However . . .

- Relationship with the Park and external realm could be improved.



Articulate Blocks



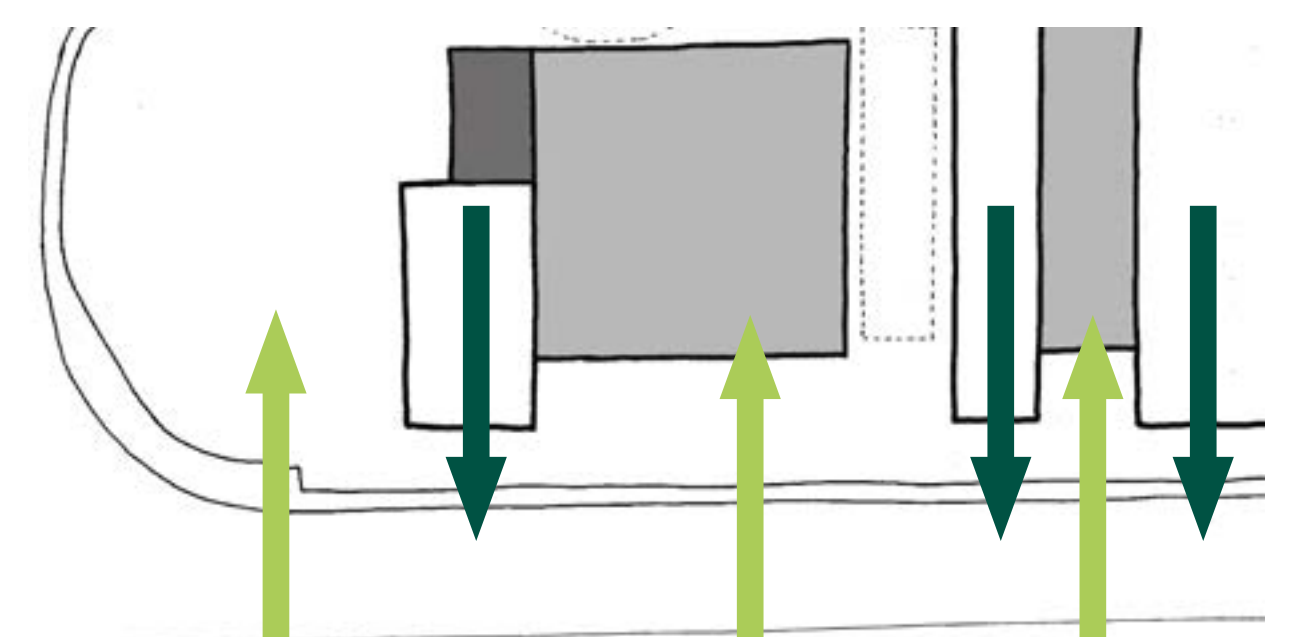
- Offsetting C above B helps to create usable public space under cover and announce the main entrance.

- Step in the elevation continues the dot-dash typology along East Park Terrace.

- Using the dot-dash typology of East Park Terrace to create a more staggered boundary between the Campus and the Park.



Connect With Park



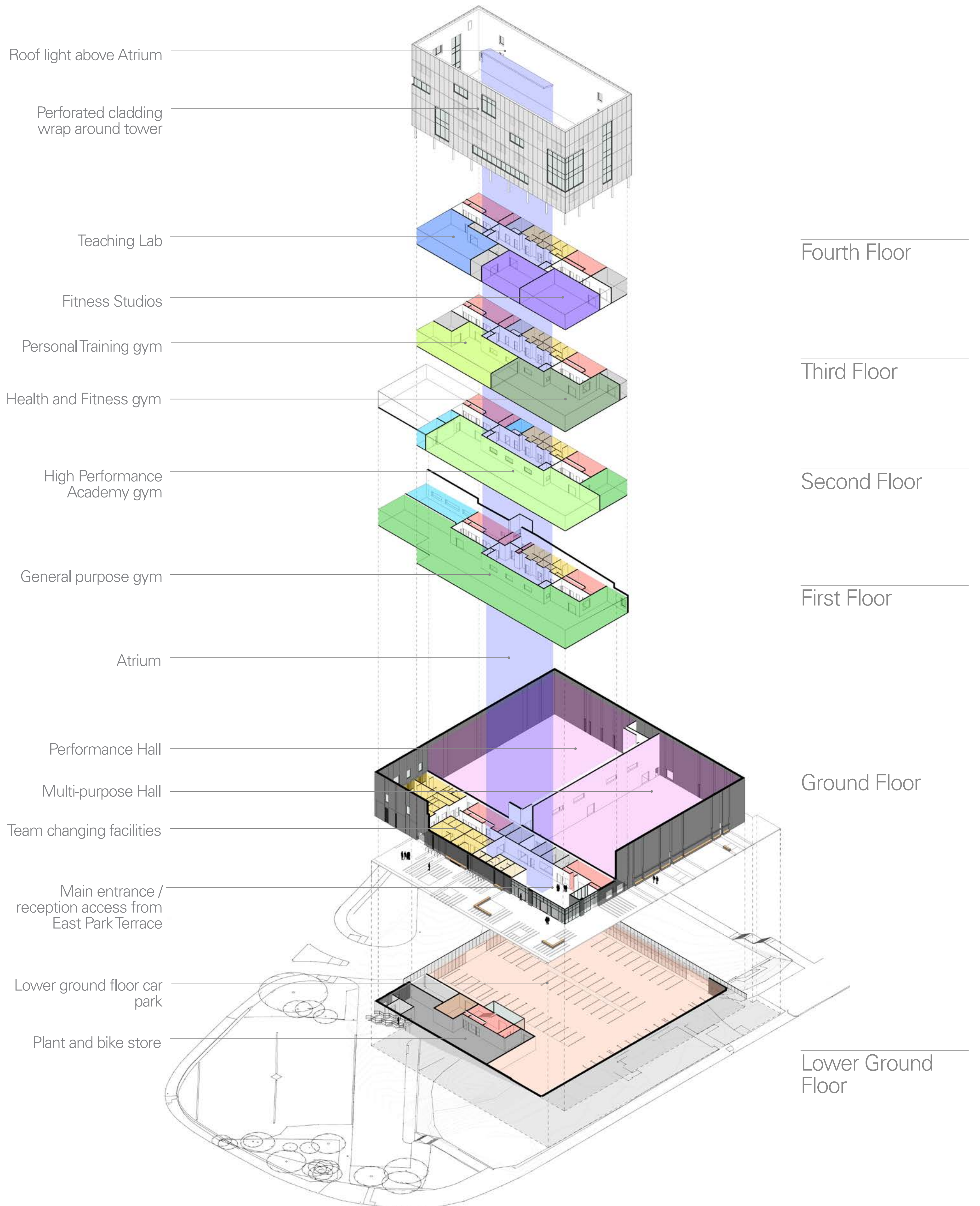
- Prominent position of C allows relationship with the Park, new courtyard, and St Andrews Road.

- Window positions arranged to capture key views.

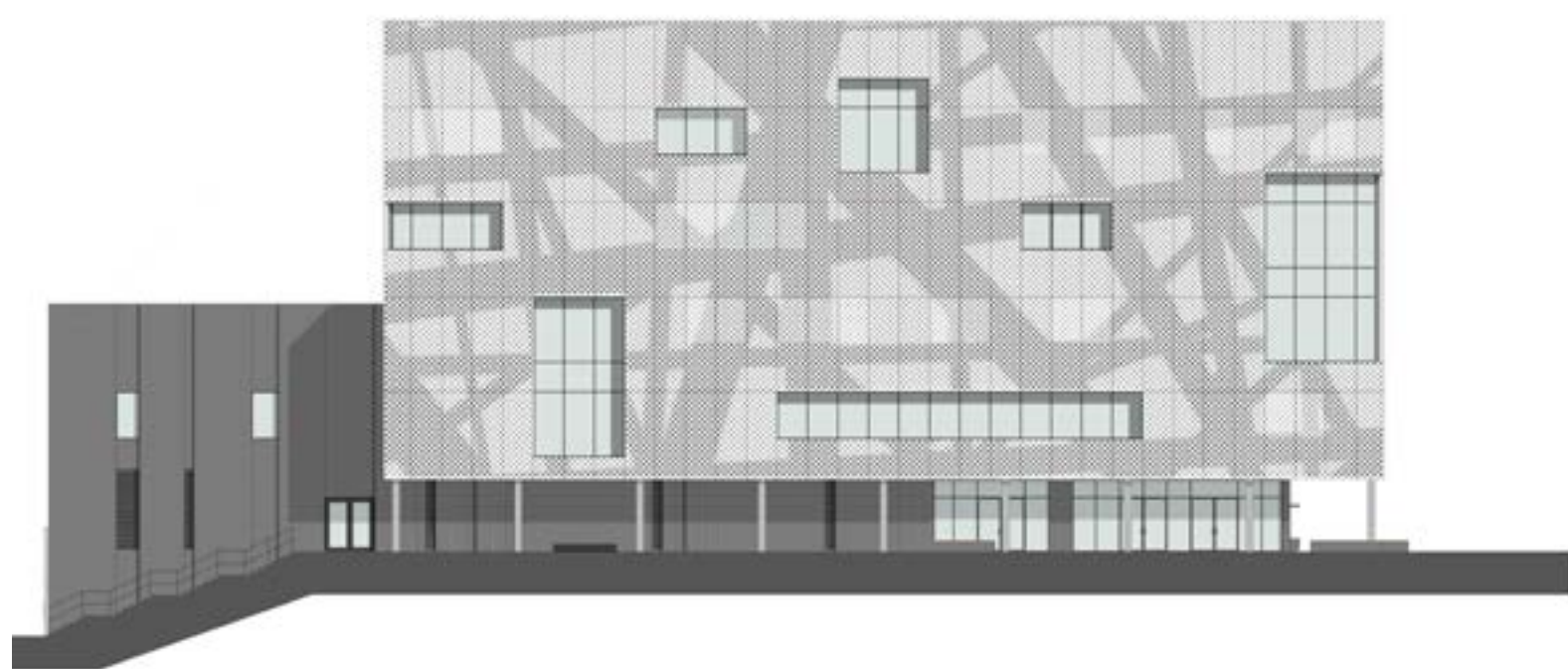
- Main internal spaces arranged to avoid southern aspect, this will alleviate solar gain and reduce the need for cooling.

Southampton Solent University New Sports Building

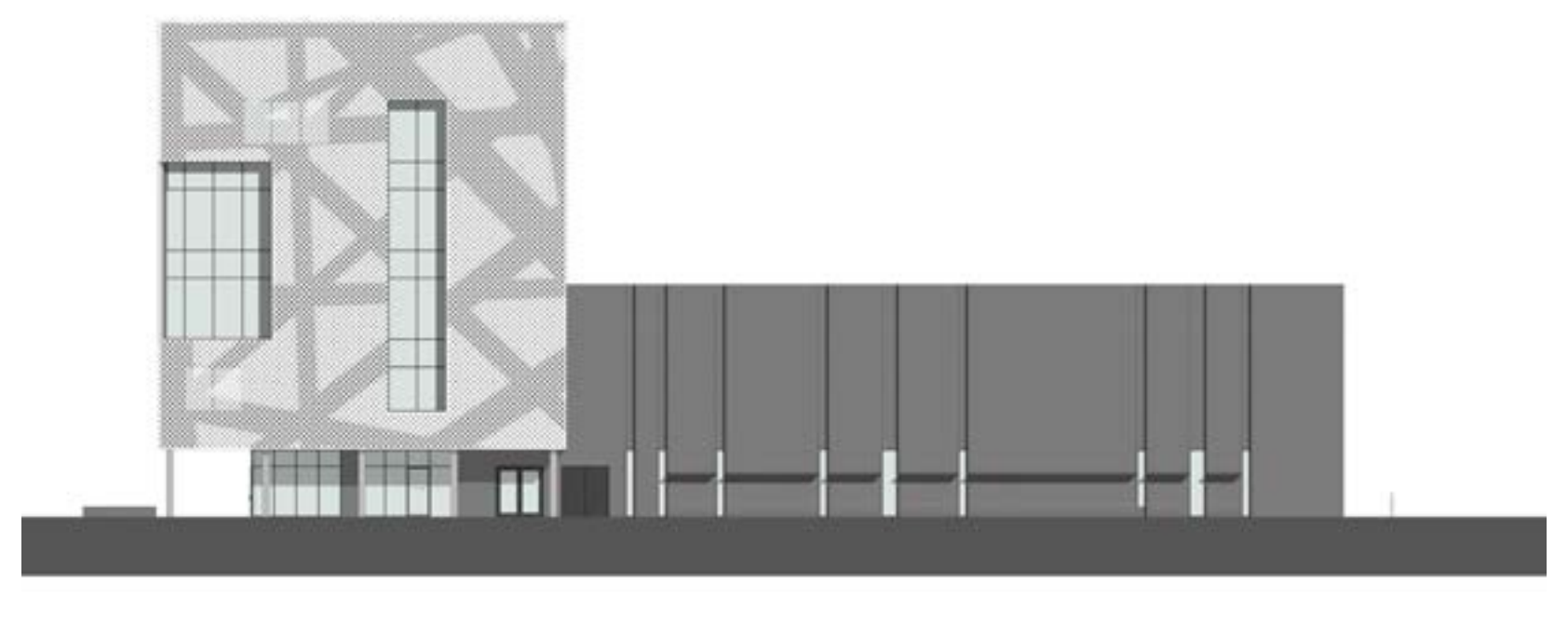
Building Function



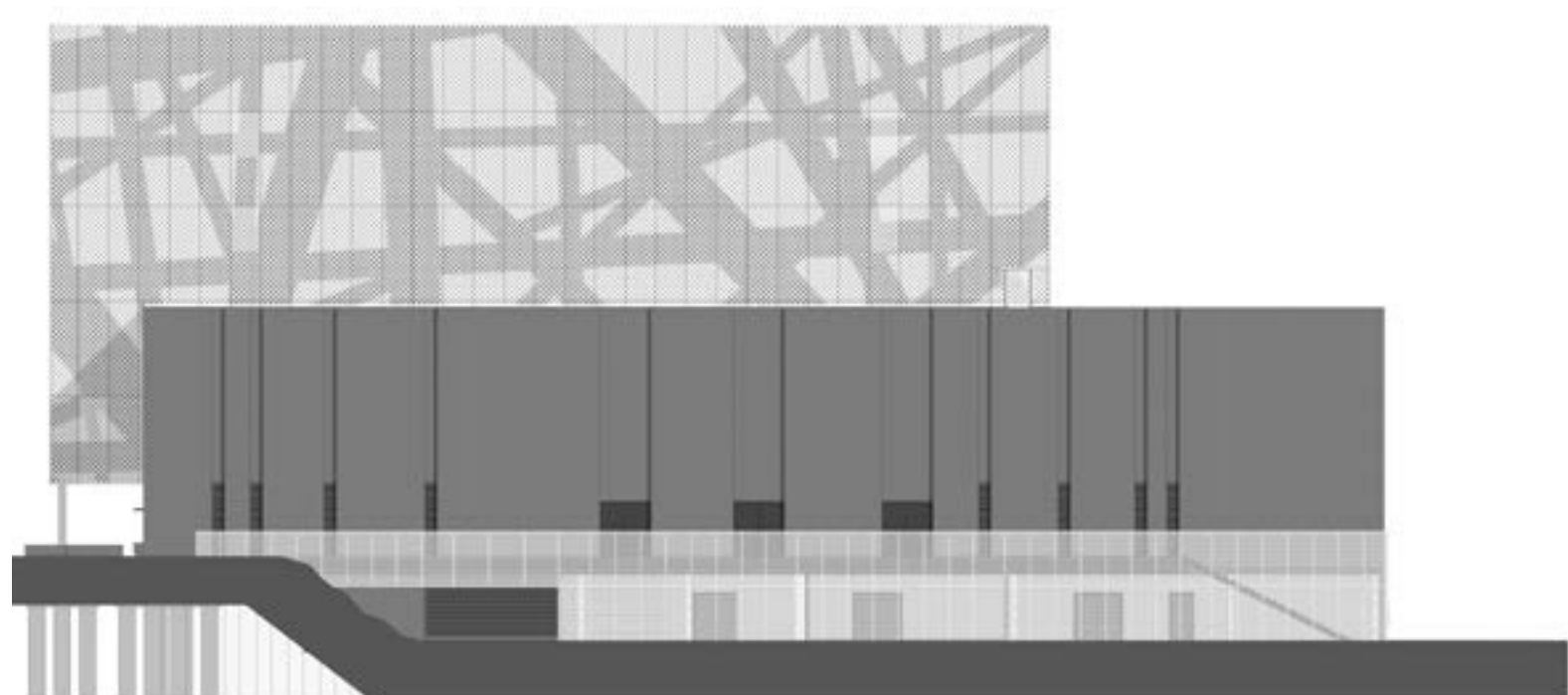
Southampton Solent University New Sports Building Elevation Design



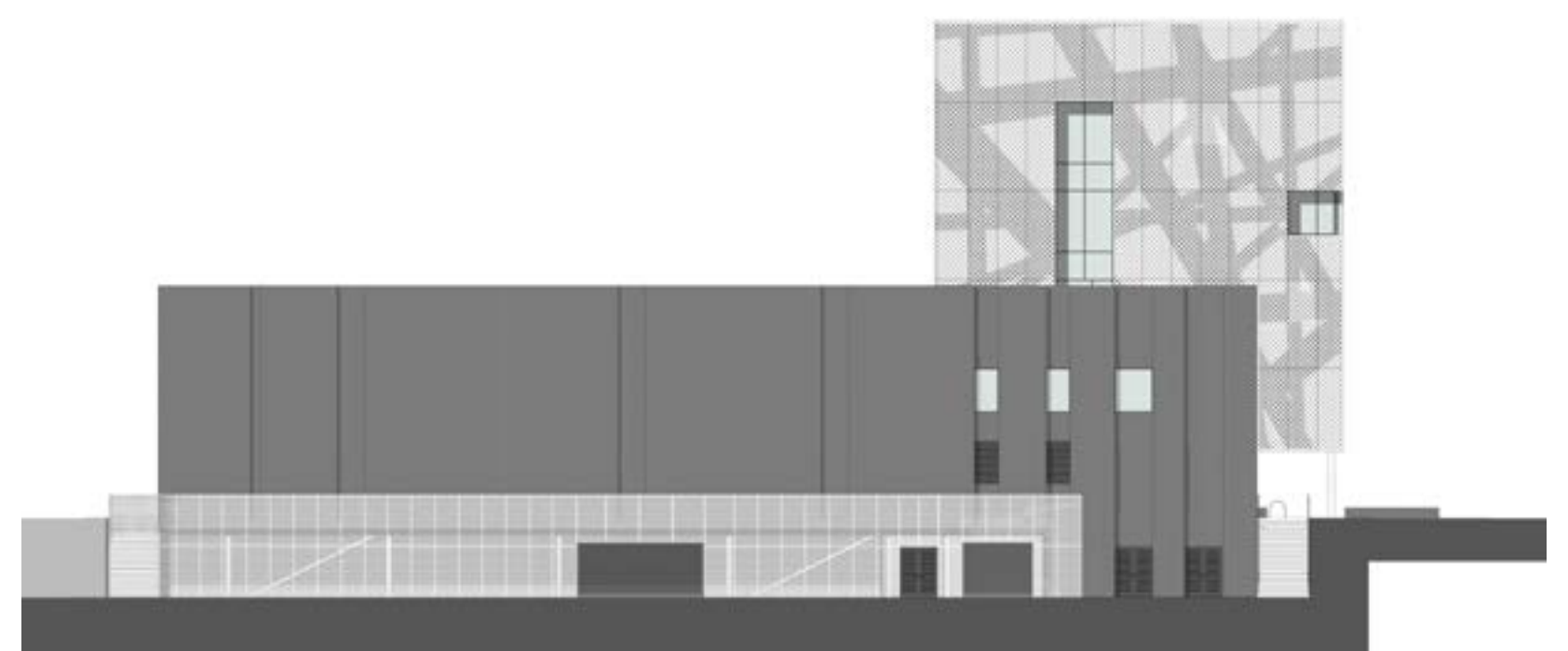
North Elevation - Charlotte Place



West Elevation - East Park Terrace



South Elevation - Spark



East Elevation - St Andrews Road

Graphic Design Development for Cladding

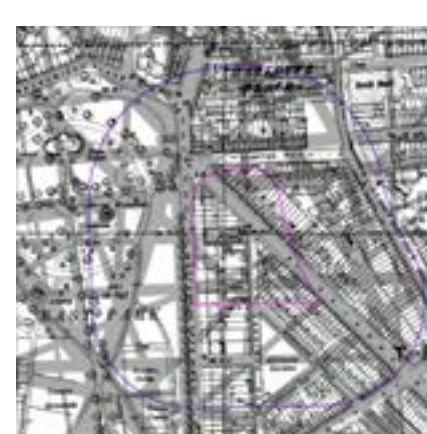
1. The context for the graphic is taken from the 1933 historic map



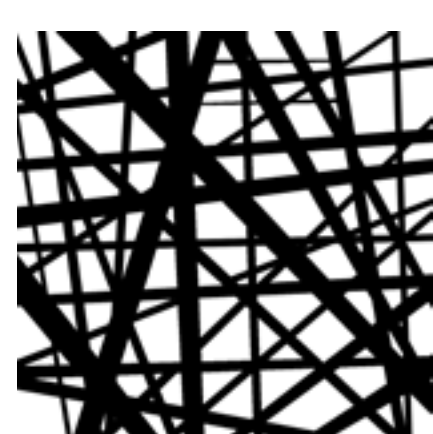
2. The graphic is created by selecting key routes across the site.



3. Using multiple axis creates the seemingly random pattern

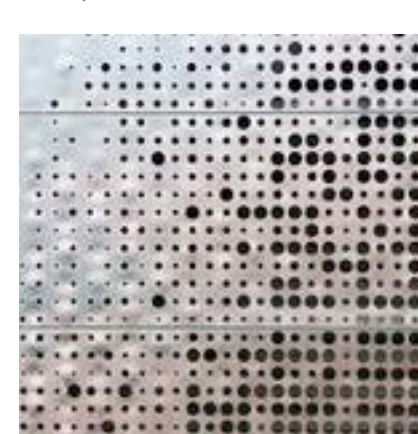


4. Background map removed to reveal pattern



Materials

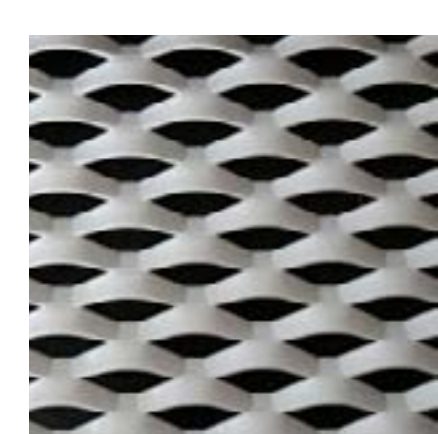
Perforated PPC Aluminium Rainscreen panel showing graphic map abstract



Blue / Black Brick with vertical recesses



Aluminium Expanded Mesh panel



Southampton Solent University New Sports Building

Next Steps



Thank You

Your feedback is important. Please either:

- Complete and return a feedback form in the box provided
- E-mail comments to consultation@solent.ac.uk
- Write to Sports Building Consultation, Southampton Solent University, Room A201, East Park Terrace, Southampton, SO14 0YN

The design team will consider the feedback provided and make any necessary refinements. It is anticipated an application for the proposed building will be submitted in January 2017, which will be subject to a 13 week determination period by Southampton City Council. Construction is expected to start in July 2017 with the building in use by January 2019.