



**Southampton
Solent
University**

CELEBRATING

20 YEARS

2005 – 2025

Celebrating 20 Years of Southampton Solent University

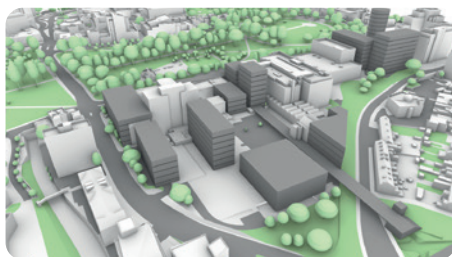
SOLENT.AC.UK



Celebrating 20 Years of Southampton Solent University

Thank you for taking an interest in the 20th anniversary celebration of Southampton Solent gaining university status. This milestone offers a moment not just to reflect on the last two decades, but to celebrate a journey that began much earlier – when our roots first took hold in the city back in 1856.

Solent has always been more than just a place of learning. Gaining university status in 2005 gave us renewed purpose as a civic institution, firmly embedding us in the heart of Southampton. Over the years, we've strengthened our ties with the community – from supporting local schools and youth initiatives to building a dynamic partnership with Southampton Football Club.



As we mark this anniversary, our eyes are also firmly set on the future. Our Vision 2035 outlines a bold and thoughtful path forward, ensuring we remain resilient and relevant in an evolving higher education landscape.

We invite you to join us in celebrating this special occasion – whether by reconnecting with old friends, exploring our latest innovations, or simply being part of a community that values creativity, opportunity, and change. Here's to our past, our present, and the exciting future ahead.



**Prof James Knowles,
Vice-Chancellor
Southampton Solent
University**

10 years supporting Southampton Football
Club Women's team



Official
University Partner

solent.ac.uk

Our journey

Solent University has a rich history that dates back to 1856 with the founding of a private School of Art. Over the years, we grew through several key mergers – first with the Southampton College of Technology and later with the College of Nautical Studies at Warsash.

These institutions came together in 1984 to form the Southampton Institute of Higher Education, one of the most significant steps ahead of achieving university status in 2005.

1856

A private school of art is founded in Portland Terrace, Southampton



Illustration of 'The Royal Victoria Spa and Assembly Rooms, Southampton' from Philip Brannon, Picture of Southampton (Rare Books Cope SOU 91.5)

1932

A public school of navigation is established, as part of Southampton University College (later the University of Southampton)

1943

The Ministry of Education opens a junior technical school, for building the trades that bomb-shattered Southampton would need in order to rebuild

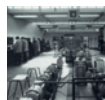
1946

The School of Navigation moves to Warsash



1951

Southampton College of Technology officially formed, bringing together the construction school and other technical disciplines



1994

Mountbatten Library (now Solent Library) and Sir James Matthews building open



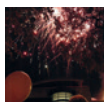
1998

The Michael Andrews building is opened by HRH The Princess Royal



2005

Southampton Institute becomes Southampton Solent University



2006

The University acquires its first Chancellor, Sir Alan West (now Lord West)

2011

Warsash Maritime School's new ship handling centre at Timsbury Lake is opened

New team sports facilities open at Test Park



1964

Construction of Southampton College of Technology's first building East Park Terrace

Renamed the R.J Mitchell building in 1992



1973

The historic College of Art, moves to new premises on East Park Terrace next to the College of Technology

Renamed The John Everett Building in 1996



1978

The College of Art and the College of Technology merge, forming Southampton College of Higher Education



1984

The School of Navigation at Warsash merges with Southampton College of Higher Education, renamed to Southampton Institute of Higher Education



1989

Southampton Institute is established as an independent higher education corporation

A period of rapid expansion in courses, campus facilities and student numbers begins

2015

Solent wins Times Higher Education's most improved student experience award

2016

The Spark building is opened on East Park Terrace campus



2019

The Sports Complex is opened

The Warsash Maritime School simulation centre is opened



2023

The University achieves three gold ratings in the Teaching Excellence Framework

Only a small group of universities gained the 'triple Gold'



2025

Staff AI programme is launched, with endorsement from IBM.

Celebrating 20 years of university status





Past

The university's main campus at East Park Terrace was established in the heart of Southampton in the 1960s and remains a central hub for learning, innovation, and student life.

Since being granted university status, we have seen major investments and achievements. The Spark, a state-of-the-art teaching and conference facility, opened in 2016 and quickly became a landmark building. Solent's advanced sports facilities have attracted elite athletes from around the world, enhancing its reputation in sports science and education.

Our links with Southampton and the local area have always been strong but they have grown even further since we became a university, emphasised by the launch of our first civic charter in 2021. We have developed relationships with local schools and colleges which help to give young people a taste of university, as well as growing partnerships with local businesses – benefiting students in a multitude of ways.

To top it off, the university achieved TEF Gold in 2023, a prestigious recognition of its high-quality teaching, learning environment, and student outcomes.



Present

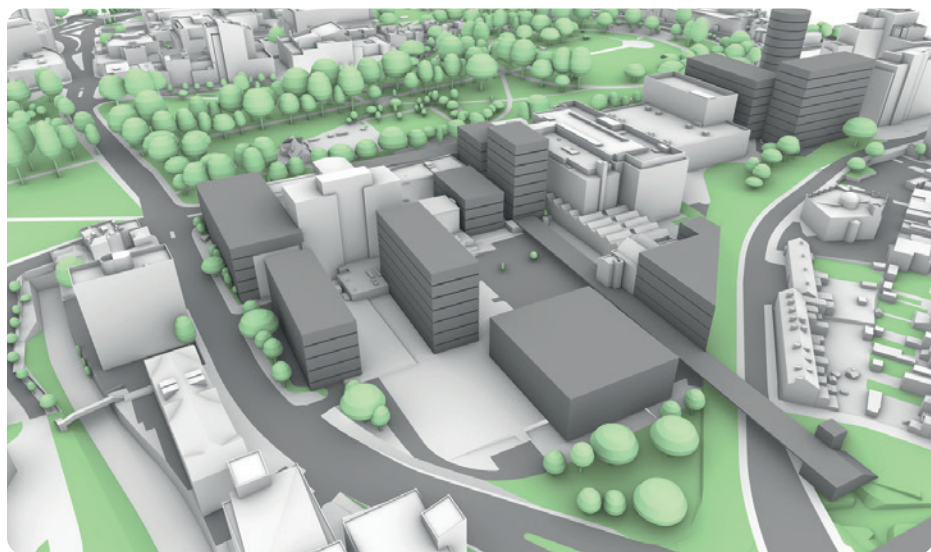
Solent University is a key part of Southampton's vibrant community, welcoming students from over 100 countries and playing a vital role in shaping the next generation of work-ready graduates. Our diverse student body and strong global outlook make Solent a dynamic and inclusive place to study.

We are proud to embrace modern, practice-led learning that prepares students to thrive from day one in their chosen careers. Our state-of-the-art facilities reflect real-world environments, giving students the practical experience they need to succeed. Learning is supported by award-winning academics who bring industry insight and hands-on expertise to every course.

Locally, we are deeply connected with schools and colleges across the Southern region, offering young people a glimpse into university life and creating clear pathways to higher education. We are committed to ensuring that local talent is nurtured and given every opportunity to flourish.

Solent also enjoys strong partnerships with major organisations such as Chartered Association of Business Schools and Hampshire County Cricket Club. These collaborations provide unique experiences, networking opportunities, and professional development for our students, helping them build valuable industry connections while they study. At Solent University, we are proud to combine local engagement with global ambition.





Future

At Southampton Solent University, our vision for the future is bold and ambitious. By 2035, we aim to become the UK's leading practice-led university – an open, collaborative, and globally connected institution that transforms lives through education, innovation, and partnership.

Rooted in our region and inspired by the wider world, we will evolve into a multiversity, offering flexible and inclusive education to learners at every stage of life. Our campuses – physical and digital – will welcome a diverse community, promoting social mobility, lifelong learning, and access to excellence.

Driven by real-world challenges, our research will focus on impact and innovation, acting as a catalyst for progress. Through collaboration



with industry, communities, and global partners, we will co-create solutions that address urgent societal needs and fuel future prosperity.

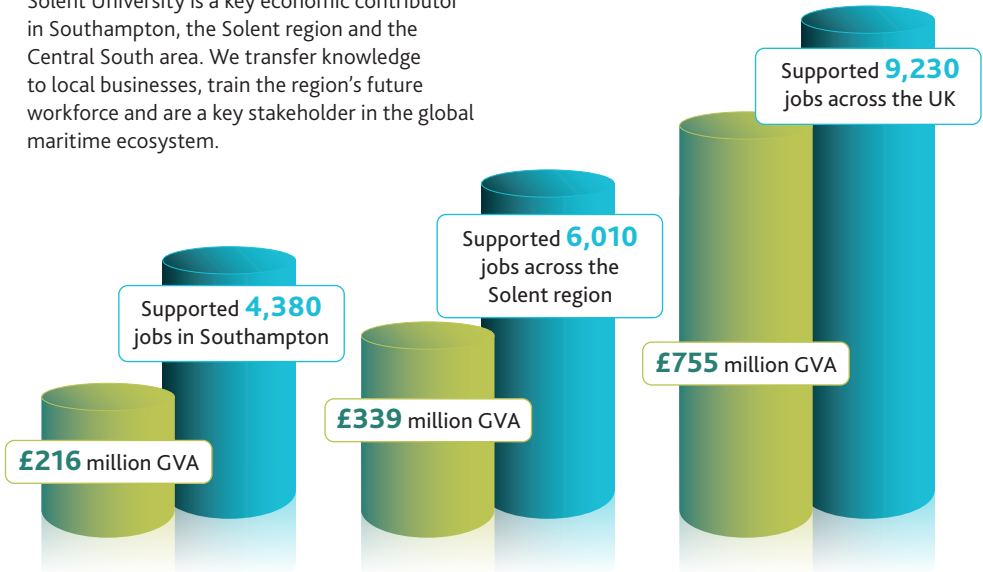
Our global outlook will enrich both our students and our region. We will embed international perspectives across all areas of learning, strengthen cross-border partnerships, and expand our influence through knowledge exchange.

By uniting these ambitions with our core values and practice-based heritage, Southampton Solent University will empower students, support communities, and help shape a more resilient, connected, and inclusive future.

Key information

Economic (2022/23 Academic year)

Solent University is a key economic contributor in Southampton, the Solent region and the Central South area. We transfer knowledge to local businesses, train the region's future workforce and are a key stakeholder in the global maritime ecosystem.



South Coast IoT:

The state-of-the-art £13m Institute of Technology aims to meet the Solent region's future workforce needs across maritime, engineering and digital technologies - connecting learners across the educational partners through innovative learning opportunities and an employer-led curriculum.



We have over **100,000** alumni throughout the world.



We offer **186** degree courses at undergraduate and postgraduate level



Strategy 2035

Our 2035 vision sets out how we're going to approach the next ten years, setting ourselves on the path to be the best practice-led university in the country by 2035.

We will begin by blurring the lines between classroom and workplace, making learning both experiential and experimental. University is about more than acquiring skills – it's about understanding their relevance and using them to create new ideas and solutions. This hands-on model fosters critical thinking, creativity, and lifelong learning, preparing students to thrive in the fast-changing world we're a part of.

Our plans for research share the same ethos. Practice-led and impact-focused, we will explore real-world problems and deliver meaningful, measurable benefits to individuals, organisations, and society. By embedding impact into everything we do, we will ensure that our work drives positive change now and for the future.

Industry engagement is central to our vision. Students tackle live projects, access mentorship from professionals – including our own alumni – and work with cutting-edge technologies. This deep industry integration ensures our curriculum remains relevant and produces highly employable graduates with the agility to lead in evolving industries.

As you can tell, we are also future-led, embracing new technologies to shape the next generation of learning. Whether it's virtual production in film or AI-powered navigation in maritime, we equip our students to imagine, design, and power the future. Through collaboration, innovation, and a spirit of curiosity, Southampton Solent University is defining education for a new era.

What's on?

Join us to celebrate Solent's journey and future

We're marking an exciting chapter in Southampton Solent University's story – and you're invited to be part of it.

Celebrate with us

There will be a number of events in 2025/26 to celebrate our 20 year anniversary and ensure Solent University continues to make a positive impact for the region. These will include guest lectures, exhibitions and opportunities for communities to engage with University leadership, industry leaders and fellow supporters to help shape our next 20 years. For information on these events **visit: solent.ac.uk/20-years**

Working with Solent

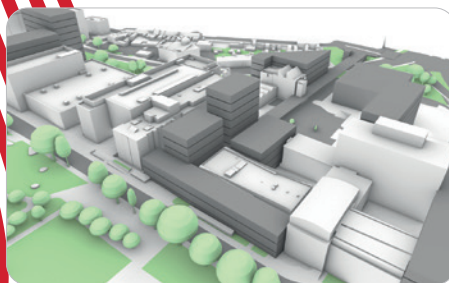
If you would like to collaborate with us, achieving growth together then check out ways to do so.

Visit: **www.solent.ac.uk/work-with-us**

Estates exhibition – 30 June to 18 July 2025

Explore Solent Campuses: Past, Present, Future, a unique exhibition showcasing the transformation of our East Park Terrace campus over the past 60 years. Discover the milestones that have defined us, and get an exclusive look at our exciting plans for the years ahead.

Whether you're an alum, partner, friend of the University, or simply curious about our future, we'd love to welcome you.



MAKE WAVES



We'd love to hear from you if you'd like to be part of our celebrations, or if you'd like to speak to us about future partnership opportunities.

Please contact our Senior Communities Development Manager,
Mike Toy, via email: engagement@solent.ac.uk

