



ROSEWOOD HOMES

Senior Living



White Render



Mid Grey Stone Venner

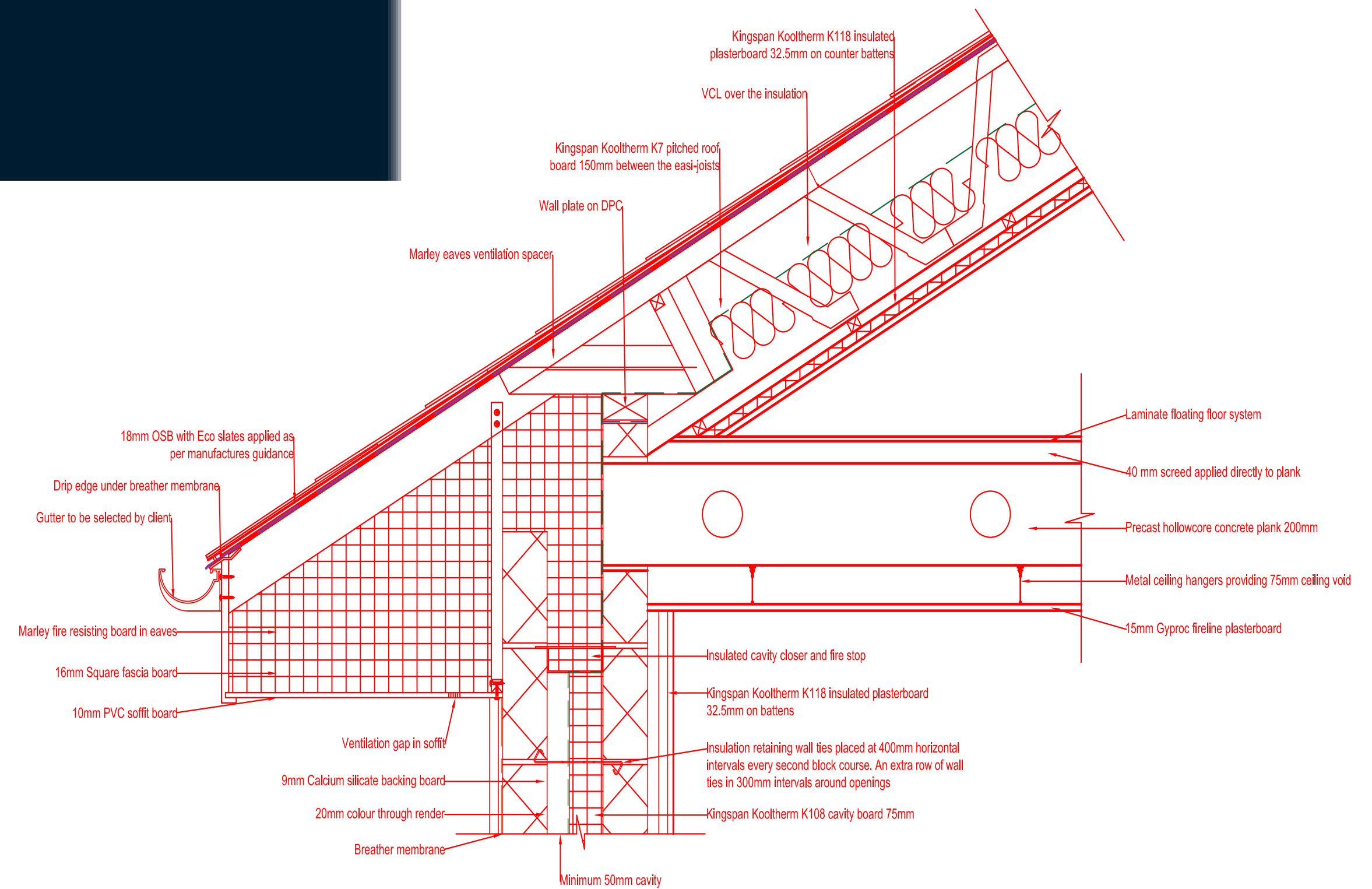


Dark grey Eco slate roofing.

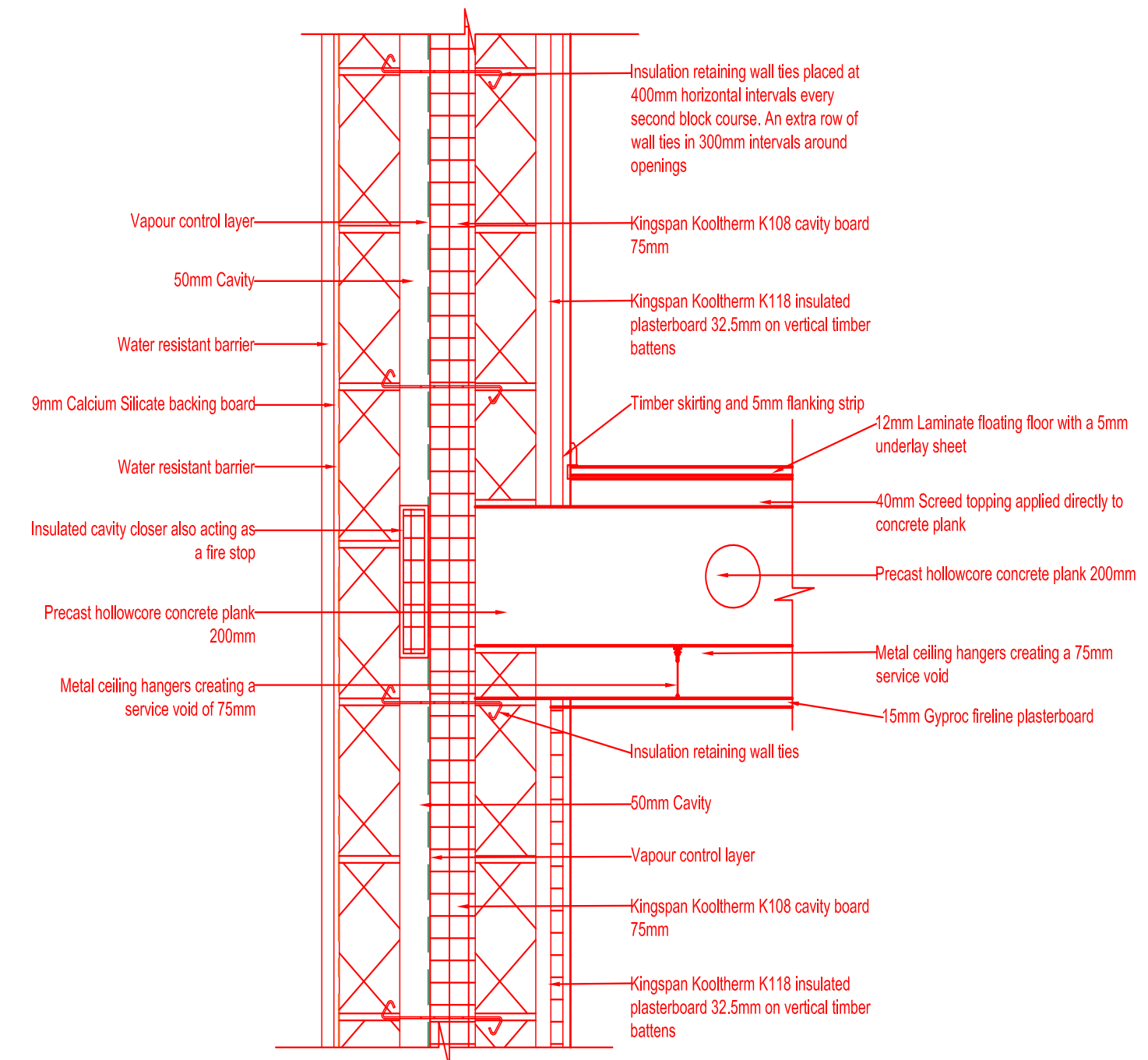
The first material proposed for the external finish is a white colour through render to contrast the grey tones and create a brighter appearance to the buildings.

The cladding chosen is produced by Century Stone under the Etenna range. The 'Daisy' colour chosen is predominantly light grey with flecks of darker greys and gold stone running through. This cladding creates the natural connection desired for this project as well as a modern and luxury feel. This will help create a high quality, homely environment for the residents of Rosewood Homes

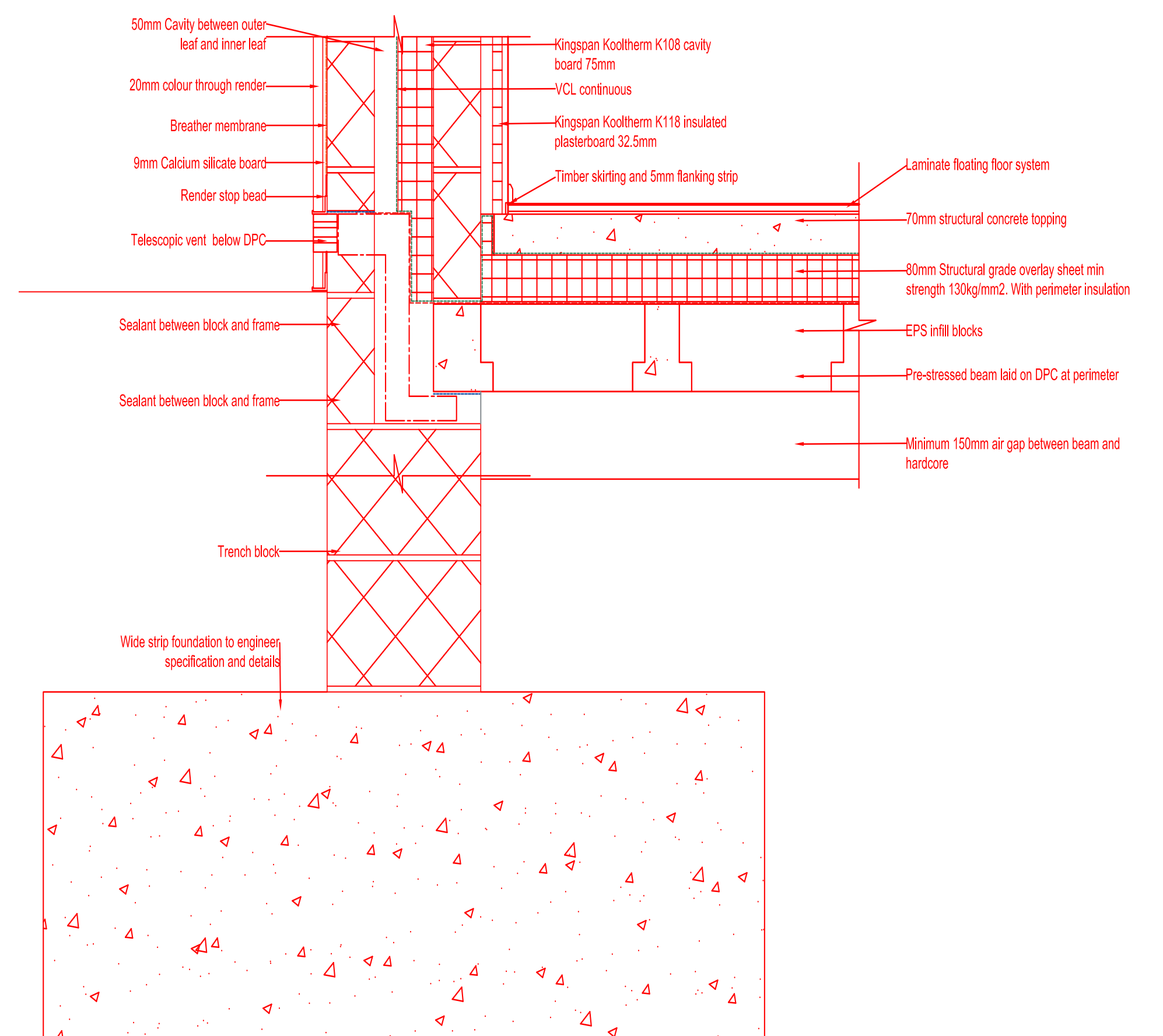
The roofing material proposed for this development is Eco Slates panels. Eco Slates are made from 95% recycled plastic and are similar in appearance to natural slate tiles. The slates can be used on range of roof pitches and fully recyclable at the end of life.



Detail 6- Wall to Roof
Detail
1:10



Detail 7- Wall to Separating Floor
Detail 1:10



Detail 2- Ground Floor to Wall Detail
1:10



Garden View



Apartment Block Car Park View