

Fig.

A MAGIK LENS PRODUCTIONS FILM





Fig.

A MAGIK LENS PRODUCTIONS FILM

FIG - By Imogen Smith

Logline

Hidden truths, concealed centers and figments of imagination.

Synopsis

Fig is a young woman with distrust in her heart. She has doubts about her new relationship with Emma. A bizarre dream takes Fig on a journey through her subconscious thoughts and leads her to take a leap and trust Emma. But was that the right decision?

Contact:

Imogen Smith

Imysmith24@gmail.com

07967535673

Instagram: [@magiklens.prod](https://www.instagram.com/magiklens.prod)

www.magiklensproductions.co.uk

Trailer: <https://youtu.be/Equ7jK4szXs>



Imogen Smith

Director, Producer and Cinematographer

Imogen has a BA in Media Production from Solent University. She began studying at Solent on a Media Production Foundation degree and intended to follow on with a degree in Film Production. However, before finishing the foundation year she switched to the Media Production pathway as she loved the multi-media aspects of the course. Imogen's love for film was not forgotten and can be seen through her Final Major Project for her degree - FIG.

Artist Statement

Fig is a surrealist short film about relationships and trust.

With this short film I wanted to explore the way we dream and how dreams can help us resolve turmoil in our subconscious.

Through research into dreams and experiencing my own, I developed this film to feel as surreal and realistic as possible.

Crew



Assistant Director -

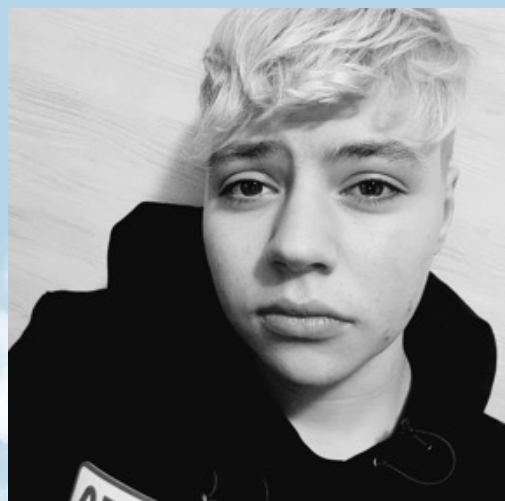
Yazmine Chappell

Third year Media Production
student at Solent University.

Sound and Production
Assistant -

Caylen Dutton

Third year TV and Media
Production student at Solent
University.



Cast & Characters

Fig - Jaydah Monroe

Fig is a 23 year old woman with bouncy curly hair, brown eyes and full lips. She works in a café and enjoys life. But Fig struggles to trust people close to her due to a past relationship and is often anxious and paranoid about being hurt again.



Emma - Tove Falk

Emma is 24, with long dark and straight hair and a bright smile. She is fun and relaxed and doesn't take life too seriously. After Emma's parents got divorced when she was young, she lost faith in relationships and doesn't see trust or commitment in relationships as important.

Locations

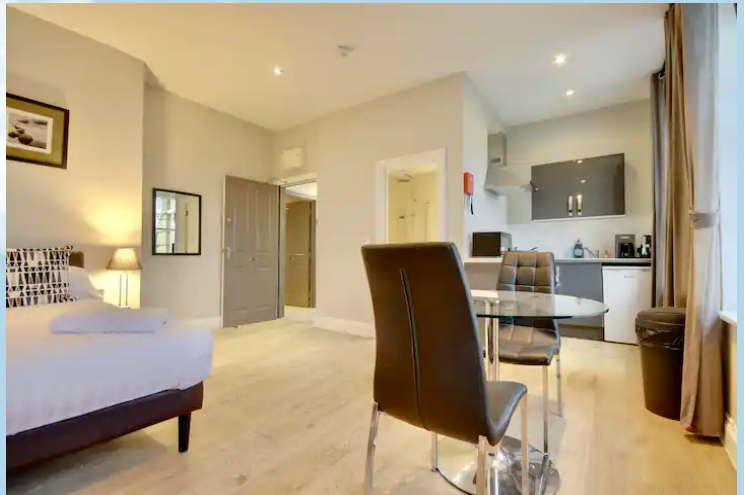


One:

The first location needed for Fig is Fig's work place. A Large amount of the film is set in this workplace, mostly at night/evening.

For this I envision a café. Above are pictures of a The Mercintile Flea in Southampton that has the right look for the film.

Locations



Two:

For this location I need a flat or house for Fig to live in. This will be the second most seen location in the film, because of this it needs to be a nice presentable location.

I needed this location to be fairly small to represent Fig's closed off lifestyle.

I found this hotel room that includes a kitchen in The Mansion, a hotel just outside of Southampton.

Locations



Three:

The final location needed will be a street at night. This is for Fig to walk home on.

Realistically any street will do but I would like it to be aesthetically pleasing on camera. As well as this, it would be beneficial for this location to be nearby to the café for logistic reasons on the day of filming. Above is an example of a few locations that I am thinking of.

