

Itchen Prospects: Education Centre for Disabled People & Adults

*ALL PEOPLE HAVE A
RIGHT TO EDUCATION*

The motivation behind designing the 'Itchen Prospects; Education Centre for Adults and Disabled People' is to provide a safe, exciting and stimulating environment for people to excel where they may not have been able to in the past.

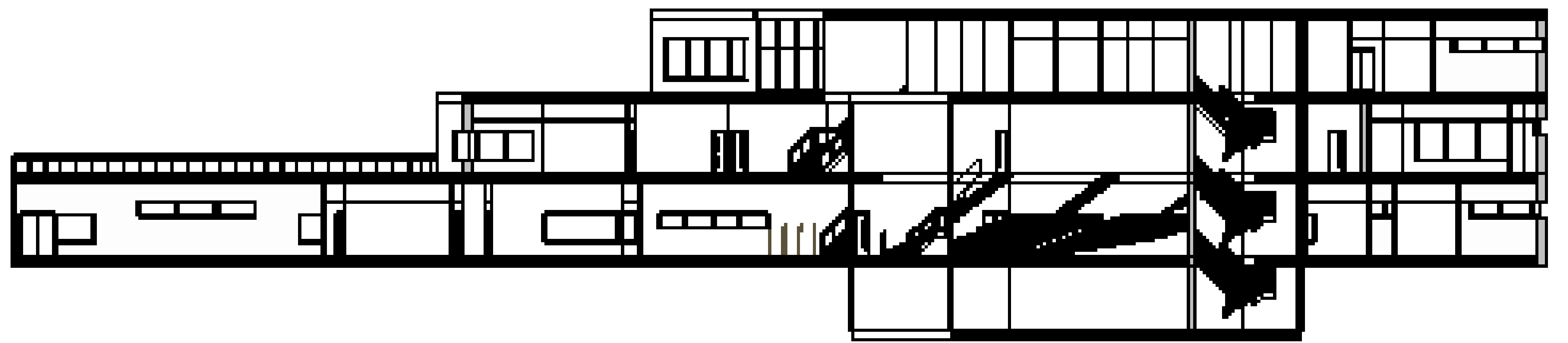
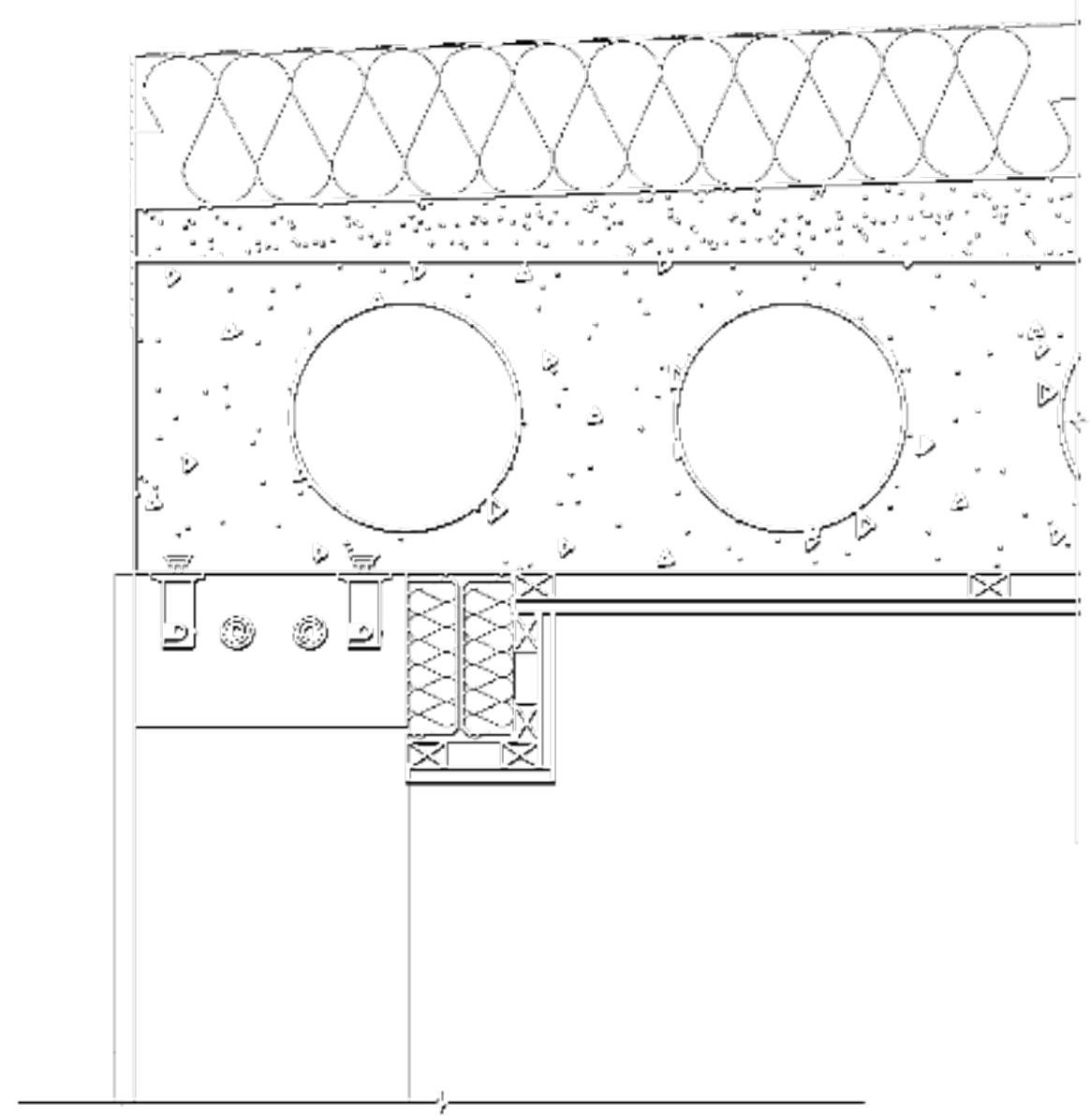


Goals for 'Itchen Prospects':

- Safe space for all people
- Accessible (elderly, wheelchairs, etc)
- Open spaces for circulation and inspiration
- Range of facilities for different types of learning
- Spacious rooms with personal feeling
- Outdoor and indoor facilities

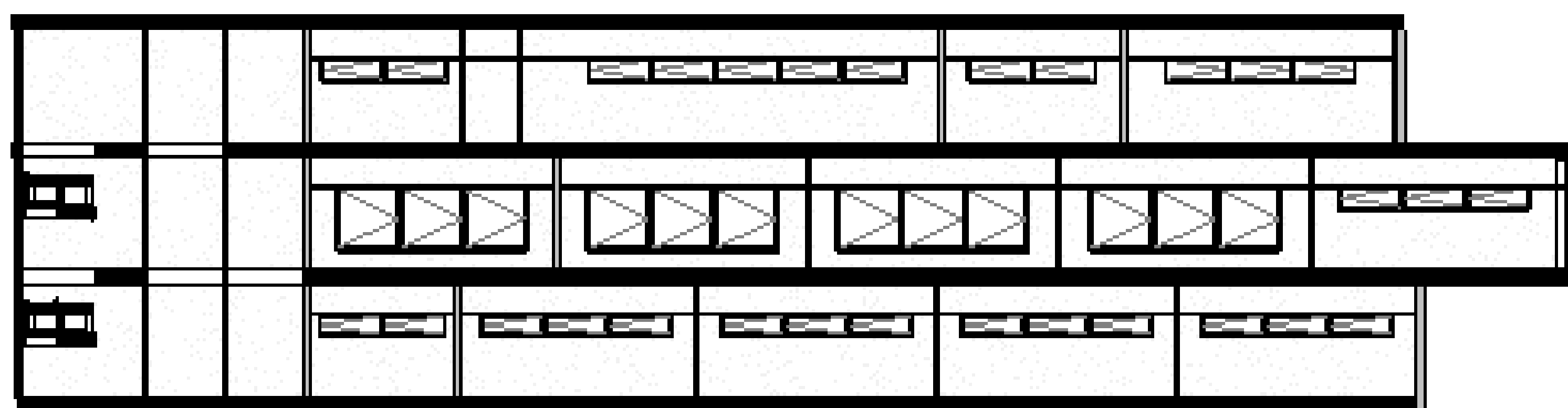
'Itchen Prospects' will be designed to be inclusive and accessible. It will provide facilities for those with disabilities and be flexible for people with children and busy lives; education is for everyone. The new environment will counter everyday restrictions (work life, parenthood, disabilities, etc.) and encourage all people to start/continue their learning.





Section 1 - seen above; shows section through entire length of building (from North to South), including: stairs, lecture theatre, library and café.

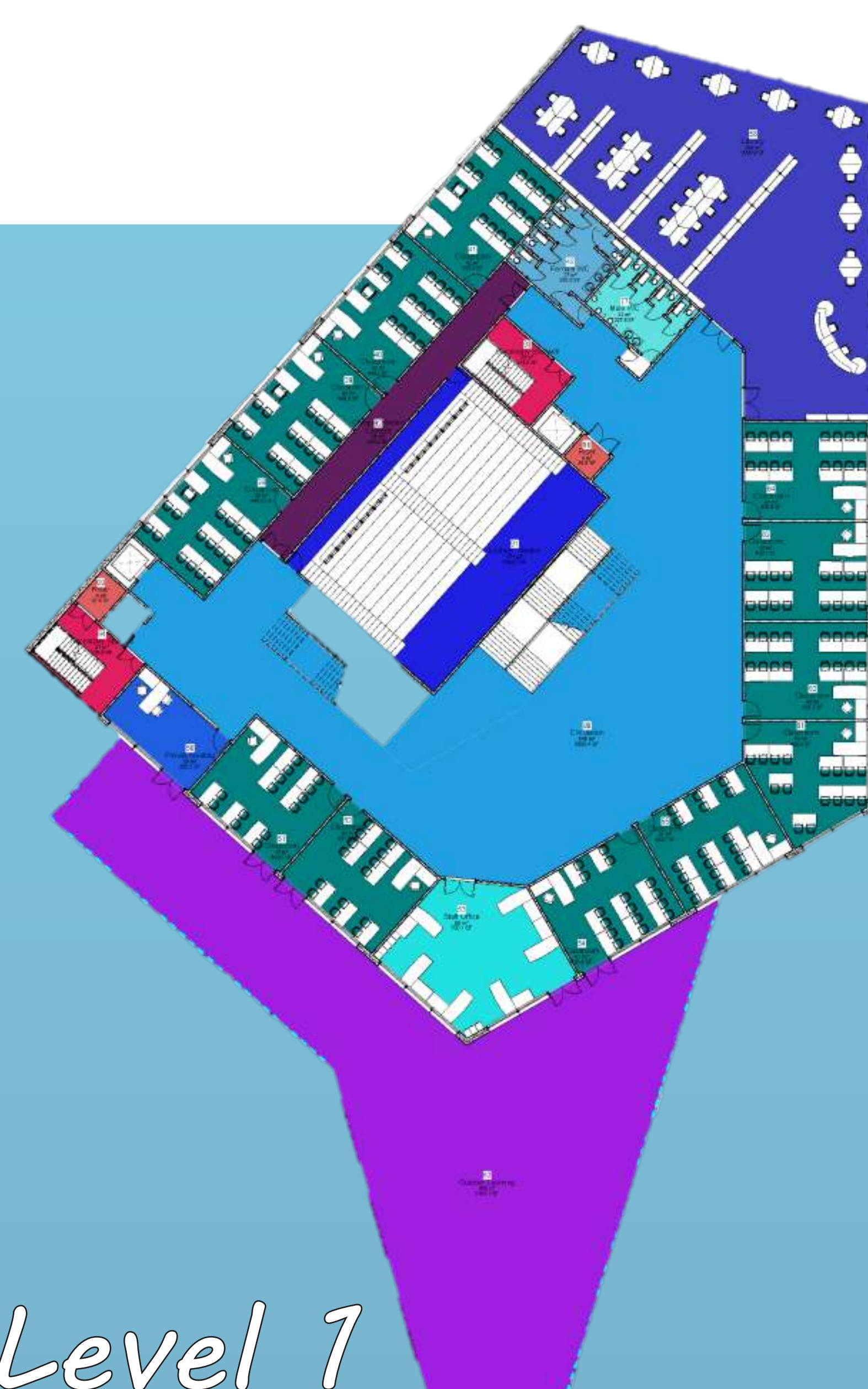
Section 2 - seen left; shows North-West facing section of building, including: stairs, conference rooms, classrooms, library and gym.



The images to the right show the floor plans for 'Itchen Prospects', featuring rooms such as a lecture theatre, library, café, gym, etc.



Level 0



Level 1

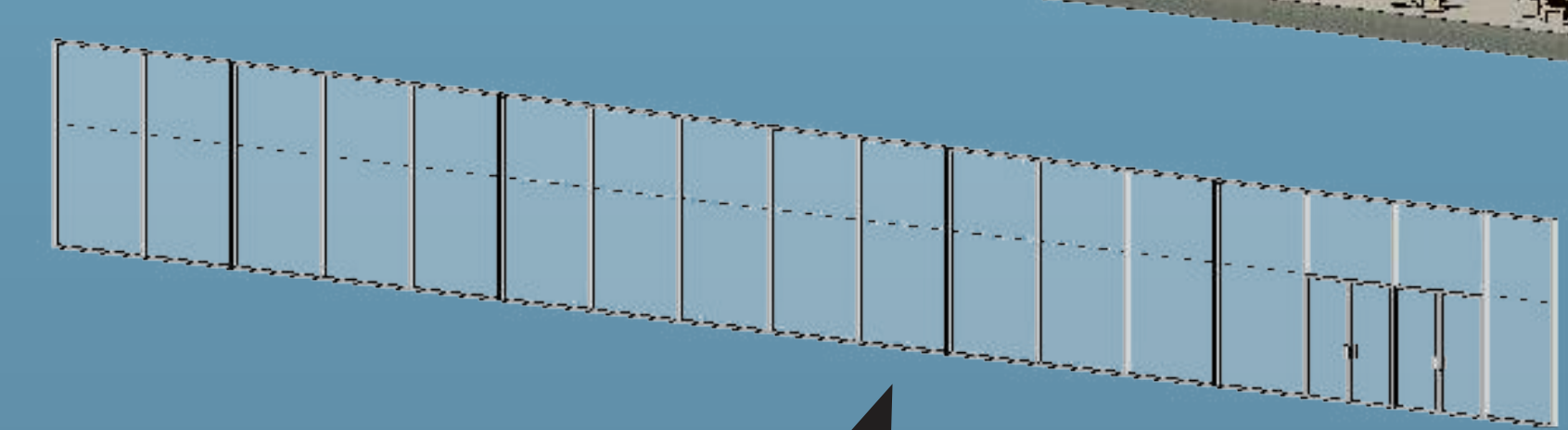


Level 2

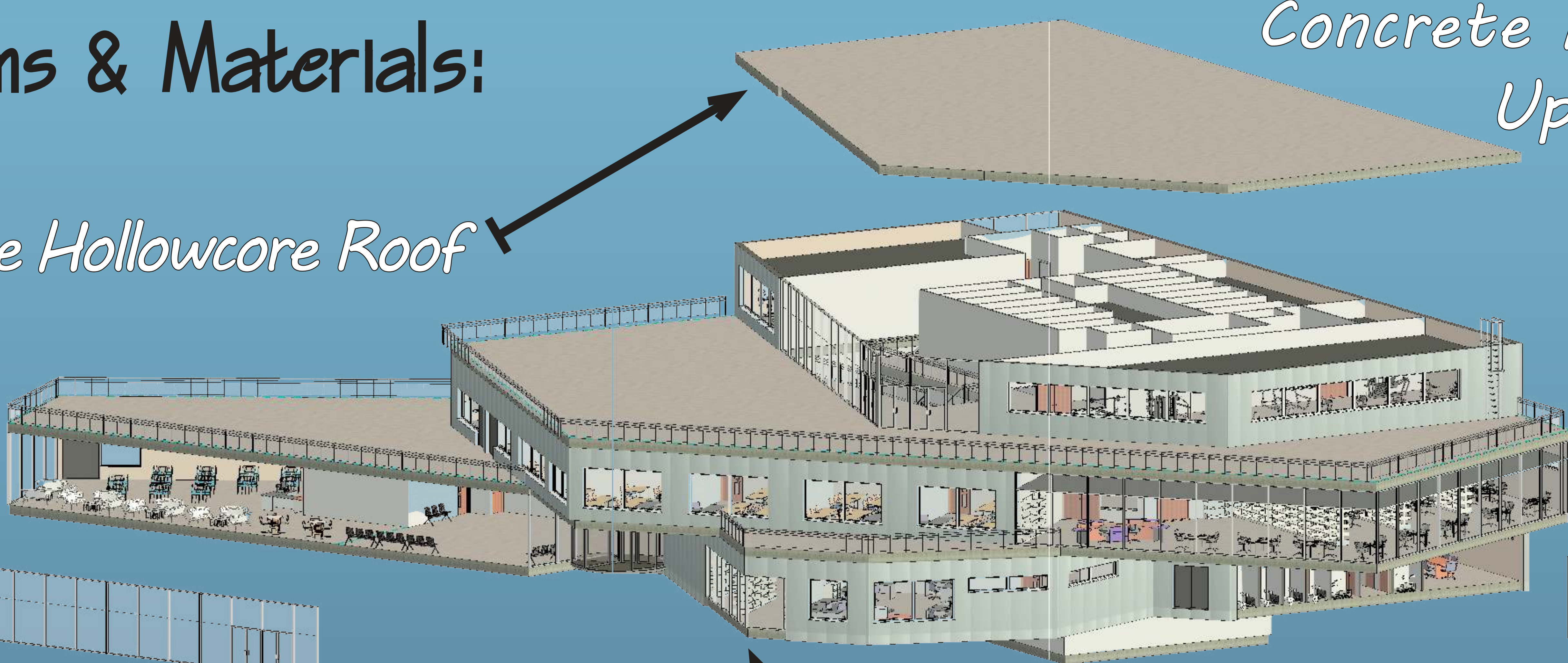
Systems & Materials:

Concrete Hollowcore Roof

Concrete Hollowcore Upper Floors



Structural Glazing



Beam & Block Floor

Rainscreen Cladding



Itchen Prospects

Jack Dudley