



# ODD Foundry

**Odd Foundry aims to create tools to aid novice type designers in taking their initial steps in designing typefaces.**

As part of the final project a new identity was devised for the ODD Foundry brand. This included a bespoke logo, colour scheme and type hierarchy as seen on the related website.

The project can be accessed from [oddfoundry.com](http://oddfoundry.com)

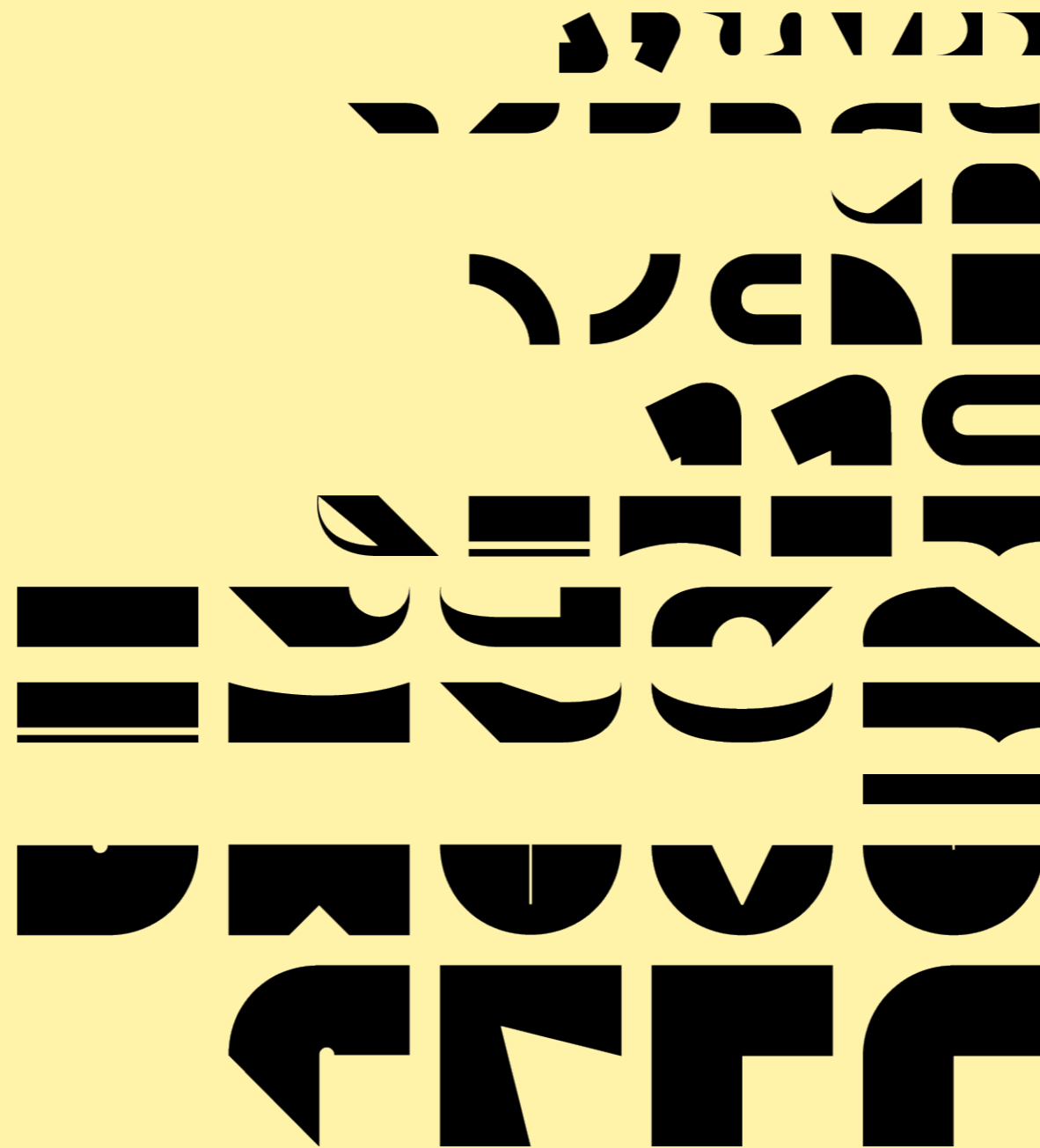




## Letterforms

The tools provided on the site make use of a collection of components inspired and influenced by the recurring forms present within letters and the stylistic components of typefaces. By combining these components in different manners the user is able to quickly generate and prototype initial letterforms that may act as inspiration for the development of further typefaces.

The components widths and lengths are proportionally related, alongside this various elements of each are designed to intersect and connect at common points. You will find they align together in unexpected ways, often with their own quirks and oddities to encourage creative problem solving.



c a t Q h o  
b e n s w

c a t Q h o  
b e n s w

c a t Q h o  
b e n s w

c a t Q h o  
b e n s w

c a t Q h o  
b e n s w

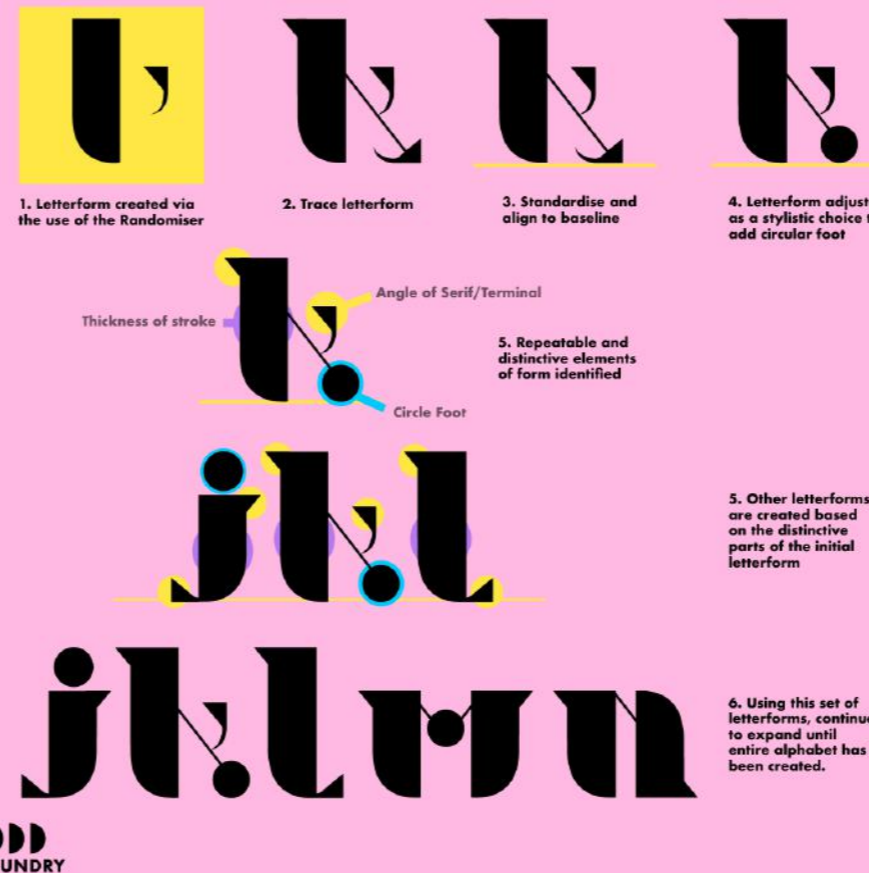
c a t Q h o  
b e n s w



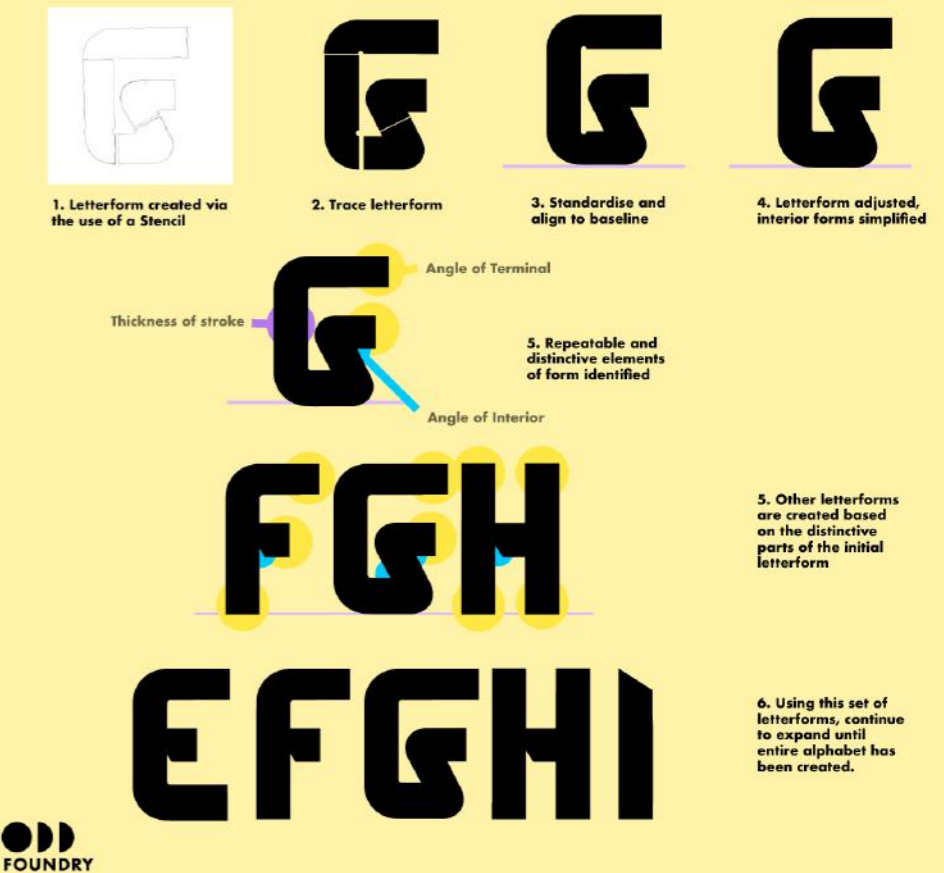
# Examples Of Tools In Use

With the finalising and production of the various tools taking place at the end of the project, testing of the tools was undertaken by the author (himself a passionate novice in the creation of letterforms) via 4 sessions that each focused on using one of the tools to create a selection of forms. These forms could then each be used as the basis for developing a new typeface.

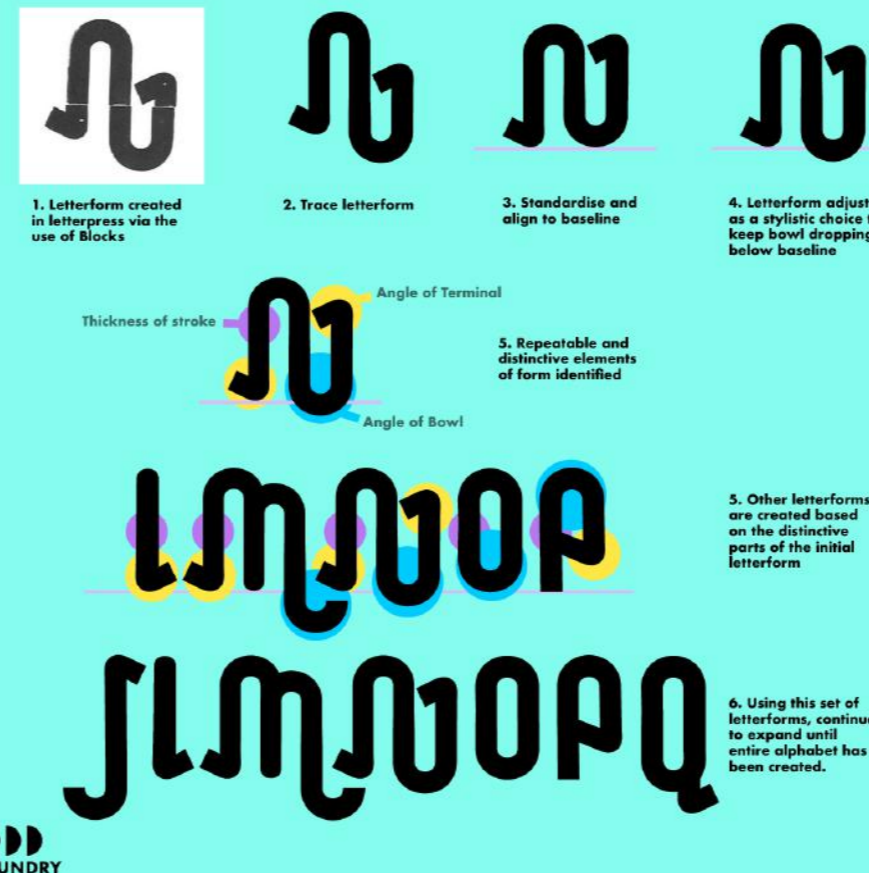
## Creating An Alphabet From A Letterform



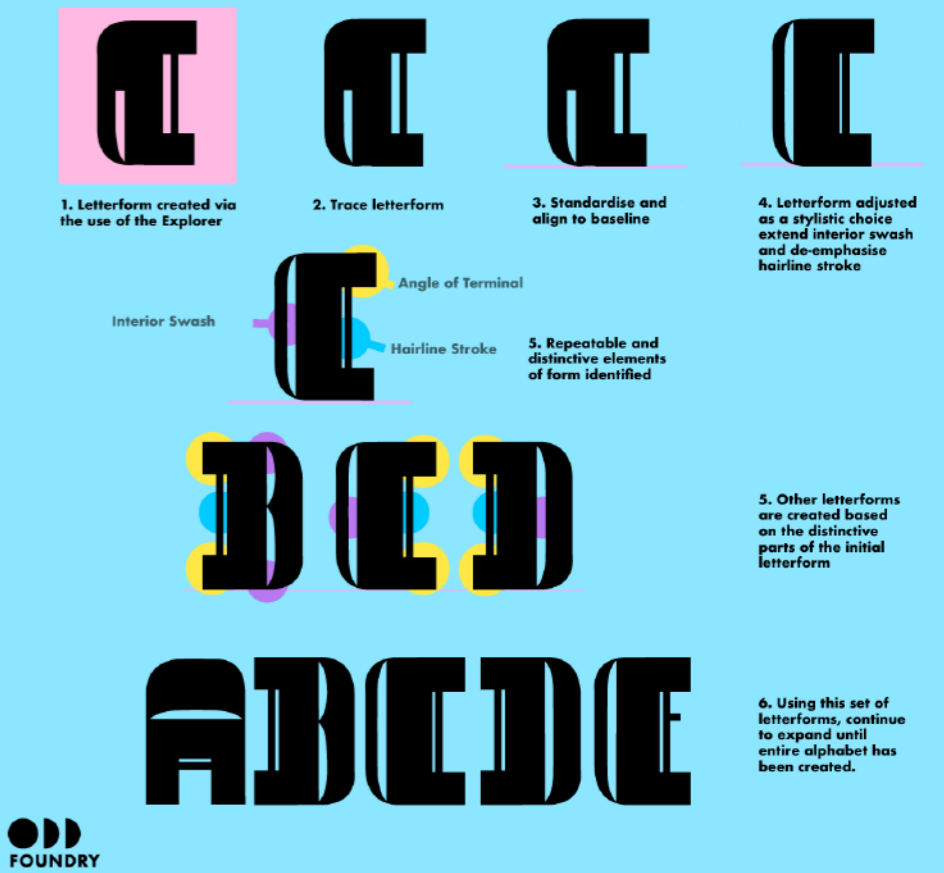
## Creating An Alphabet From A Letterform



## Creating An Alphabet From A Letterform



## Creating An Alphabet From A Letterform



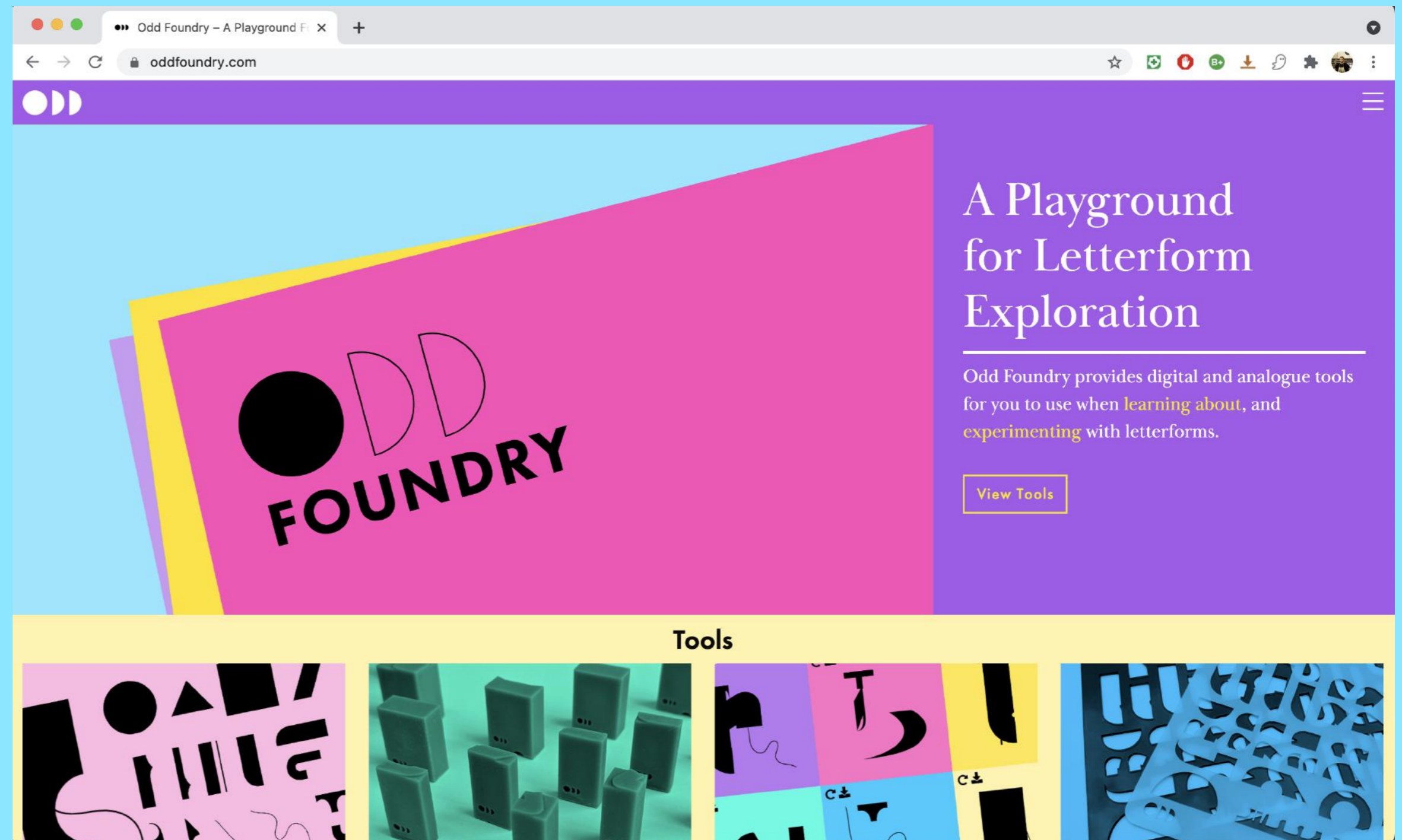


# Home Page

The Tools are hosted on the ODD Foundry website, with the digital tools being able to be accessed immediately via the browser and the physical tools being available for pre-order with shipping starting after the project submission.

The home page is designed to introduce the users to the concepts of how to interact with the digital tools. When they move their cursor over the incomplete ODD Foundry logo the cursor becomes a D and by clicking they are able to “stamp” a D on the canvas.

The various tools are linked below, as well as further pages being linked from the menu in the top right.

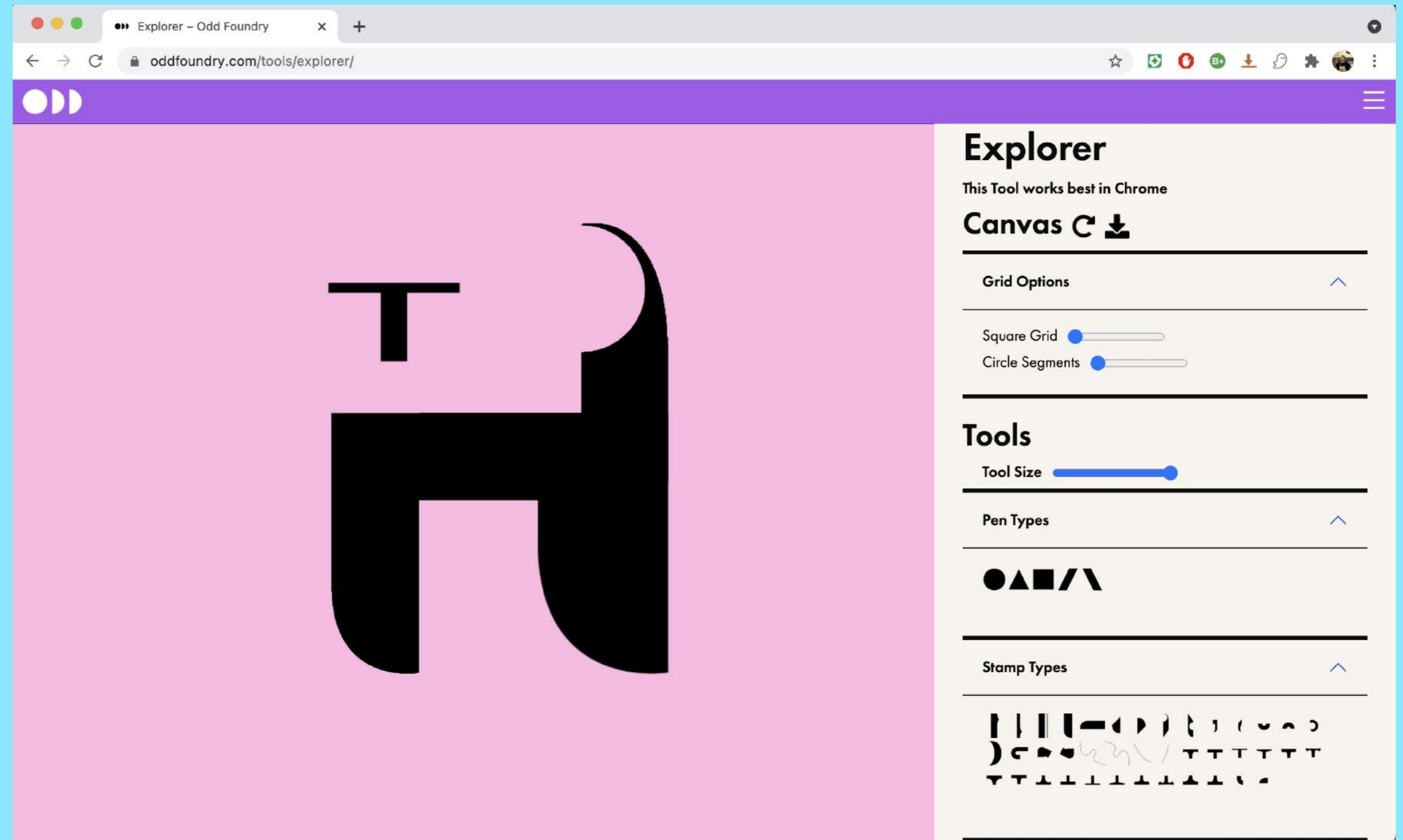




# Explorer Tool

The Explorer presents the user with a canvas of a few starting shapes, alongside this there are various drawing tools and grid options to enable the user to explore the act of mark making. The user has the option of drawing with pens of various shapes inspired by historical tools for letter creation, or they may stamp a selection of components onto the canvas. The canvas can be reset to start again or downloaded and then worked on in the users program of choice.

**This tool works best in Chrome on a desktop, though it has some mobile functionality.**

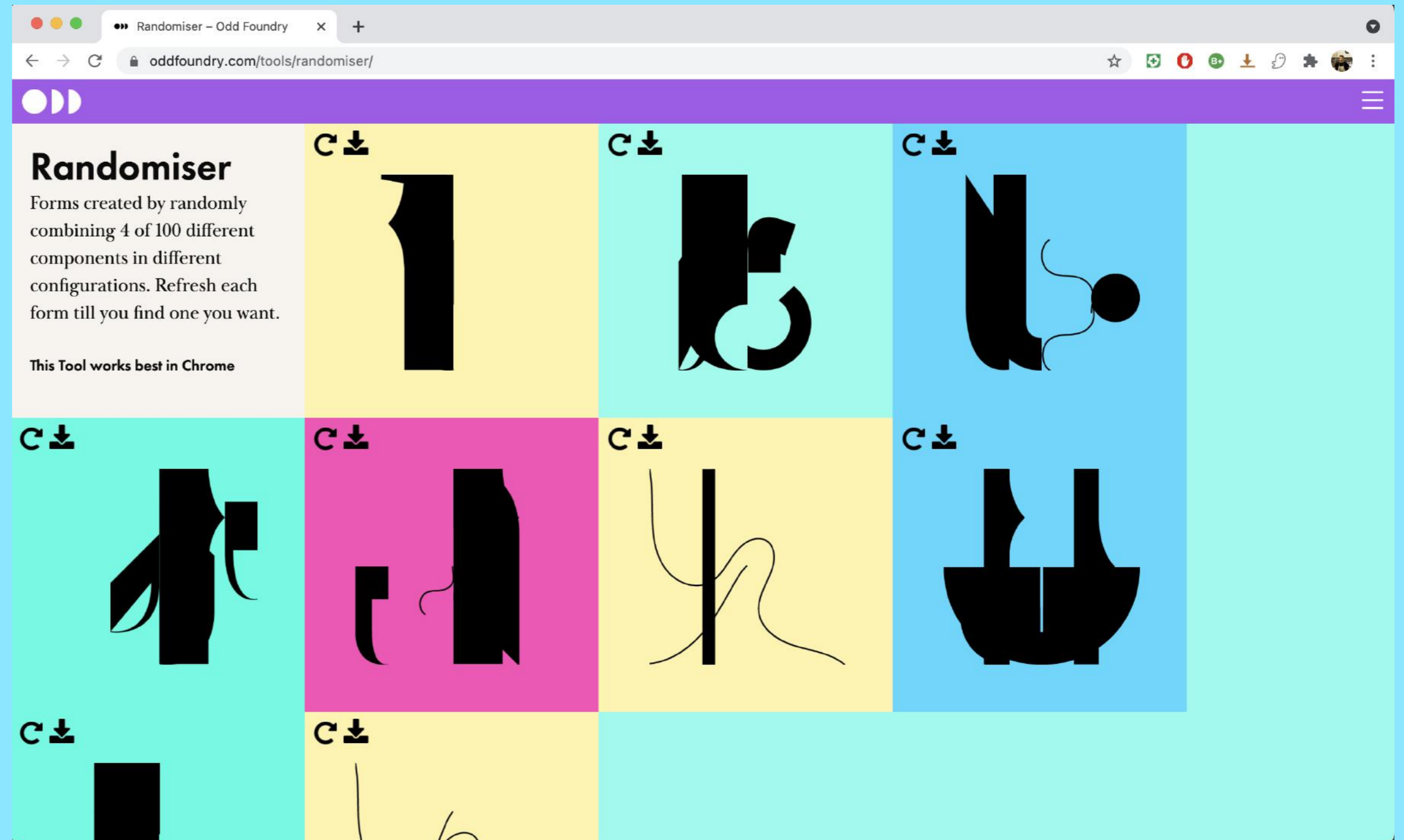




# Randomiser Tool

The Randomiser presents the user with a selection of forms created by randomly combining 4 different components in different orientations. The user can refresh each form until they find a letterform they perceive to be suitable for development further. The chosen form can be downloaded and then worked on in the users program of choice.

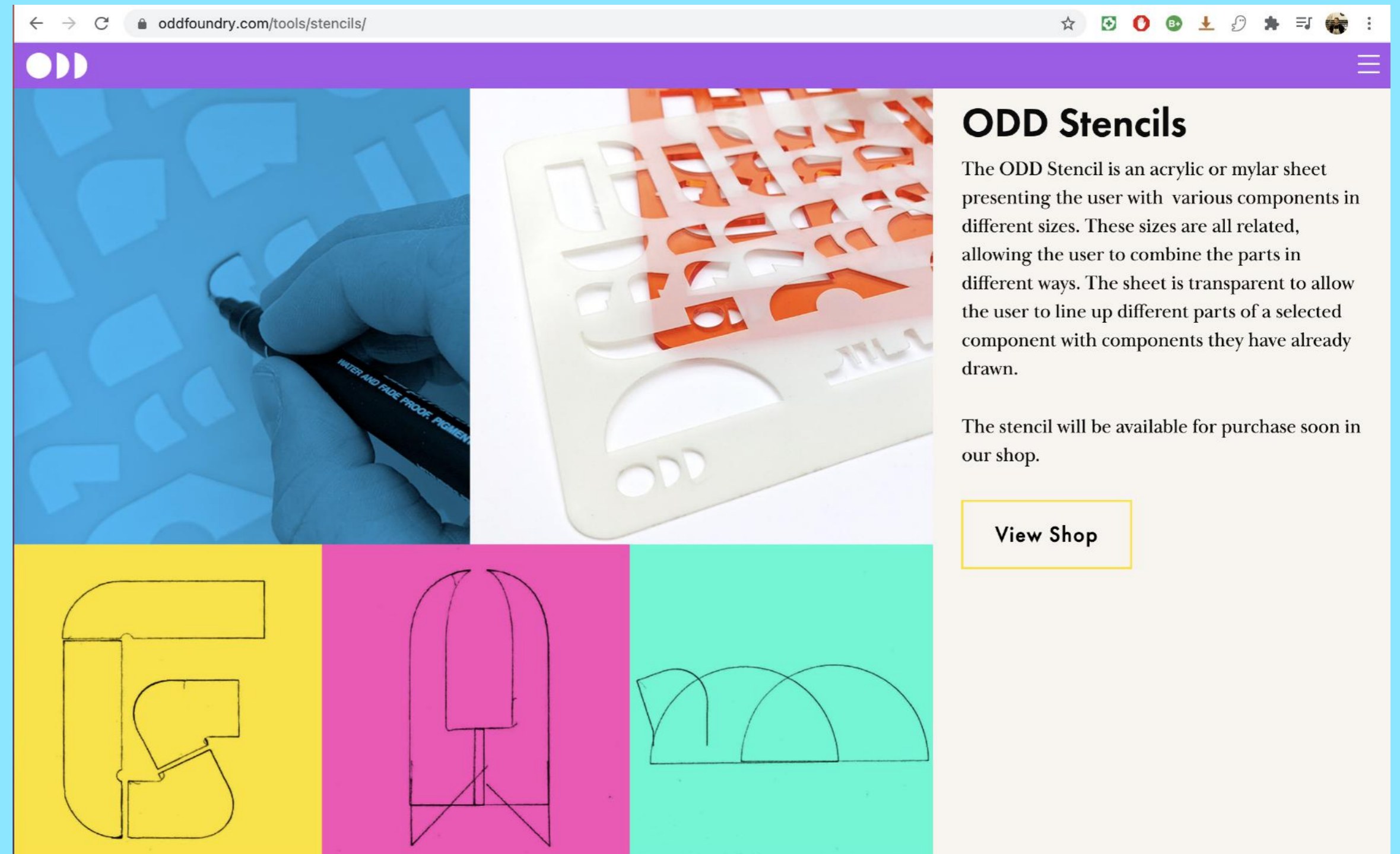
**This tool works best in Chrome on a desktop, though it has some mobile functionality.**





# Stencil Tool

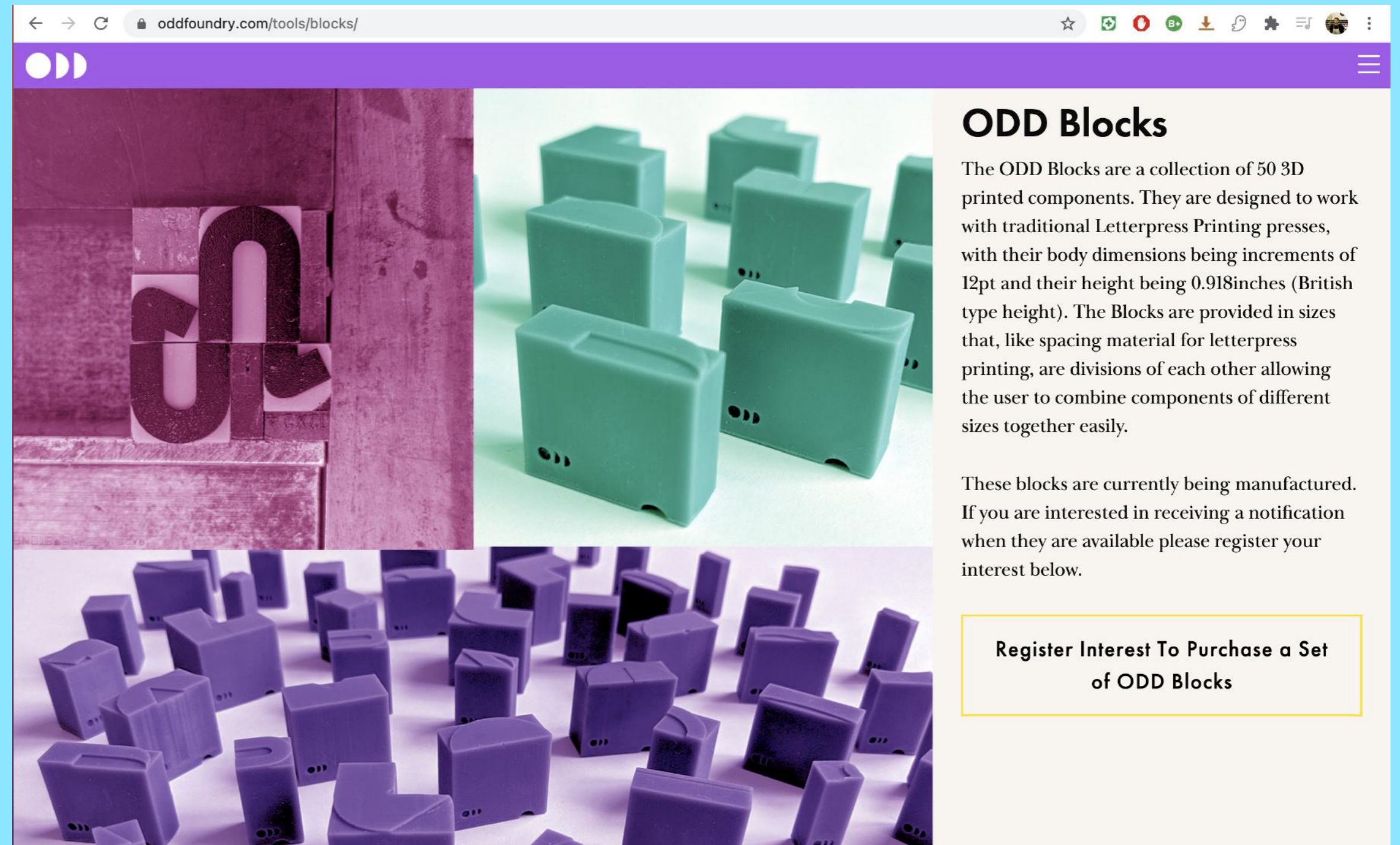
The Stencil is an acrylic or mylar sheet presenting the user with various components in different sizes. These sizes are all related, allowing the user to combine the parts in different ways. The sheet is transparent to allow the user to line up different parts of a selected component with components they have already drawn.





# Blocks Tool

The Blocks are a collection of 50 3D printed components. They are designed to work with traditional Letterpress Printing presses, with their body dimensions being increments of 12pt and their height being 0.918inches (British type height). The Blocks are provided in sizes that, like spacing material for letterpress printing, are divisions of each other allowing the user to combine components of different sizes together easily.



## ODD Blocks

The ODD Blocks are a collection of 50 3D printed components. They are designed to work with traditional Letterpress Printing presses, with their body dimensions being increments of 12pt and their height being 0.918inches (British type height). The Blocks are provided in sizes that, like spacing material for letterpress printing, are divisions of each other allowing the user to combine components of different sizes together easily.

These blocks are currently being manufactured. If you are interested in receiving a notification when they are available please register your interest below.

Register Interest To Purchase a Set of ODD Blocks

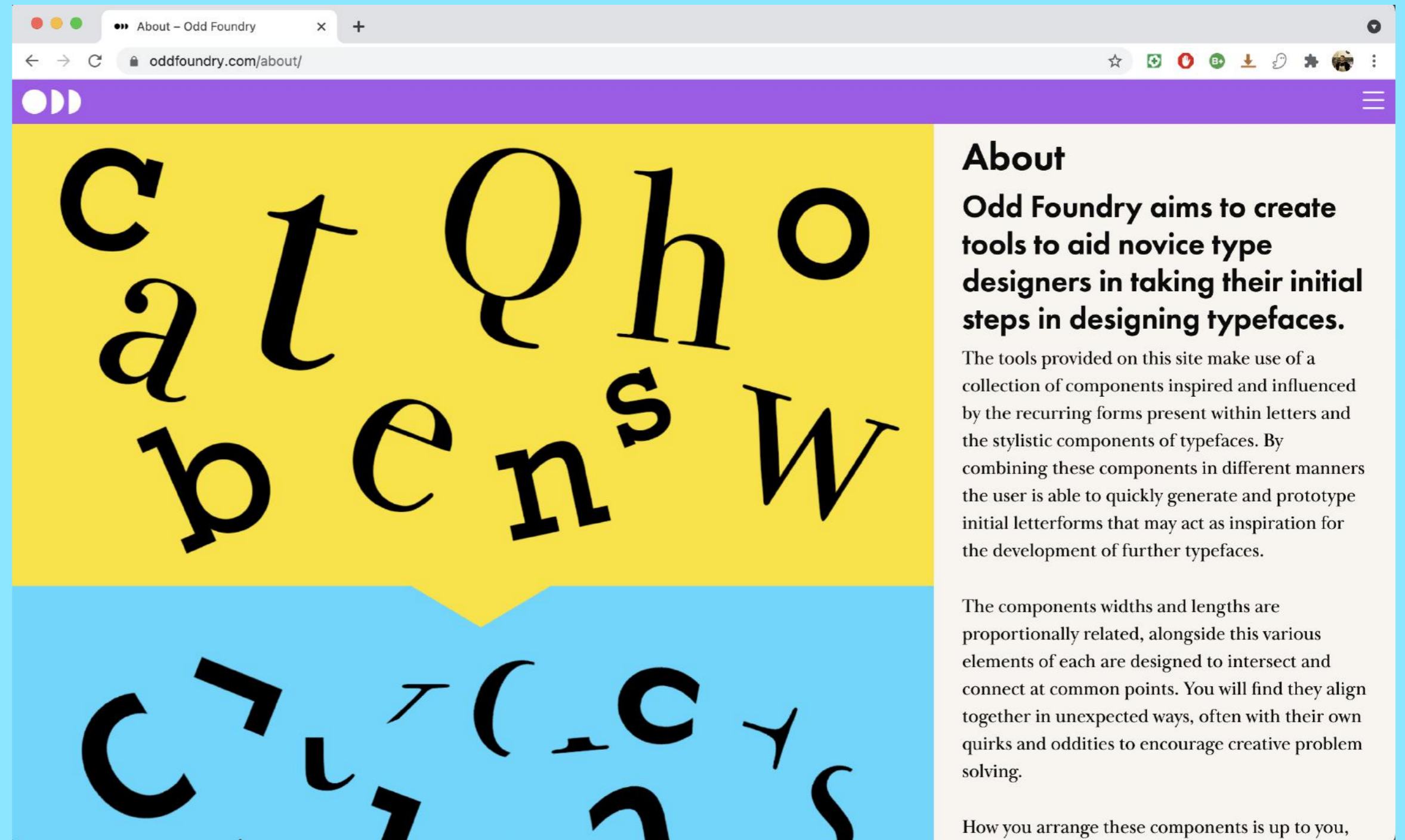
ODD Foundry

Mark Pavey VIC708 Final Project



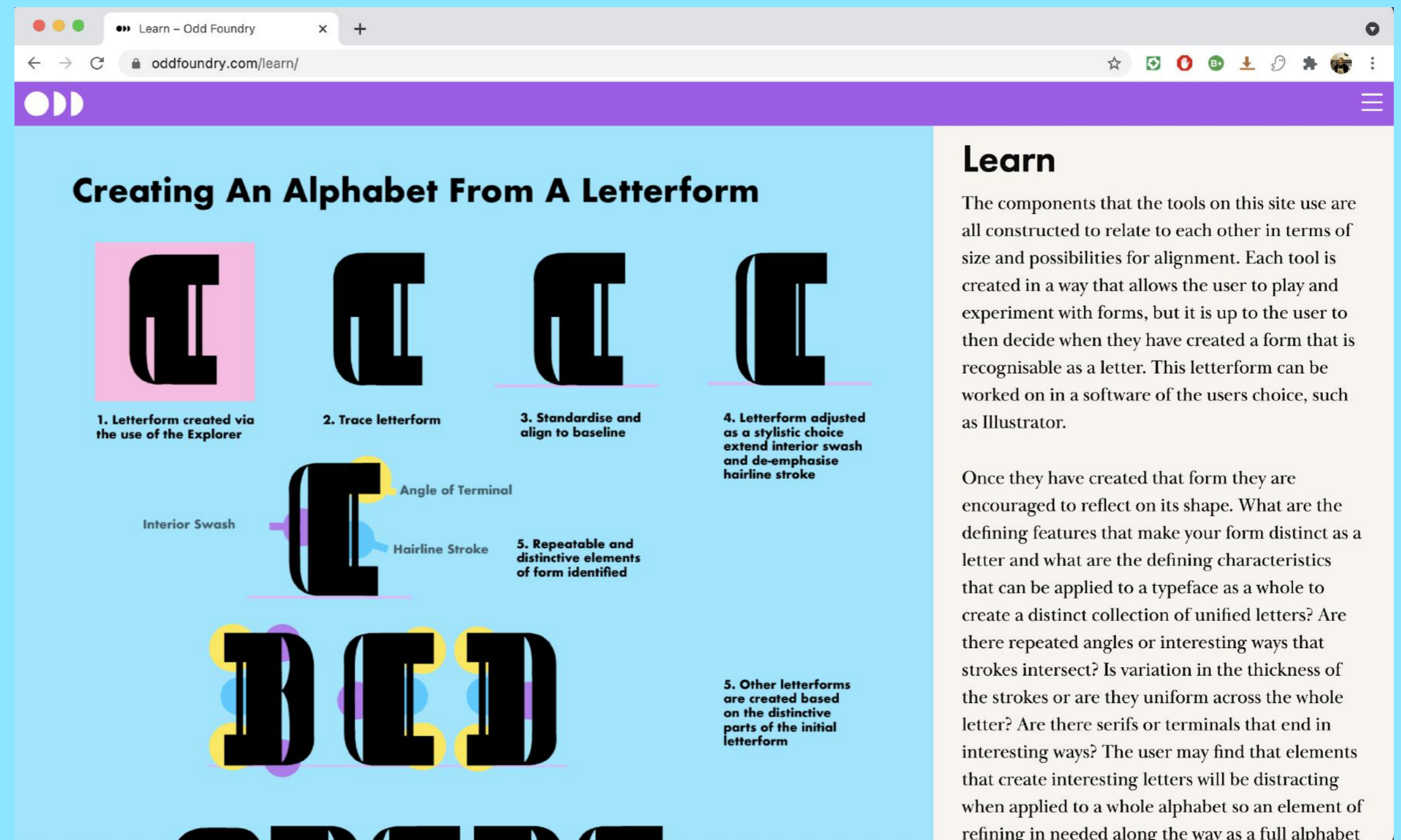
# About Page

The About page details how the components have been developed as well as outlining the underlying concepts behind the Tools development and expected uses.



# Learn Page

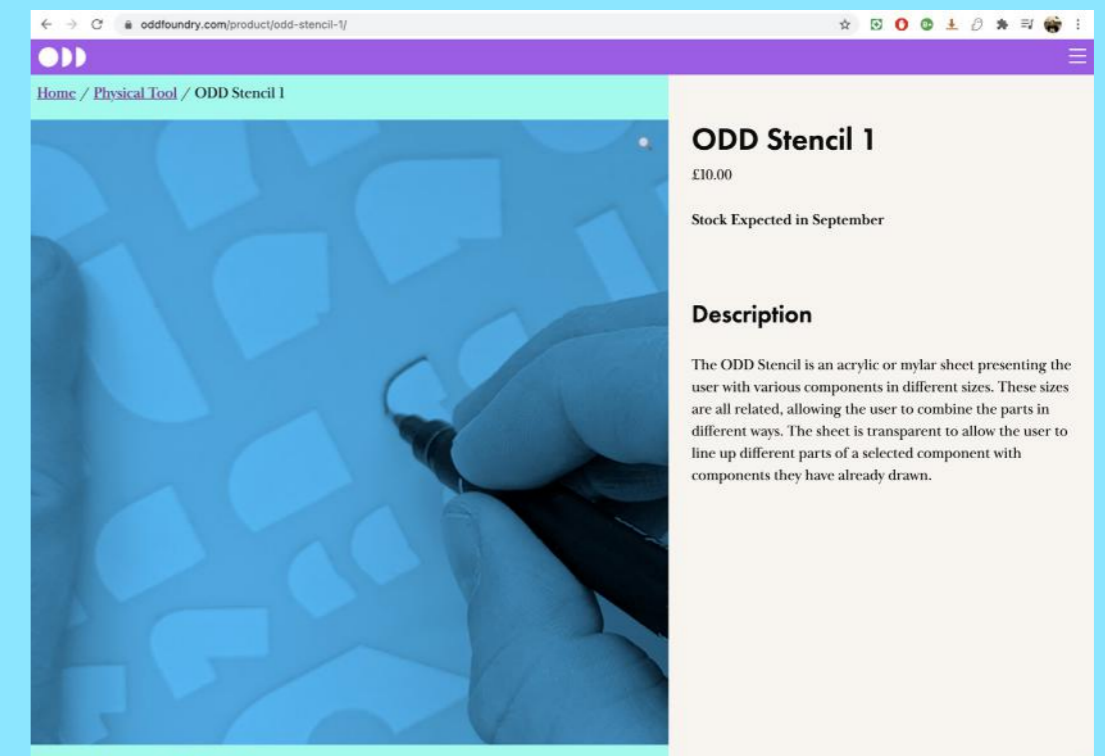
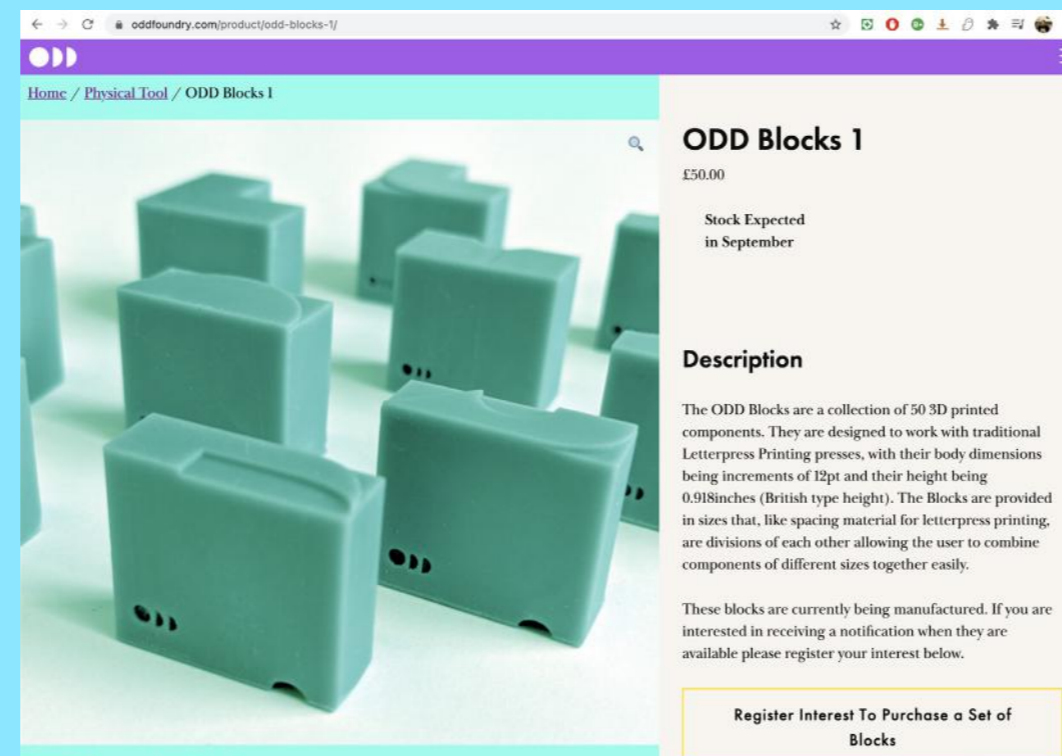
The Learn page explains to users how they can further develop the prototype forms they have created, first into a refined letter and then an full alphabet.





# Shop Pages

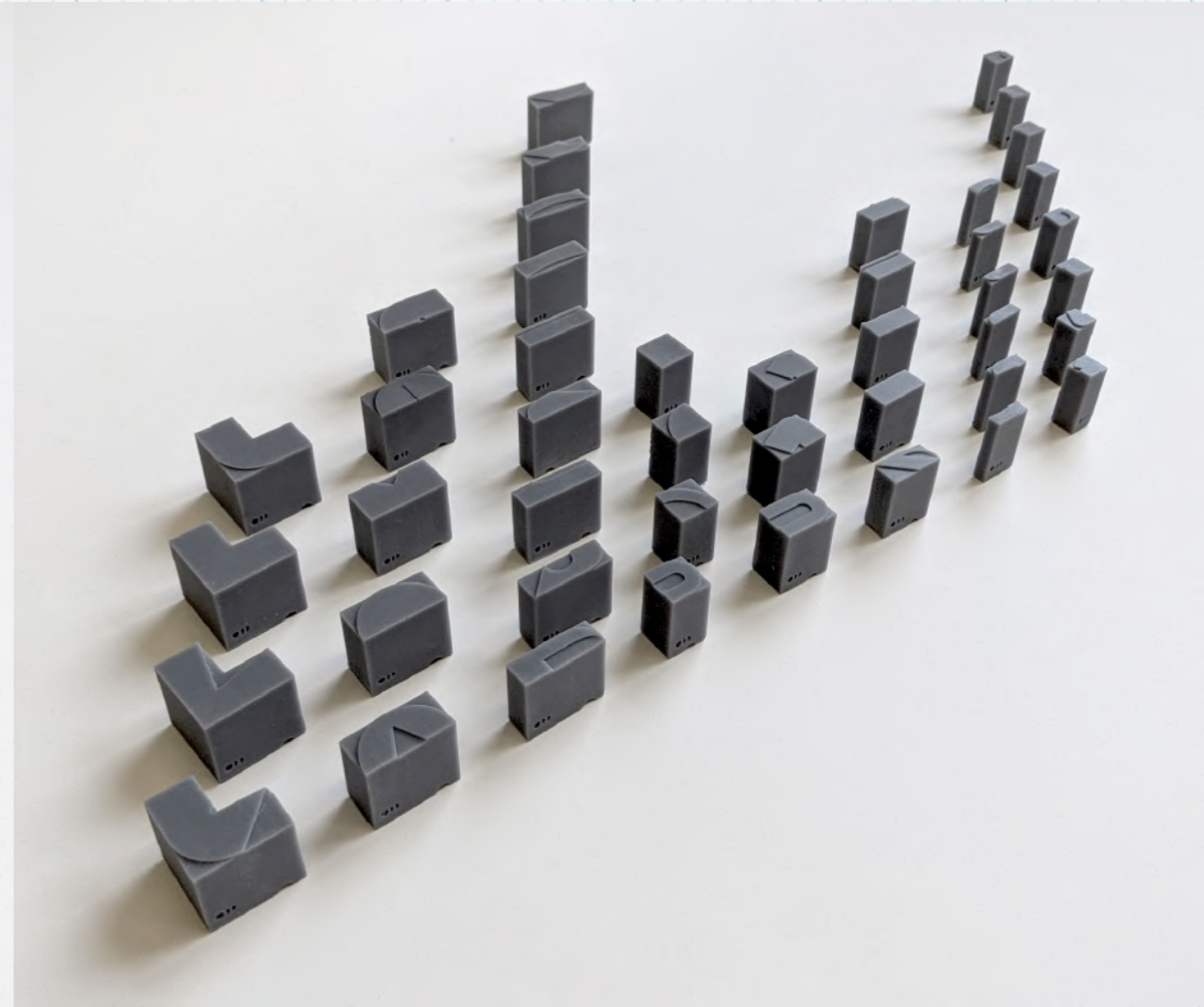
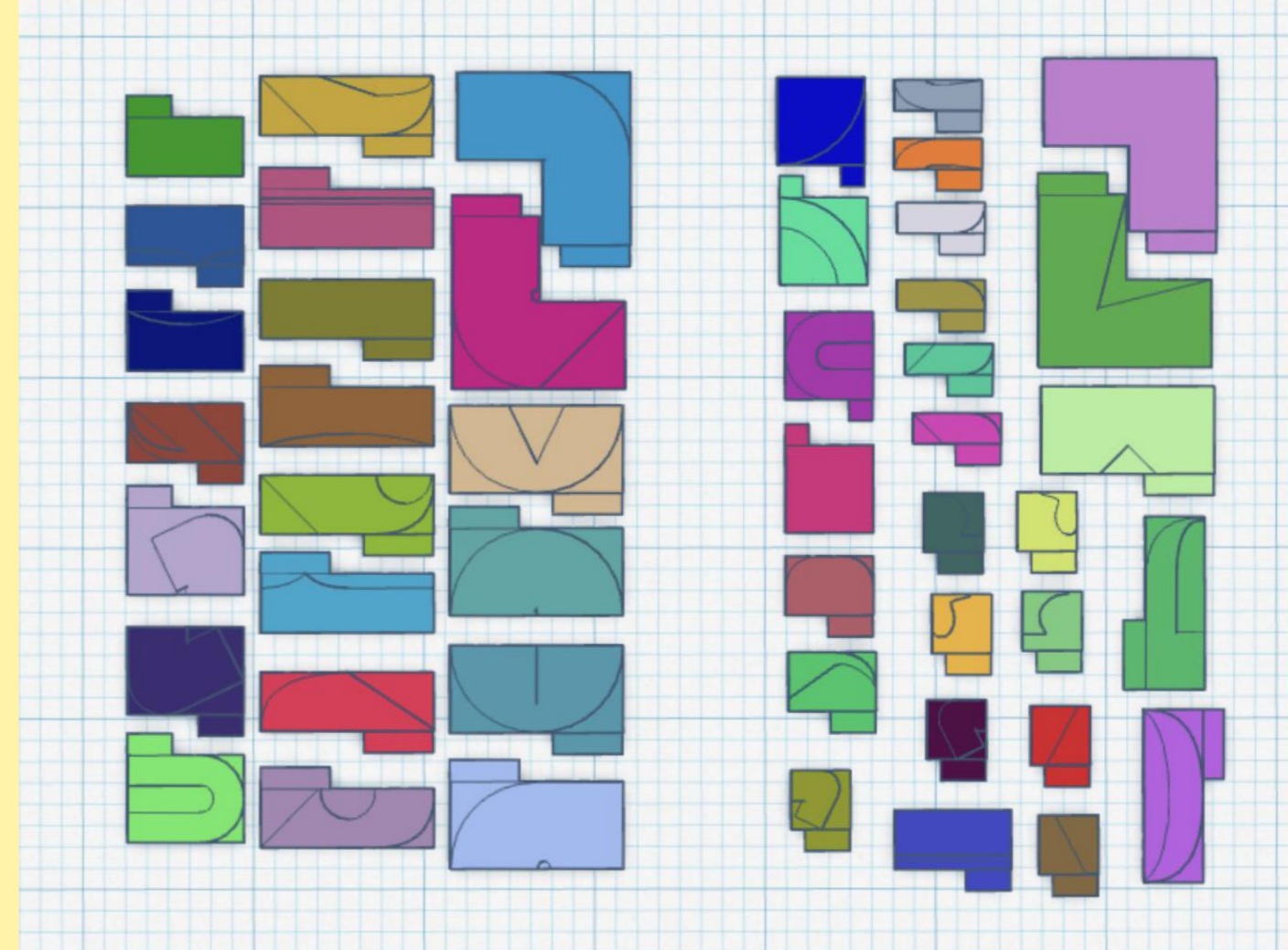
After submission various physical tools will be available for purchase from this area of the site.





# Blocks Details

The designs of each Block.





## Stencil Details

The designs of the Stencils.

