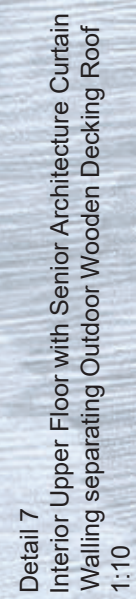
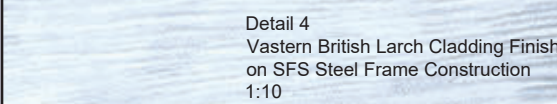
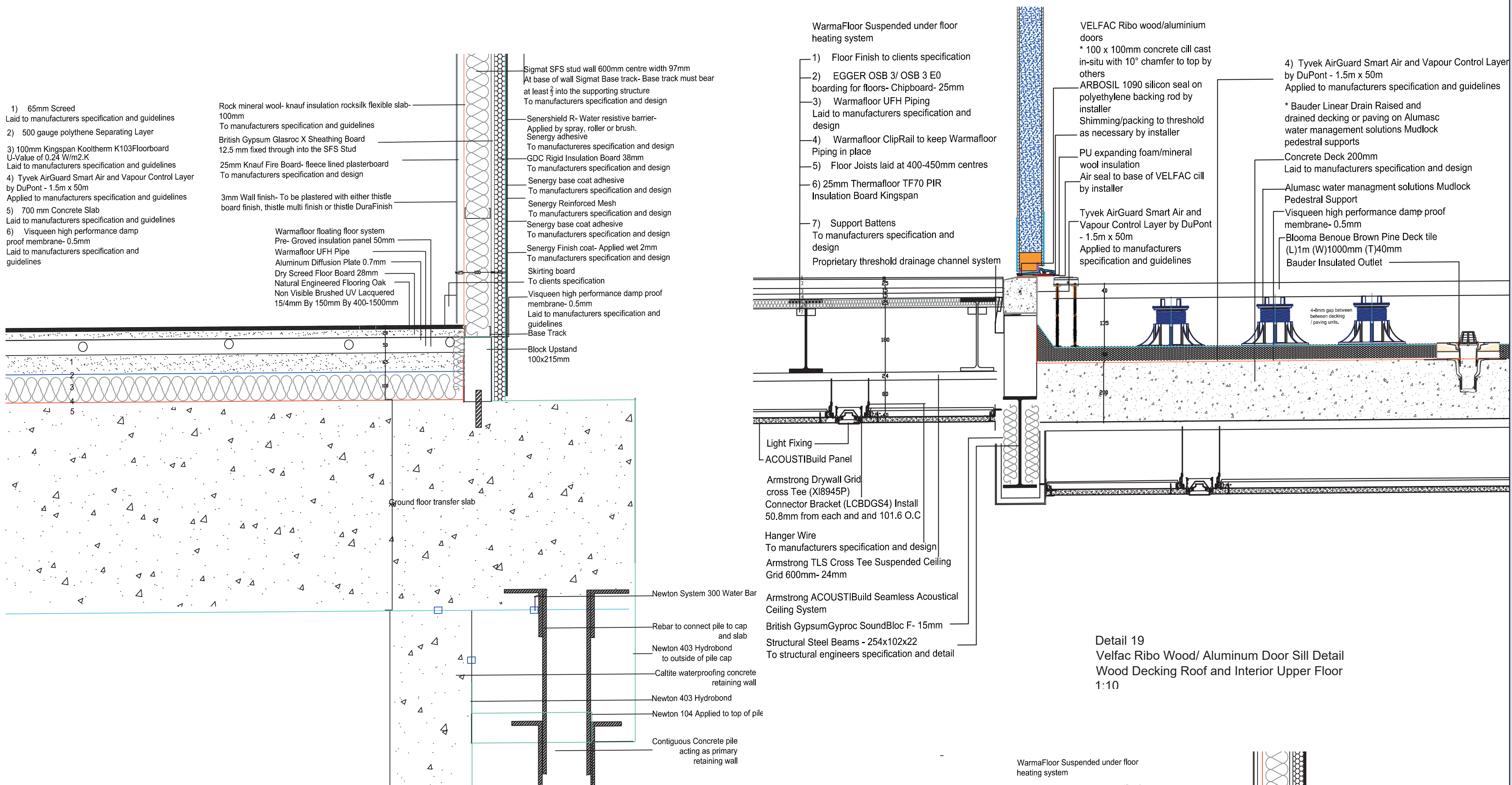


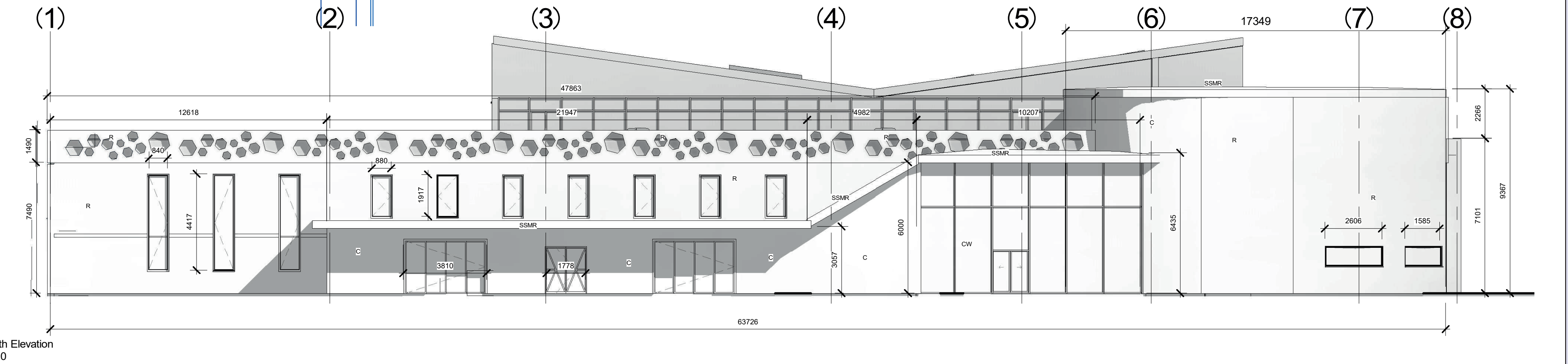
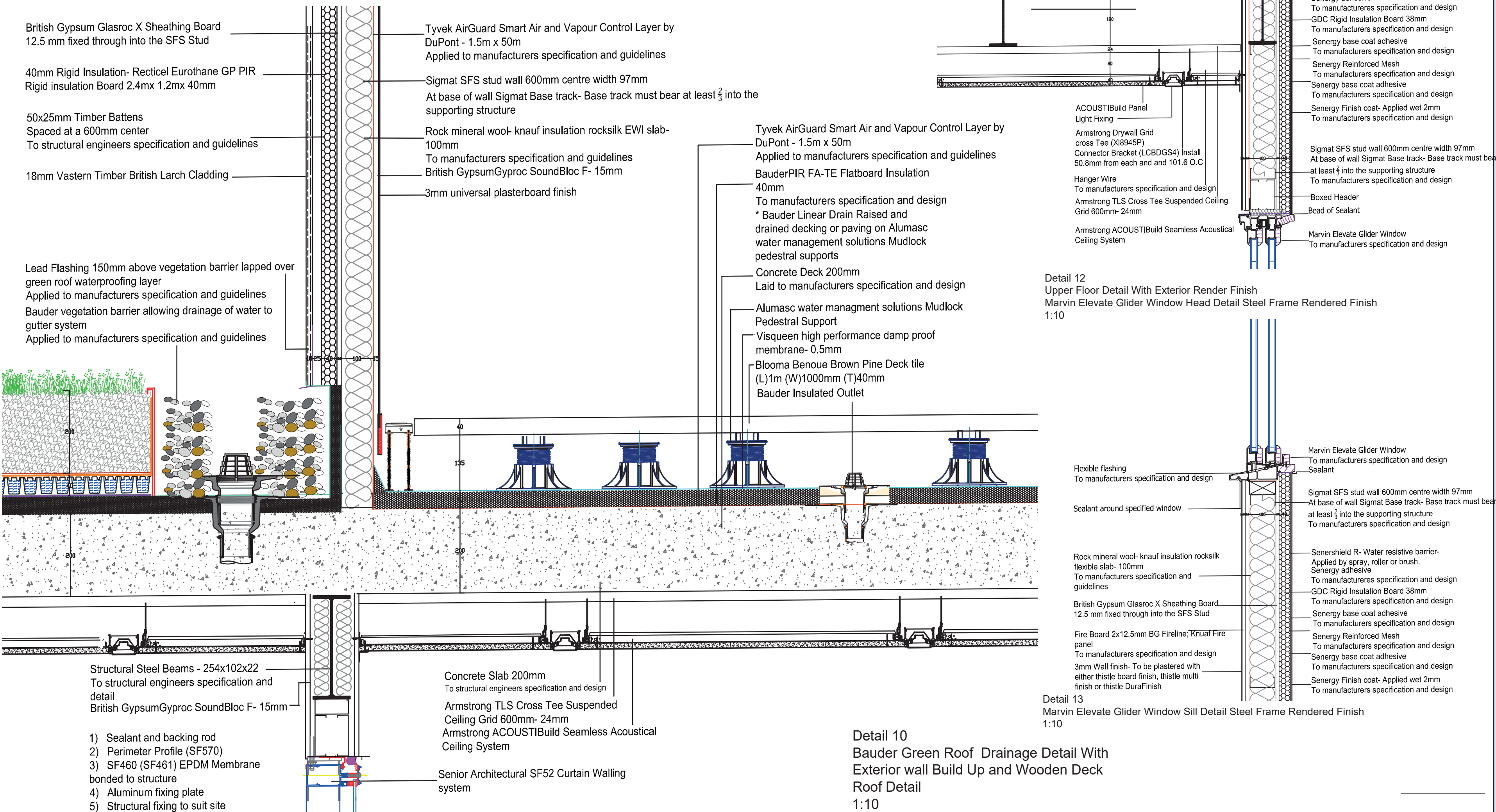
The location of this primary school is in Gayton, Norfolk, this is a small traditional village. This influenced my design as it needed to blend into the surroundings and not be too overpowering. The selected materials are natural and contrasting to each other allowing for a variety of sustainable materials to be used. The existing Gayton C of E primary School was no longer suitable because of size and it being outdated while also not having much consideration towards Disabled users. Through this project, all of those issues have been resolved allowing for a practical as well as modern design to have been created.

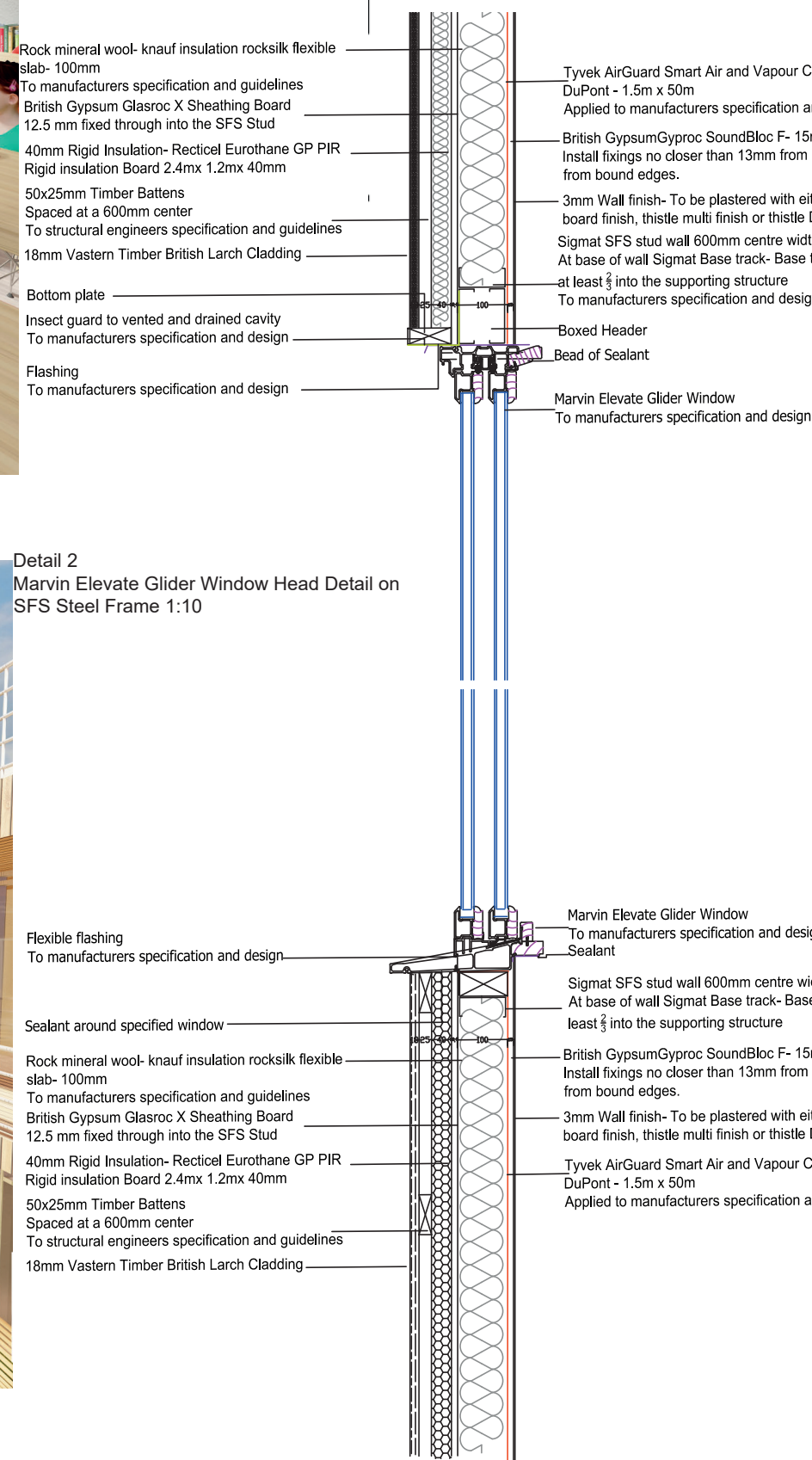
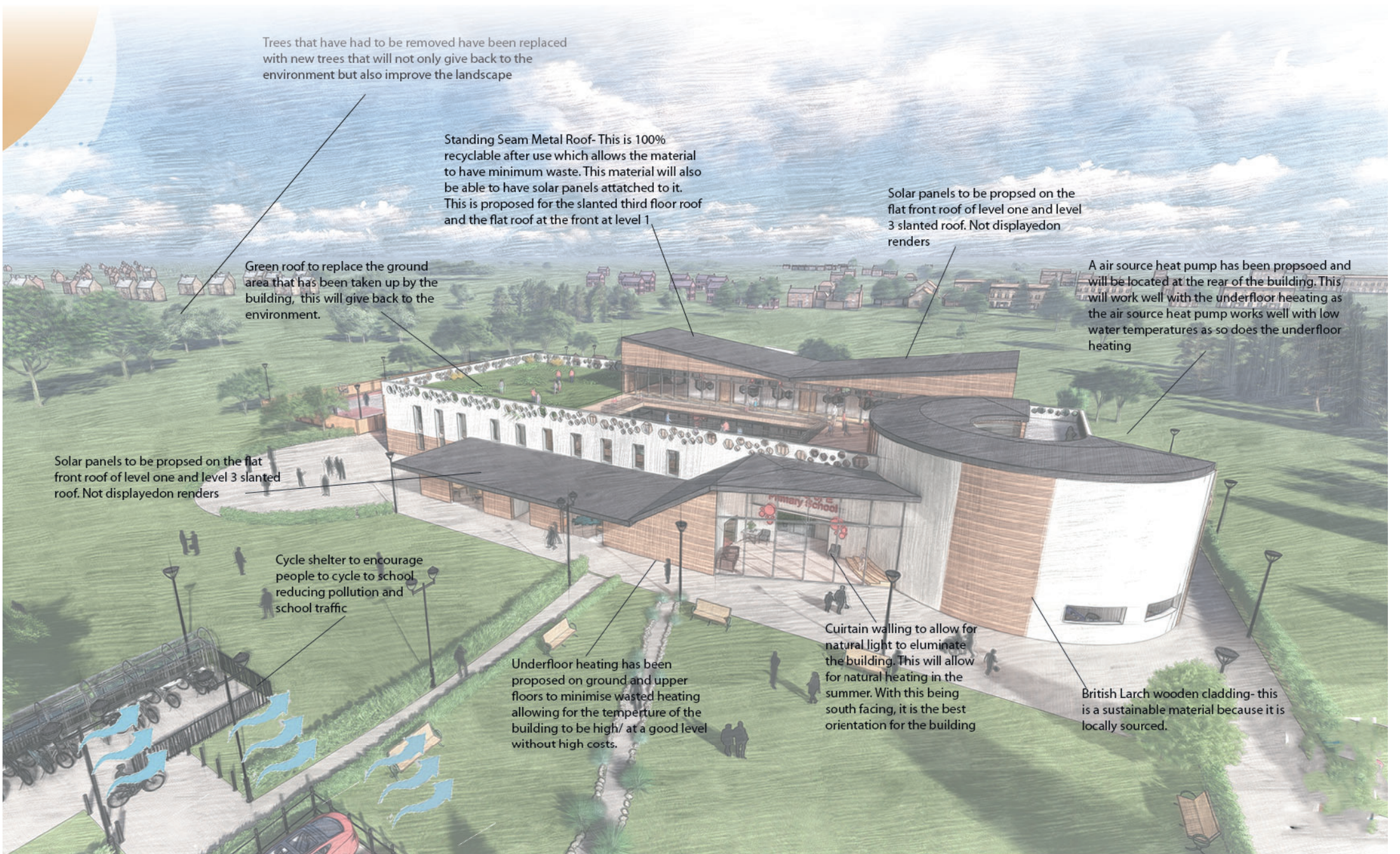
The location of this primary school is in Gayton, Norfolk, this is a small traditional village. This influenced my design as it needed to blend into the surroundings and not be too overpowering. The selected materials are natural and contrasting to each other allowing for a variety of sustainable materials to be used. The existing Gayton C of E primary School was no longer suitable because of size and it being outdated while also not having much consideration towards Disabled users. Through this project, all of those issues have been resolved allowing for a practical as well as modern design to have been created.



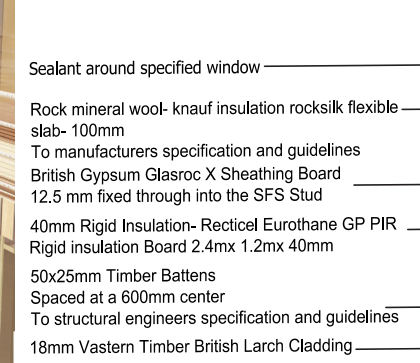


Detail 14
Pile Foundation Detail with Ground Floor and Exterior Render Steel Frame Detail
1:10





Detail 2
Marvin Elevate Glider Window Head Detail on
SFS Steel Frame 1:10



Detail 3
Marvin Elevate Glider Window Sill Detail on
SFS Steel Frame 1:10

Block Upstand 100x215
Structural Steel Beams - 254x102x22
To structural engineers specification and detail

British Gypsum Gyproc SoundBloc F- 15mm
Install fixings no closer than 13mm from cut edges and 10mm from bound edges.

3mm Wall finish- To be plastered with either thistle board finish, thistle multi finish or thistle DuraFinish

Rock mineral wool- knauf insulation rockslab flexible slab- 100mm
To manufacturers specification and guidelines

Sigmat SFS stud wall 600mm centre width 97mm
At base of wall Sigmat Base track- Base track must bear at least 5 into the supporting structure

ARC605 Gaydon
Primary School

ARC605-BR-ARW

Scale: A2 @ 1:10
Drawn: JAW
Checked: JAW

File Path: J:\

Senior Architectural SF52
Curtain Walling system

- 1) Structural Fixing to suit site conditions
To suit Manufactures specification and guidelines
- 2) Aluminum Fixing Plate
- 3) Dead load Fixing Bolt
- 4) Cill Notched to Pass Bolt
- 5) Perimeter Profile SF570#
- 6) SF460 (SF461) EPDM Membrane bonded to structure
- 7) Sealant and Backing Rod
- 8) Flashing

Warmafloor Suspended under floor heating system

- 1) Floor Finish to clients specification
- 2) EGGER OSB 3/ OSB 3 E0 boarding for floors- Chipboard- 25mm
- 3) Warmafloor UFH Piping Laid to manufacturers specification and design
- 4) Warmafloor ClipRail to keep Warmafloor Piping in place
- 5) Floor Joists laid at 400-450mm centres
- 6) PIR floor insulation- 25mm
To manufacturers specification and design
- 7) Support Battens
To manufacturers specification and design

Light Fixing
ACOUSTIBuild Panel
Armstrong Drywall Grid cross Tee (X18945P)
Connector Bracket (LCBDGS4) Install 50.8mm from each and and 101.6 O.C
Hanger Wire
To manufacturers specification and design
Armstrong TLS Cross Tee Suspended Ceiling Grid 600mm- 24mm
Armstrong ACOUSTIBuild Seamless Acoustical Ceiling System

Detail 11
Interior Wall Build Up with Upper Floor Detail
1:10