

WARSASH
MARITIME
SCHOOL

PART OF
SOLENT
UNIVERSITY
SOUTHAMPTON

Careers in maritime

Open day

Saturday 7 October 2023

**MAKE
WAVES**

Welcome to Solent University's Careers in Maritime open day. We're so thrilled to welcome you onto our state-of-the-art campus, and hope your visit gives you a real feel of what life is like as a cadet here.

During your visit you will find out more about the training programmes necessary to qualify as a ship's navigation, engineer or electro-technical officer in the Merchant Navy and the superyacht industry.

The Spark is the central base for the day and includes our shipping company hub, academic teams and support information hub. You'll also have an opportunity to attend one of our 'Life as an Officer' presentations and talk to our cadets about life at Solent University.

For a full programme of events, please see page 6.

We hope you have a fantastic day!



The Pod

The Pod is designed to reflect the region's nautical heritage, our strong maritime links and our forward-looking ethos. It was built by a ship-builders, CIG Architecture, in the Netherlands using the same techniques for creating curved panels for ships. The Pod is designed by Scott Brownrigg and was engineered by Scott White and Hookins. This company also worked on the sculpture in the Stratford Olympic Park (ArcelorMittal Orbit).

 Warsash Maritime School
 @warsashmaritime
 @warsashmaritime
 07712 402 951

#SolentOpen



World-class simulation centre

Offering unrivalled training opportunities for the entire maritime industry. State-of-the-art 360 bridge simulators. Crane operations. Vessel traffic service. Traditional pilotage training.

Discover the future of maritime training by taking a tour of the simulation suite today.

Find out more

For more details visit www.solent.ac.uk/sim-centre

Our world-class sim centre offers access to the very latest facilities:

- 7 full-mission navigational bridges
- 2 full-mission Dynamic Positioning (DP) Class A simulators and 4 desktop DP stations
- 4 multi-purpose desktop simulation classrooms
- 2 ECDIS suites
- On-and off-shore crane and tug simulators
- Liquid cargo simulators
- Full-mission engine and hybrid ships simulators
- HV simulators
- GMDSS radio communications and VTS suites
- Software for the creation of virtual simulated maritime and onshore environments
- 4 debriefing classrooms.



General Presentations	Duration	Location	Times
Life as an officer Talks from our senior lecturers on the life and work of a ship's deck, engineer and electro-technical officers.	1 hour	Palmerston lecture theatre, Spark building SMC239/240, St. Mary's Campus Please head to TS110 by 10.45am. Our academic team will meet you there and accompany you to St. Mary's Campus.	Deck 10am and 12noon Engineering/ETO 11am

Drop-in areas	Location	Times
Meet the shipping and recruitment companies Talk to the professionals about your potential career in maritime.	The Spark Atrium	9.30am–2pm
Information hub Including Admissions, Student Services and Accommodation.	The Spark Atrium	9.30am–2pm
Meet our officer cadets Chat to our cadets who will share their experience of the course and answer any of your questions.	The Spark Atrium	9.30am–2pm

Tours	Location	Times
Self-guided campus tour You are welcome to walk around the East Park Terrace campus and visit the library, maritime simulation suite and the sports complex. You can also visit the campus tour information hub in the Spark Atrium, where you can find answers to any campus-related questions.	East Park Terrace campus	9.30am–2pm
Student residence tours Either walk or catch the bus from outside the Spark building to our St. Mary's Campus where you can also visit our student accommodation, Deanery and Chantry. Please note that students can tour the residence with one other guest only.	See page 10	10am–2.30pm Tours last approx. 15 mins
Engine Workshop Either walk or catch the bus from outside the Spark building to our St. Mary's Campus.	St Mary's Campus, ground floor – see map	10am–2pm Tours last approx. 15 mins



Jurys Inn roundabout

- i** University reception
- A** Car park identification
- Accessible parking
- Motorcycle parking
- Cycle storage
- Dog spending pen
- Building entrance
- Accessible building entrance
- Accessible route

St Andrews Road

One way

P Overflow carpark on Northam Road

New Road

East Park Terrace

Southampton Central station

East Park Terrace

- 1 Open day registration and welcome
 - 2 Shipping and recruitment companies hub
 - 3 Support Services information hub
 - 4 General information
 - 5 Southampton city hub
 - 6 Campus tour information hub
 - 7 Cadetships and superyacht information
 - 8 Solent Sports Complex tour
 - 9 Library tour (open 10am-2pm today)
 - 10 Maritime simulation suite tour and demonstration
 - 11 Safety and survival demonstration
 - 12 Life as a Deck Officer presentation, level 0
- Shuttle bus departure point



East Park Deli
JM building | Open 9am-2pm
Drinks, pastries, cakes, deli sandwiches, hot pots and healthy boxed salads



Hop on our free shuttle bus from East Park Terrace campus to St Mary's campus. You'll be shown the engine workshop and you can head to both the Deanery and Chantry Student Residences for a guided tour afterwards.

St Mary's campus

- 13 Engine workshop tour, floor 0
- 14 Life as an Engineering/ET Officer presentation, level 2





Visit our residences

Both our Deanery and Chantry residences will be open today from 10am-2.30pm. Our map on pages 14-15 shows the self-guided walking route to Deanery and Chantry from our East Park Terrace campus.

Alternatively, you can catch the bus from outside the Spark building down to St. Mary's Campus where you can visit both the St. Mary's Campus and Deanery and Chantry residences. Deanery offers ensuite accommodation, whilst Chantry offers non en-suite accommodation. We therefore recommend visiting both to compare.

Please note that due to the number of people attending today's event, students will be able to tour the accommodation with one guest only. All other guests are welcome to make use of the activities available on-campus over this time.





Solent sports complex

Our sports complex provides sport and physical activity facilities for all students, and superb teaching spaces for our sport, health and fitness related degree programmes.

Head to the venue to speak to the Solent Sports Team and take a guided tour of the facilities. Our team will be available from the reception desk in the main entrance of the building. You can find more details on the sports complex at www.solent.ac.uk/sportscomplex

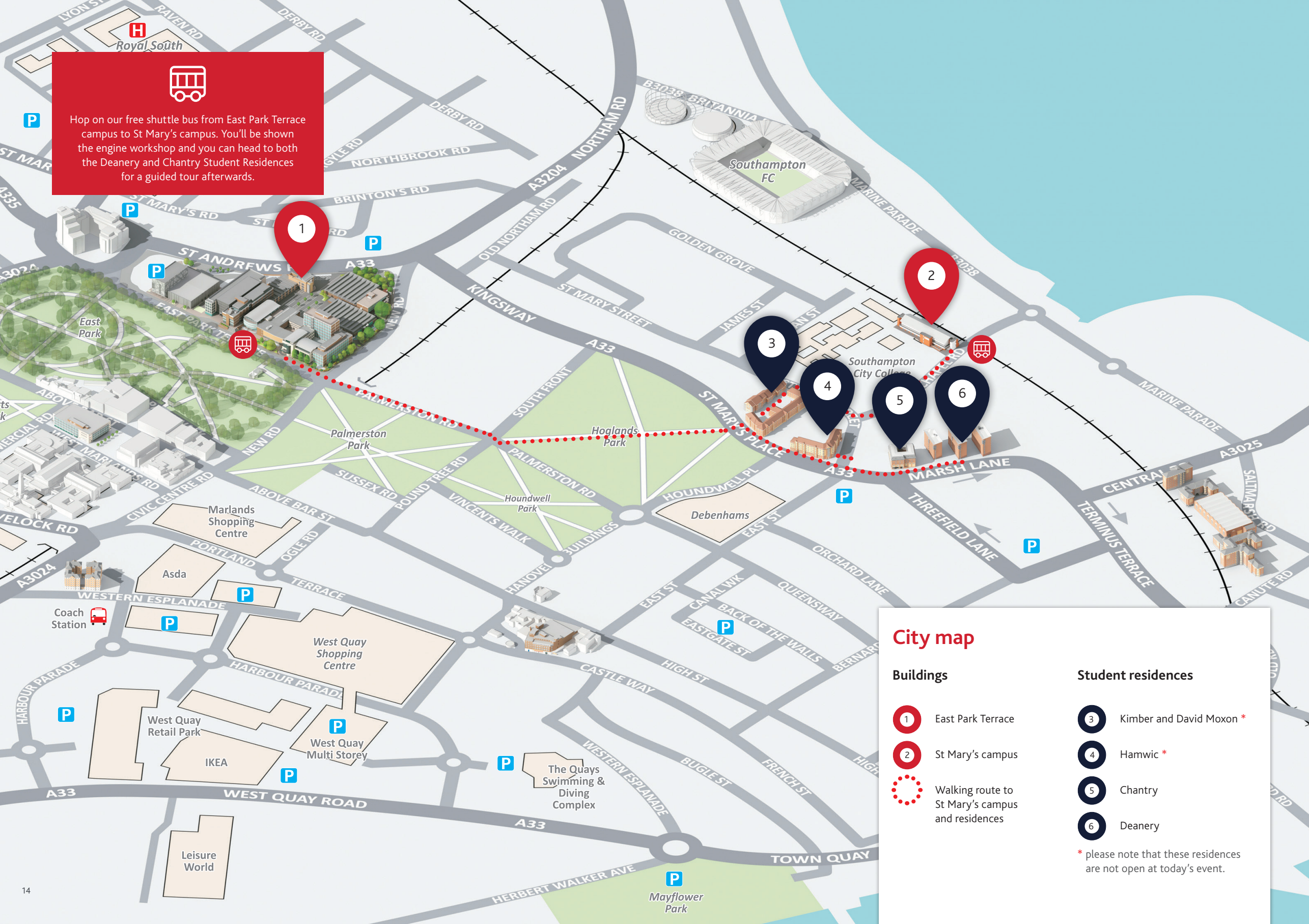
The sports complex features:

- Two sports halls (including performance, events and multi-purpose facilities).
- Two fitness studios and spin studio.
- General purpose gym.
- Strength and conditioning high-performance gym.
- Health and fitness, and personal training teaching gyms.
- Sports and exercise therapy clinical space.





Hop on our free shuttle bus from East Park Terrace campus to St Mary's campus. You'll be shown the engine workshop and you can head to both the Deanery and Chantry Student Residences for a guided tour afterwards.



City map

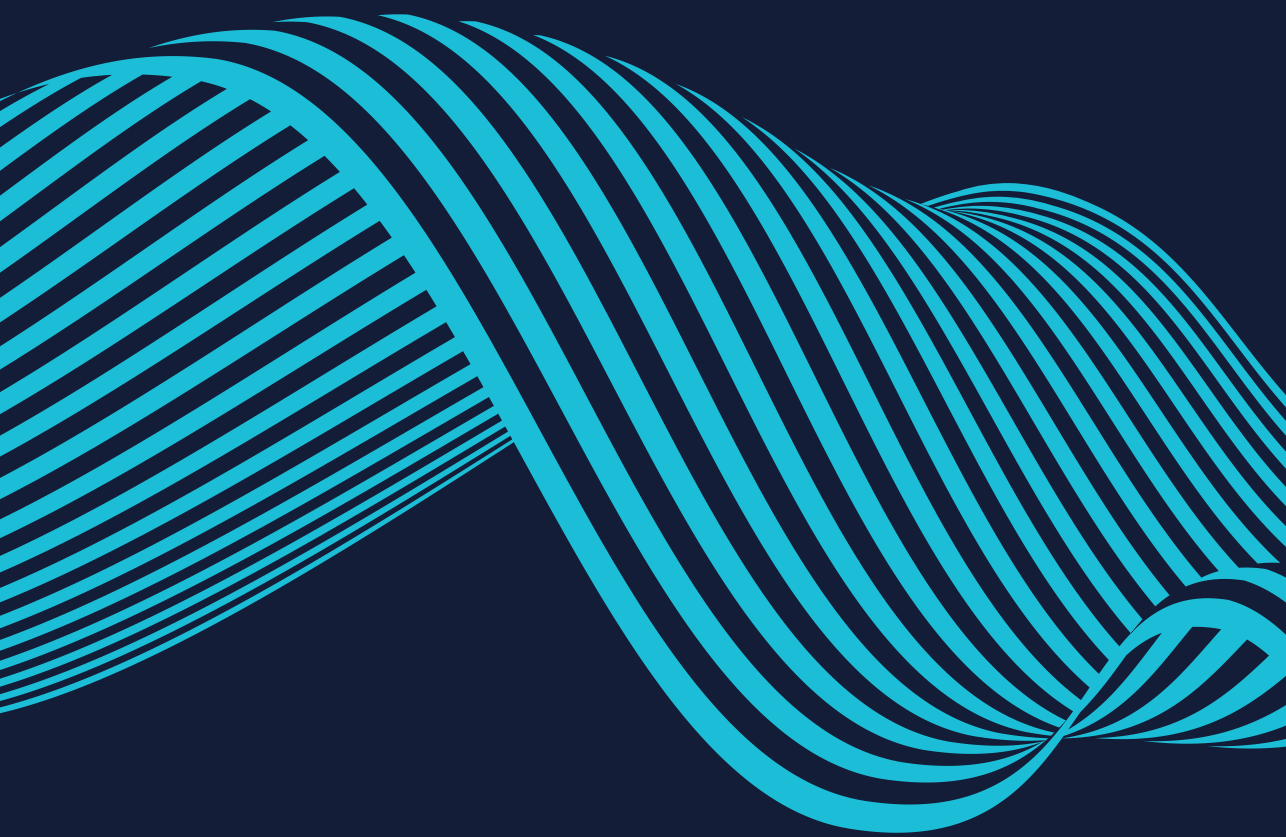
Buildings

- 1 East Park Terrace
- 2 St Mary's campus
- Walking route to St Mary's campus and residences

Student residences

- 3 Kimber and David Moxon *
- 4 Hamwic *
- 5 Chantry
- 6 Deanery

* please note that these residences are not open at today's event.



Solent University
East Park Terrace
Southampton
SO14 0YN

T. +44 (0)23 8201 3039
E. opendays@solent.ac.uk
www.solent.ac.uk

 [solentuniversity](https://www.facebook.com/solentuniversity)
 [@solentuni](https://twitter.com/solentuni)
 [solentuniversity](https://www.instagram.com/solentuniversity)
 [solentuni](https://www.youtube.com/solentuni)
 [Solent University](https://www.linkedin.com/company/solent-university)
 [@solentuniofficial](https://www.tiktok.com/@solentuniofficial)

#SolentOpen