

The logo consists of a white circle containing the text "Southampton Solent University" in a red, sans-serif font, stacked in three lines.

**Southampton  
Solent  
University**

# Postgraduate and Apprenticeships open day

Saturday 26 April 2025

A series of red, wavy lines that flow from the bottom left towards the top right, creating a sense of movement and energy.

**MAKE  
WAVES**



Welcome to Southampton Solent University's open day, we're so excited to welcome you to our state-of-the-art campus and hope your visit enables you to get a real feel of what it's like to be a student here.

During your visit you'll see why we have been awarded triple gold for teaching excellence (TEF 2023) with tours of our amazing facilities, by speaking to our academics about our courses, visiting the accommodation and meeting with our support teams who can answer any questions you have on student life here at Solent.

If you have any questions during your visit, speak to one of our friendly Student Ambassadors, or visit one of the Information points located within the Spark, where one of the team will be very happy to help you.

We hope you have a fantastic day!

## Follow us on

-  solentuniversity
-  @solentuni
-  solentuniversity
-  solentuni
-  Solent University
-  @solentuniofficial

#WeAreSolent

Solent is committed to climate and social justice – and as part of that commitment we recognise the important role we have to play in promoting sustainability and improving the quality of the environment for students, staff and the wider community.

To find out more visit  
[www.solent.ac.uk/about/environment-sustainability](http://www.solent.ac.uk/about/environment-sustainability)

Plan your day around your postgraduate or apprenticeship presentation and then decide what other activity you might want to schedule into your day.



Our free shuttle bus from East Park Terrace down to our Chantry residence departs from outside the library every 30 minutes until 3pm.



Find a flyer in your goody bag for special open day catering promotions, discounts and deals.



Complimentary refreshments are served in the Spark throughout the day.



Head on a campus tour and explore some of the amazing facilities we have here at Southampton Solent.



Our multi faith space can be found in MBL04 (the library) and our sensory room is in JM108, accessed through the Spark atrium.





- i** University reception
- A** Car park identification
- ♿** Accessible parking
- 🏍️** Motorcycle parking
- 🚲** Cycle storage
- 🐕** Dog spending pen
- 🚶** Building entrance
- 🚶** Accessible building entrance
- 🚶** Accessible route

## East Park Terrace

- |  |   |
|--|---|
| 1 Entrance   | 11 Library information hub                          |
| 2 Welcome and registration                             | 12 Complimentary food stalls                        |
| 3 Information hub                                      | 13 Solent Sport information hub                     |
| 4 Southampton city hub                                 | 14 Alumni information hub                           |
| 5 Undergraduate course information hub                 | 15 Research hub                                     |
| 6 Support services hub                                 | 16 <b>Apprenticeships hub</b>                       |
| 7 Shuttle bus departure point<br>(outside the library) | 17 <b>Postgraduate hub</b><br>(The Bridge, level 4) |
| 8 Maritime Simulation Suite                            | 18 Complimentary ice cream                          |
| 9 Re:So  | 19 Competition stand                                |
| 10 JM social space – Media hatch demos                 |   |

## Building names

The Spark (TS) | Solent Sports Complex (SB) | Sir John Everett Millais (JM) | Solent Library (ML) | Michael Andrews (A)  
Reginald Mitchell (RM) | Sir Christopher Cockerell (CC) | Herbert Collins (HC)

## Catering outlets

- East Park Deli**  
**JM building | Open 8.30am–3pm**  
Offering freshly brewed Starbucks coffee, a variety of cold drinks along with sandwiches, snacks and cakes, jacket potatoes and soup.
- Costa Coffee**  
**Andrews building | Open 9am–3pm**  
Freshly brewed Costa coffee as well as a range of food items including breakfast rolls, lunchtime meal deals, snacks and cakes.
- The Dock**  
**Andrews building | Open 11am–2pm**  
Offering an array of food options all under one roof. Check your goody bag for the latest offers available. The restaurant operates a click-and-collect service via the Everyday app.
- C-Store**  
**Andrews building | Open 9am–3pm**  
Our on campus convenience store, offering groceries, confectionery, sandwiches, snacks, drinks and coffee.

Visit our Re:So store located in the Spark level 1 – and find out more about our unique retail initiative.



Head over the **Solent Sports Complex** to watch numerous sporting fixtures taking place throughout the day, including National League Basketball and wheelchair rugby.



Postgraduate and Apprenticeships presentations	Duration	Location	Times
<b>Introduction to Postgraduate study:</b> Find out more about studying at a postgraduate level, life in Southampton, support services and more.	30 mins	TS202	10.15am
<b>Apprenticeships at Solent:</b> Find out everything there is to know about studying for an apprenticeship, including what an apprenticeship is and their benefits.	30 mins	TS111	10.15am

General Presentations	Duration	Location	Times
<b>Welcome to Southampton Solent University:</b> Our Vice Chancellor, Professor James Knowles, welcomes you to Southampton Solent.	30 mins	Jane Austen	9.30am
<b>Sport at Solent:</b> Join the team who will be covering everything Sport at Solent, from sport excellence and BUCS to school games, active campus and student sporting opportunities.	20 mins	Palmerston	2.25pm

Drop-in areas	Location	Times
<b>Postgraduate hub:</b> Speak to the academic teams and find out more about your course of interest.	The Bridge, Level 4, The Spark	9am-3pm
<b>Apprenticeships hub:</b> Speak to the team and find out more about the available apprenticeships and what life is like as a Solent student.	The Spark Atrium	9am-3pm
<b>Solent Library:</b> Pop in to meet the team and find out more.	Solent Library	9.30am-3pm
<b>Sport at Solent:</b> Head to the Solent Sports Complex to hear from the team about sports, gym membership and clubs at Solent.	Solent Sports Complex	9am-3pm
<b>Support Services information hub, including:</b> Admissions and Enrolment, Accommodation, Solent Careers and more.	The Spark Atrium	9am-3pm
<b>Maritime Simulation Suite:</b> Meet the team, take a tour and experience our 360 degree simulator.	Andrews concourse	9am-3pm

Tours	Location	Times
<b>Postgraduate and Apprenticeships campus tour:</b> Head up to the Bridge on level 4 of the Spark after your presentation to join your postgraduate or apprenticeships specific tour.	The Bridge, level 4, The Spark	10.45am-11.25am
<b>Student residences:</b> These tours last around 15 minutes and are run by our Residence Life Assistants. Students can tour the residence with one other guest only. See page 8 for more information.	Kimber residence (ensuite) and Chantry residence (non-ensuite)	9.30am-3.30pm
<b>City tours:</b> Explore our beautiful city with Go Southampton. Visit the team at the Southampton City hub to join the tour. This tour will take approximately 40 mins.	Leaving from Southampton City Hub stand in the Spark atrium	11.25am
<b>Maritime Simulation Suite:</b> Meet the team, take a tour and experience our 360 degree simulator.	Andrews concourse	9am-3pm





## Visit our residences

### Accommodation tours

Our Chantry residence is open today from 9.30am-3.30pm for tours. The Chantry residence offers non-ensuite accommodation and is an option for those looking to study at postgraduate level. The map on page 10 details the walking route and the locations of our residences, all of which are just a 10-20 minute walk from the campus.

\*Please note that our Kimber residence is also open for tours today, but this residence is for undergraduate students only.

### Prefer to take the coach?

Hop on our free shuttle bus from East Park Terrace down to our Chantry residence. Meet our ambassadors outside the library and they will direct you to the coach which departs every 30 minutes until 3pm.

### Find out more

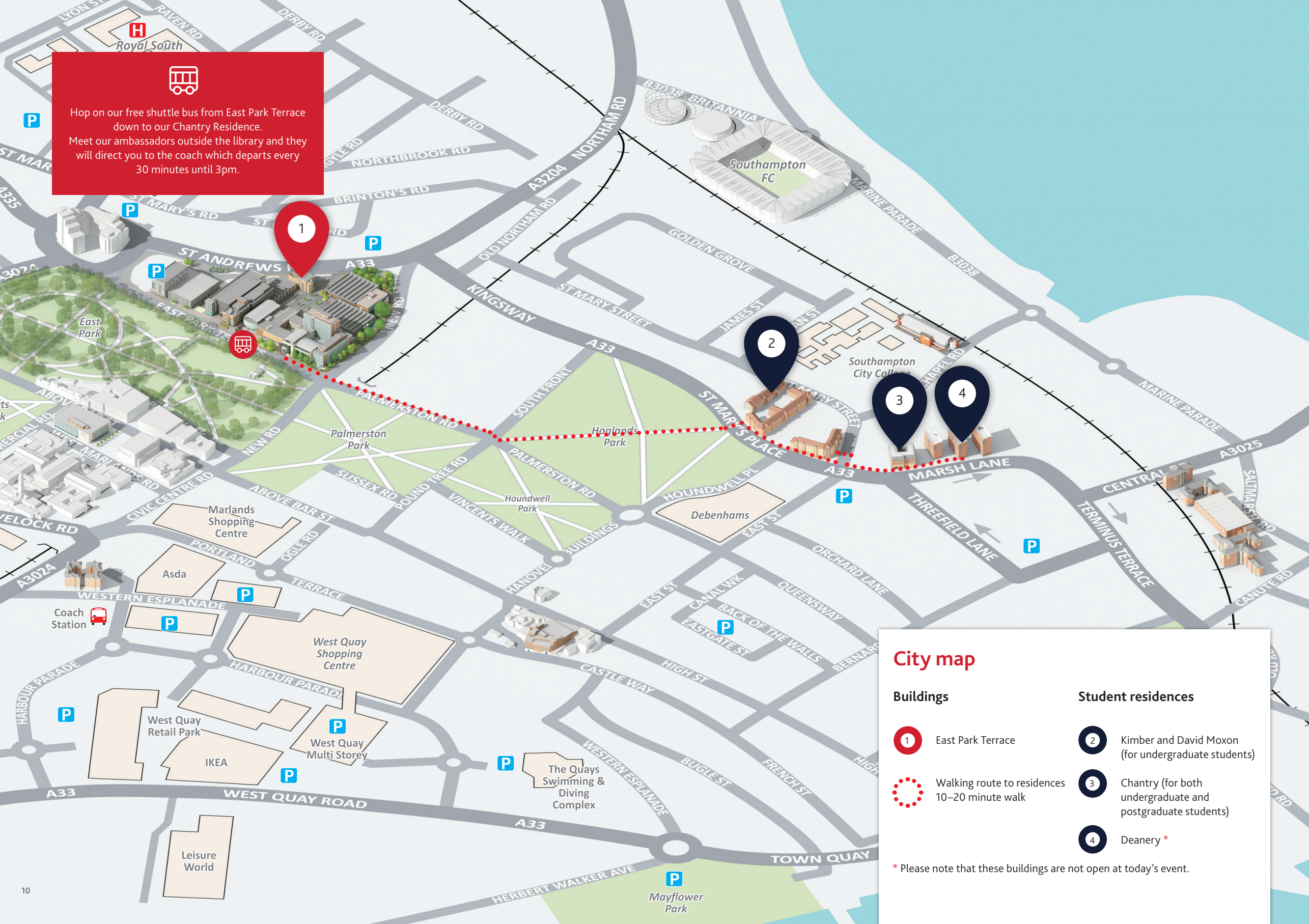
Visit our friendly accommodation team in the Spark Atrium who can answer any questions you may have.







Hop on our free shuttle bus from East Park Terrace down to our Chantry Residence.  
Meet our ambassadors outside the library and they will direct you to the coach which departs every 30 minutes until 3pm.



## City map

### Buildings

- 1 East Park Terrace
- Walking route to residences  
10–20 minute walk

### Student residences

- 2 Kimber and David Moxon  
(for undergraduate students)
- 3 Chantry (for both  
undergraduate and  
postgraduate students)
- 4 Deanery \*

\* Please note that these buildings are not open at today's event.



## Plan your day

[illegible]

## Notes

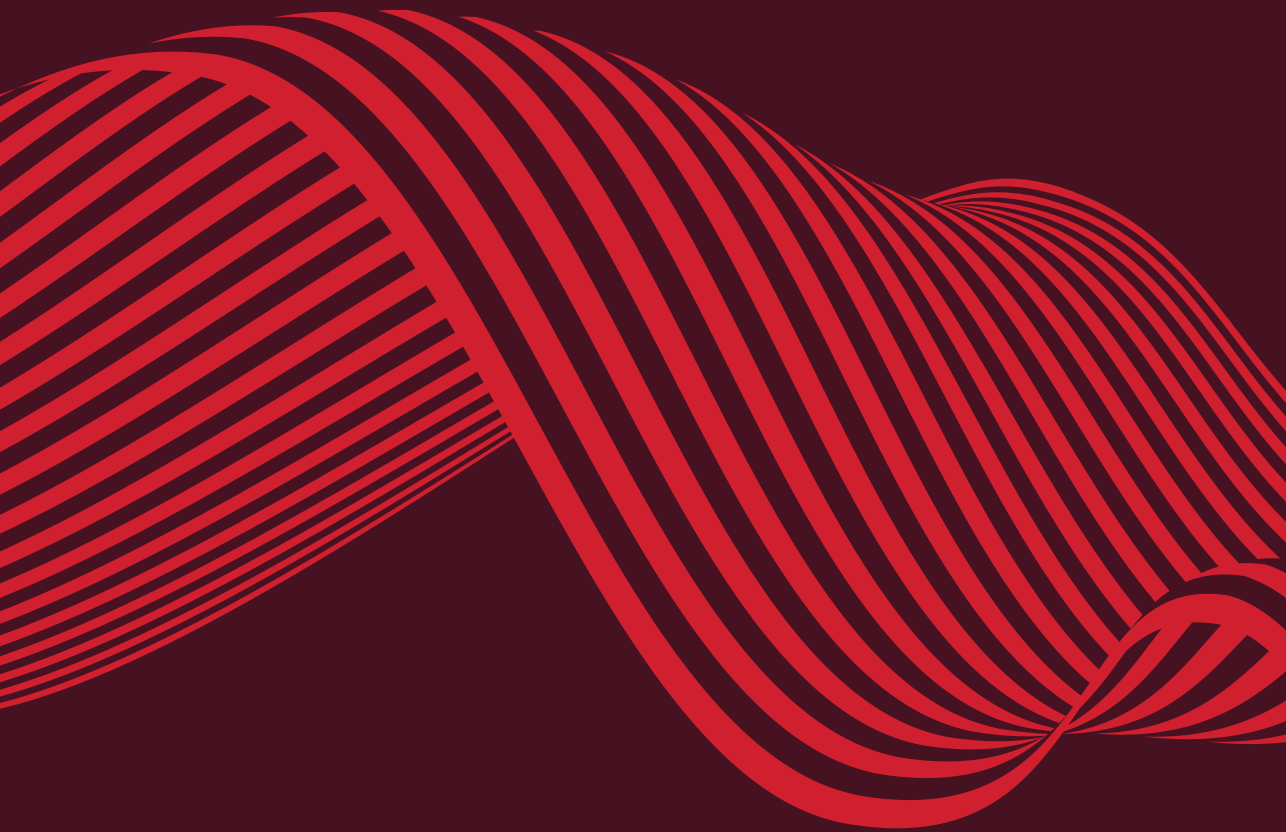


The WIN logo, consisting of the word "WIN" in a bold, red, sans-serif font, tilted at an angle.

Try your luck on our prize wheel located in the Spark Atrium, with a range of fantastic instant win prizes including popcorn, water bottles, chocolate and vouchers.

For terms and conditions visit:  
[www.solent.ac.uk/competitions](http://www.solent.ac.uk/competitions)





Southampton Solent University  
East Park Terrace  
Southampton  
SO14 0YN

T. +44 (0)23 8201 3039  
E. [opendays@solent.ac.uk](mailto:opendays@solent.ac.uk)  
[www.solent.ac.uk](http://www.solent.ac.uk)

 [solentuniversity](https://www.facebook.com/solentuniversity)  
 [@solentuni](https://twitter.com/solentuni)  
 [solentuniversity](https://www.instagram.com/solentuniversity)  
 [solentuni](https://www.youtube.com/solentuni)  
 [Solent University](https://www.linkedin.com/company/solent-university)  
 [@solentuniofficial](https://www.tiktok.com/@solentuniofficial)

**#WeAreSolent**