



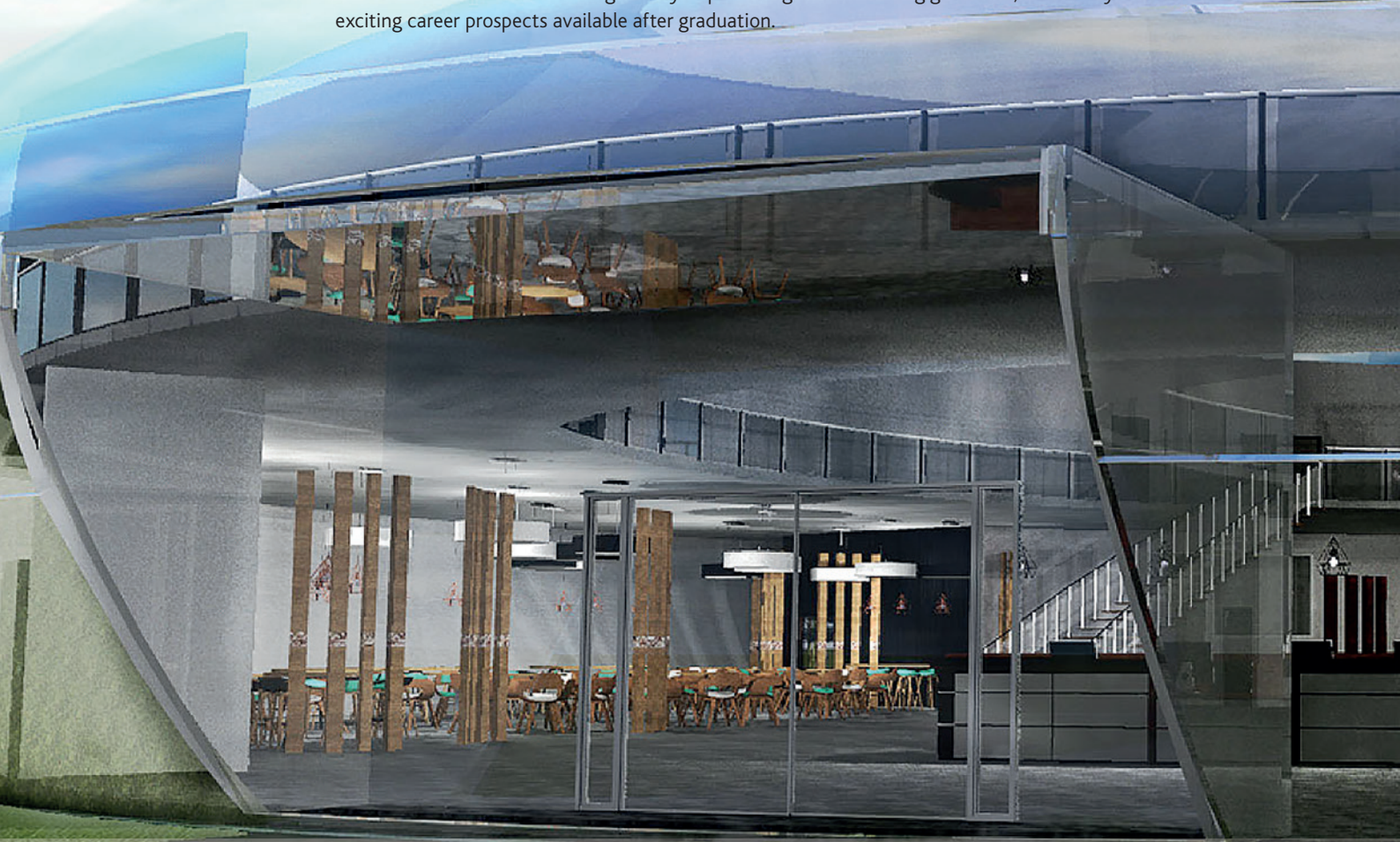
ARCHITECTURE  
AND CONSTRUCTION



# ARCHITECTURE

## AND CONSTRUCTION

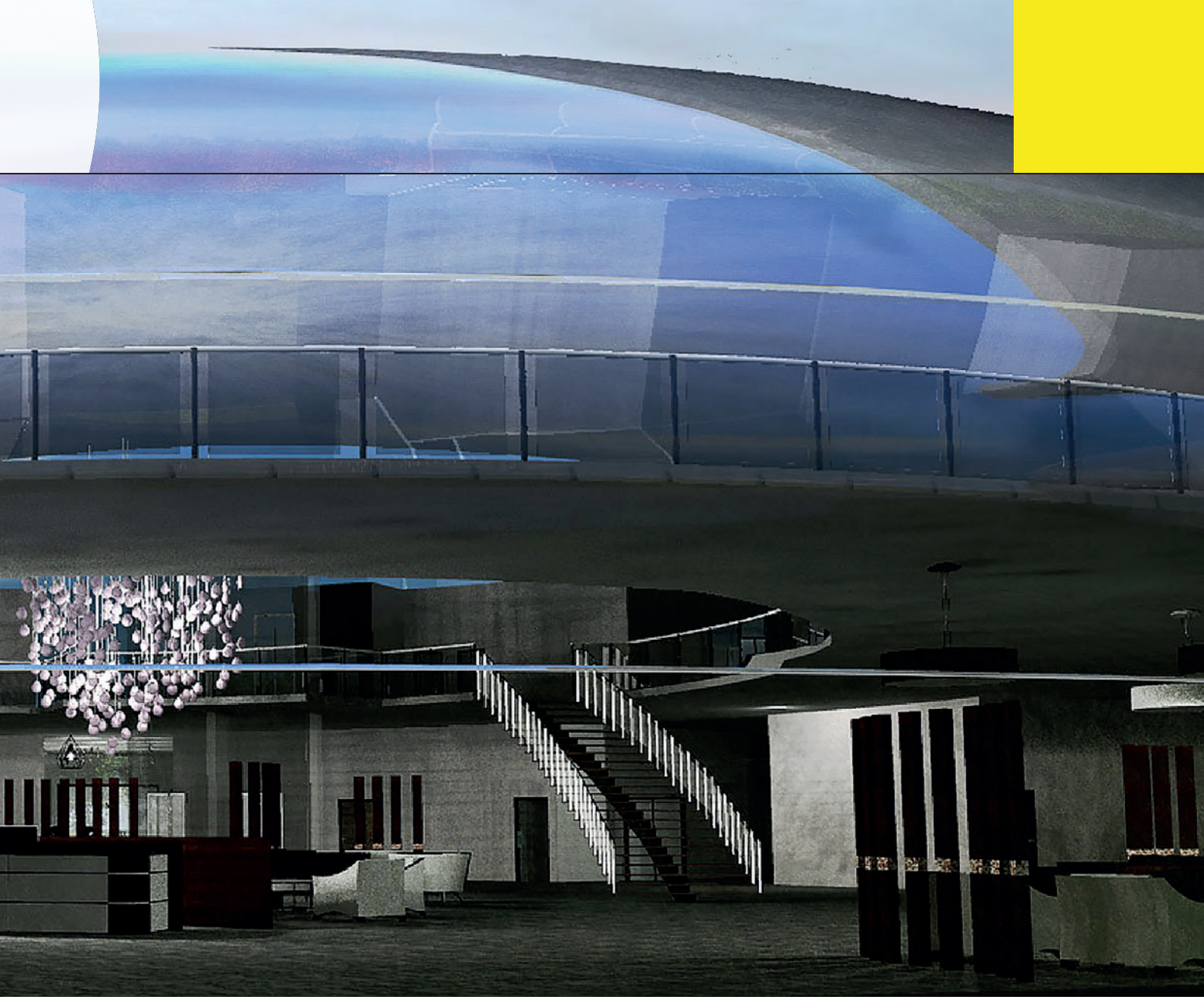
Are you a creative thinker with a passion for technology and design? Our architecture and construction courses have a long history of producing award-winning graduates, with many exciting career prospects available after graduation.



There is a range of careers in the built environment – architectural technologist, interior designer, project manager, quantity surveyor, architectural designer and architectural visualiser. Sound good? You're already committed. So get skilled up.

Our professionally accredited architecture and construction courses are of industry standard and bang up-to-date. It means our graduates are exactly what employers want.





OUR INDUSTRY CONNECTIONS ARE SECOND TO NONE.  
You'll learn with us and you'll learn on the job. You'll build your experience through live briefs, guest lectures and site visits.

WANT PROFESSIONALS TO NOTICE YOU?  
Our graduate showcase gives you that vital networking window and a real opportunity for quality job offers.

# ARCHITECTURE AND CONSTRUCTION

## TAUGHT BY EXPERTS, AND EXTENSIVE LINKS WITH INDUSTRY

- The course team is highly experienced, with vast professional experience and qualifications.
- The team maintains close links with industry – these contacts provide guest lectures, site visits and live case studies, giving you a real-life learning environment and unique research opportunities.

## REAL-WORLD EXPERIENCE

Real-world experience is key. Whatever course you're on, you'll be supported into high-quality, relevant work placements. Our course team is highly experienced, with vast professional knowledge and qualifications. Close industry links foster a real-life learning environment and unique research opportunities.

You could be among our students working with top organisations including:

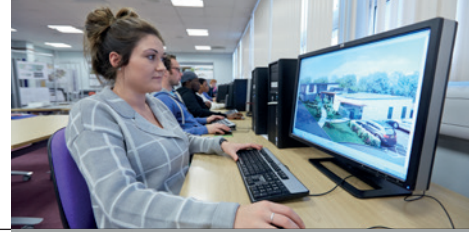
Southampton City Council

HGP Architects

Lyon + Sleeman + Hoare Architects

ADAM Architecture

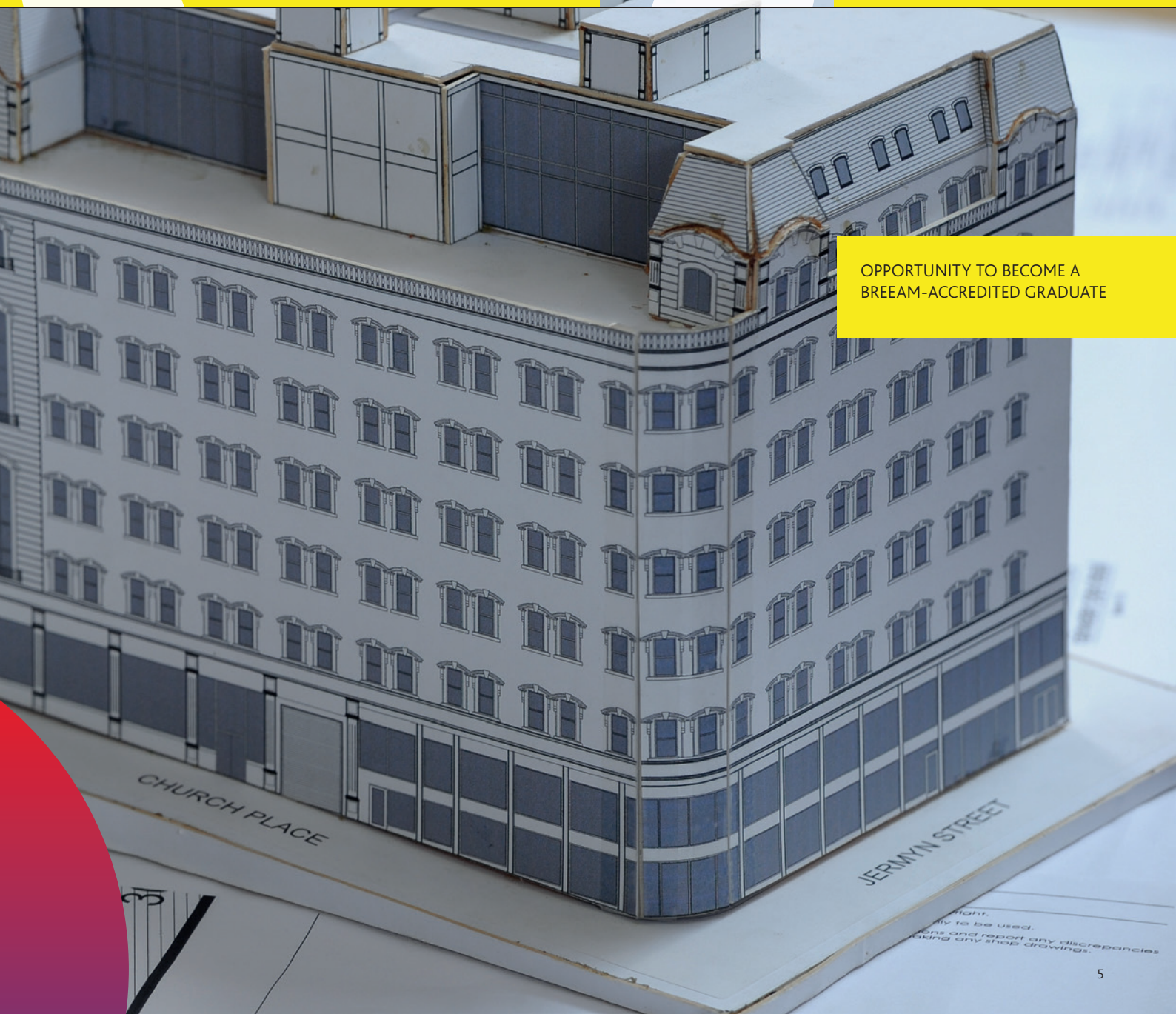
Simpson Hilder Associates





Accreditations by the Chartered Institute of Building (CIOB), the Chartered Association of Building Engineers (CABE), the Chartered Institute of Architectural Technologists (CIAT) and the Society of British and International Design (SBID)

Learn in the built environment studio centre, designed to give the feel of a live studio environment.



OPPORTUNITY TO BECOME A  
BREAM-ACCREDITED GRADUATE

# ARCHITECTURE AND CONSTRUCTION

## SPECIALIST FACILITIES AND EQUIPMENT

Throughout your studies you will have access to, and study in, the architectural technology and interior design studio, or the construction and materials lab. The facilities feature up-to-date software and are designed to mirror the feel of a professional studio environment – allowing for cross-collaboration between courses on multidisciplinary projects.

We provide a stimulating learning environment and access to state-of-the-art resources to help you make the most of your time with us. Flexible spaces, WiFi facilities and learning zones all contribute to our lively and contemporary study environment at Solent.

- Fully equipped architectural technology and interior design studio, laser-cutters, 3D printer and digital cameras
- CAD stations and the latest software: AutoCAD, Revit, Vector Works, Adobe Photoshop, Adobe Illustrator and Google SketchUp Pro.





The architecture sector produced £4.33 billion of gross value added in 2014, a rise of 16.4 per cent from 2013 (£3.72 billion). \*

\* Source: Creative Industries 2014

The value of contracts awarded in the construction industry in August 2017 reached £5.8 billion, based on a three-month rolling average, a 7 per cent increase on the month. \*



# ARCHITECTURE AND CONSTRUCTION

## ABOUT THE CITY

Southampton is a thriving dockland city which continues to attract industry investment. The city's architecture reflects its maritime heritage and its key position as a port for world cruise liners.

The city's exciting architectural developments – the Spark, SeaCity Museum, Westquay, Watermark and the Cultural Quarter – serve a vibrant community.

With large construction companies – Brymor, Trant, Gleeds, Wates – based in Hampshire, Southampton is a great place to study, work and play.

It's a city of Premier League football, world-class sailing and international cricket. Its many pubs and clubs host breakthrough bands and big names. Stadium acts come to the Ageas Bowl, the O2 Guildhall hosts mainstream pop, while festivals are a constant part of our city park life.

The city has great theatre and cinema. It's just opened the swanky Showcase. Independent films are screened at the dockside cinema, Harbour Lights, and there is a summer season of al fresco film.



LESS THAN TWO HOURS  
FROM LONDON BY TRAIN



OVER 42,000 STUDENTS,  
WITH A POPULATION OF  
ALMOST 255,000



180+ PUBS, BARS AND  
NIGHTCLUBS



FIVE CITY-CENTRE PARKS





## APRIL RAPLEY

BA (Hons) Architectural Technology  
Graduated 2017

### TELL US A BIT ABOUT THE COURSE

It allows you to look at the buildability and functionality of a building you're designing and how your choices impact these aspects. The course also has a strong focus on live briefs, to give you an understanding of how the process works in the real world.

### HOW DID SOLENT PREPARE YOU FOR YOUR CAREER?

This course is about more than just building design; it covers specification writing, project management and procurement methods, as well as the technology of construction. It allowed me to show key skills in many areas required throughout the building process.

### FAVOURITE SOLENT MEMORY?

The end-of-year show in my third year. This is an event to showcase our work from the final year to friends and family, as well as industry professionals. Having my work looked at and praised by a complete stranger really made the work I had put in over the three years feel important.

### WHAT'S NEXT FOR YOU?

I am returning to Solent in September 2017 to complete an MSc Sustainable Building Design degree.

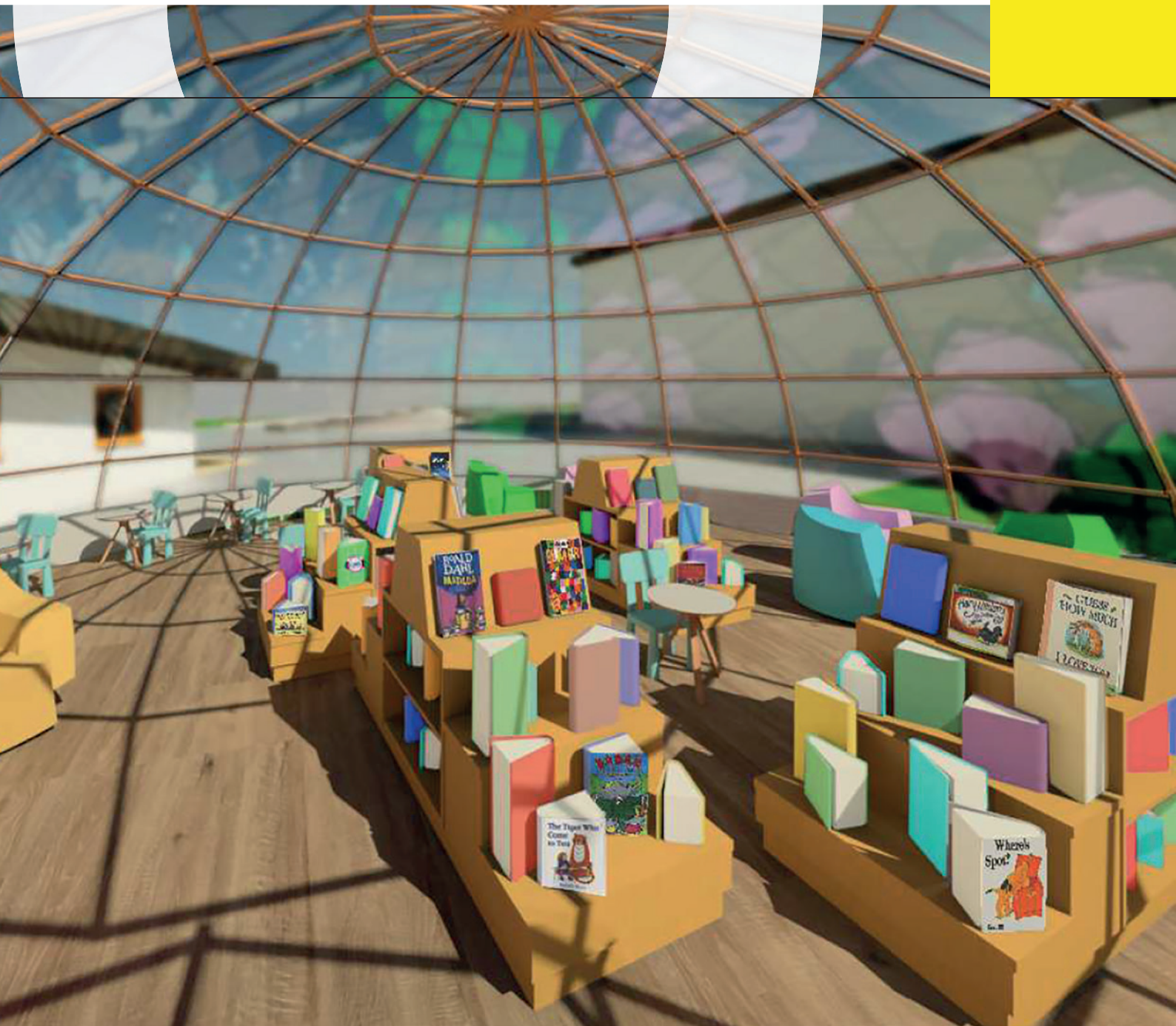
### WHAT TIPS WOULD YOU GIVE TO SOMEONE WANTING A CAREER IN THIS AREA?

Take advantage of any learning opportunity; meet people in the industry and connect with them – this will open so many doors for your career.



THIS COURSE IS FOR YOU IF YOU HAVE A PASSION FOR ALL ASPECTS OF BUILDING DESIGN – FROM INITIAL IDEAS THROUGH TO CONSTRUCTION."







## LIAM FLOREY

BSc (Hons) Construction Management  
Graduated 2007

### TELL US A BIT ABOUT THE COURSE

The course curriculum was specific and relevant to the UK construction sector. The course modules covered a wide range of aspects and in detail, ranging from land acquisition to construction law, technical and even human dynamics (people are always and by far the most important contributor in our industry).

### HOW DID SOLENT PREPARE YOU FOR YOUR CAREER?

The course allowed me to meet a wide range of like-minded people, begin to network and learn to work within effective teams.

### FAVOURITE SOLENT MEMORY?

Too many to remember, but I guess really engaging with the course and applying myself in Years 2 and 3, and seeing the benefits.

### WHAT'S NEXT FOR YOU?

I am currently based in London, working on the Battersea Power Station project as a project manager. In my three years on the project, I have been responsible for the delivery of 350 apartments, five super-prime penthouses and a number of retail and commercial spaces, with a total construction value in excess of £150 million.

I will shortly be joining India's largest real estate developer as Associate Director for Project Management, London.

### WHAT IS CONSTRUCTION TO YOU?

Construction and the built environment change lives, deliver hope and wellbeing, keep us progressive and forward-moving, employ millions of people and, with each project delivery, create an enjoyable and fun process in getting there.

### WHAT TOP TIPS WOULD YOU GIVE TO SOMEONE WANTING A CAREER IN THE INDUSTRY?

- Commit to your career fully.
- Make five years out of the first two.
- Bring an abundance mentality of energy and drive every day.
- Accept mistakes as the best learning opportunities.
- Keep learning and focusing on professional and personal development throughout your career.
- Network well and deliver excellence in everything you do.



THIS COURSE IS FOR YOU IF YOU ARE LOOKING FOR A DIVERSE, EXCITING AND CHALLENGING CAREER PATH WITHIN A PEOPLE-DRIVEN, FAST-PACED AND EVOLVING INDUSTRY."







## HAYLEY HARDING

BA (Hons) Interior Design  
Graduated 2012



### HOW DID UNIVERSITY PREPARE YOU FOR YOUR CAREER?

University taught me the fundamentals I needed for the workplace, and to put the skills I'd learnt into practice. I got to learn about each component that makes up a project, from inception to completion, as well as how a business in this industry might operate. The course allowed me to grow in confidence, especially when presenting my ideas to an audience, something that has been crucial in my career progression and personal growth.

### FAVOURITE SOLENT MEMORY?

Graduating, feeling an overwhelming sense of achievement and relief that I had completed the course that I knew would lead me into the career I always wanted.

### TELL US A LITTLE ABOUT YOUR CAREER STORY SO FAR

After finishing the course in July 2012 and before officially graduating, I was offered a six-week placement with Capita Symonds, with the prospect of becoming a full-time employee. At the end of the six weeks I was offered a full-time job as an accommodation strategy consultant. Two years later I was approached about a position in London with Mace as a workplace designer. I did this role for two and a half years and I feel that's when it really clicked. I knew that being a

workplace designer was what I should be doing in my career – I really enjoyed it. After commuting four hours minimum per day, I decided to get a job back in Southampton which is where I am now, at Spaceway South Limited. I have been here for a year and have just been promoted to design manager.

### TELL US ABOUT WHAT YOU ARE DOING NOW

I work for a company which specialises in design and build for warehouse, mezzanine and office fit-out projects. My role now as design manager is to take a brief from the client and turn it into a visual concept that both the client can understand and the contractor can work from. I produce 2D AutoCAD plans, presentations, mood boards and 3D SketchUp models to convey the ideas and proposals. I then work with our estimators and project managers along the way to ensure a project is delivered on time and within budget.

### WHAT'S YOUR CAREER HIGHLIGHT SO FAR?

My career highlight so far has to be designing the office space for 1,000 staff for the new HS2 HQ offices in Birmingham last year.

### WHAT IS INTERIOR DESIGN?

Interior design is being able to express your personality through helping others see and

understand what they want before they even know what they want – it's being able to bring something new to the party. Design is very subjective but I love the freedom that my job gives me to be innovative and creative.

### WHAT TIPS WOULD YOU GIVE TO SOMEONE WANTING A CAREER IN YOUR INDUSTRY?

Don't be afraid to ask questions or ask for advice. Asking questions and asking for advice outside of the set classes enabled me to learn so much more and to be open to experiences where I could gain further knowledge. For example, I would never have got the placement at Capita had I not shown an interest in building surveying and wanting to know more about the subject. Even though I didn't go down that route, it still opened up so many opportunities for me.



THIS COURSE IS FOR YOU  
IF YOU LOVE A CHALLENGE  
PAIRED TOGETHER WITH  
CREATIVITY."







## GREGG THATCHER

BA (Hons) Architectural Technology  
Graduated 2012

After graduating in 2012, Gregg went on to join Spratley Studios in Henley-on-Thames as an architectural technologist.

A key project he has been involved in is the development of the new Ruskin School of Fine Art building in Oxford. Gregg was entrusted to take the scheme from planning right the way through detailed design, the construction phase, practical completion and beyond, with the project taking a year and a half to complete.

Telling us about his involvement, Gregg says: "It felt very special to have played a key role in the development. Not only to have a building which you can drive past and be proud of, but also to see what a difference it makes to the lives of the building users."

"To see where the clients had come from, having worked so closely with them and their aspirations, and then to hand them the building at the end of the project was a great feeling. Sometimes it seems hard to believe that I went from a first-year student, at 25 years old, to building real buildings. For that I will always be thankful to Solent."

Reflecting on his time as a student at Solent, Gregg adds: "Looking back, the foundation I gained in every subject has been applied in my job role to date and it is these elements which stop you looking extremely stupid on site and avoid costly errors for the design team and client."

"It's easy to think deadlines are not present in the real world. However, the truth is that deadlines in the real world are infinitely worse as it's your reputation and career on the line. As for presentations, they are always going to be there in this industry in one form or another, so the sooner you get used to them the better it will be for you."

And finally, with advice for any student looking to go into the industry, he says: "Pay attention, don't be afraid to ask, work hard, meet your deadlines and the rest will follow."



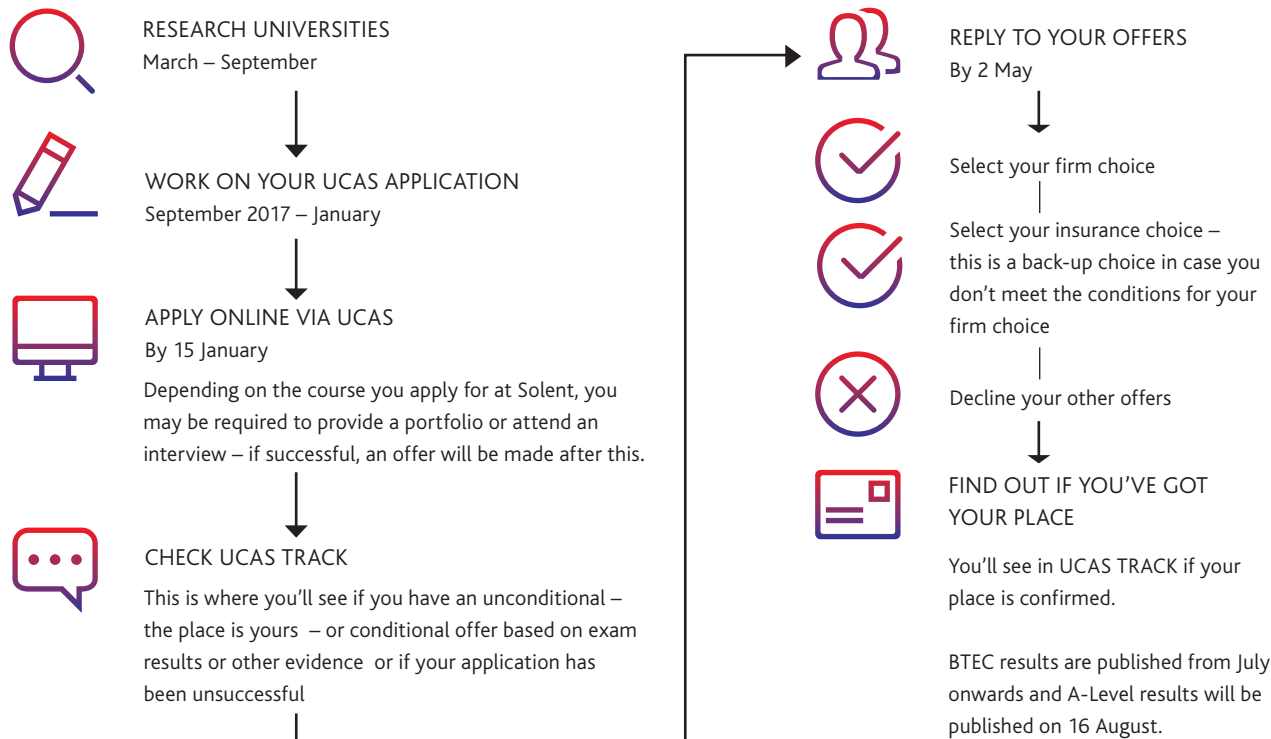
“SOMETIMES IT SEEMS  
HARD TO BELIEVE THAT  
I WENT FROM A FIRST-  
YEAR STUDENT, AT 25  
YEARS OLD, TO BUILDING  
REAL BUILDINGS. FOR  
THAT I WILL ALWAYS BE  
THANKFUL TO SOLENT.”





# HOW TO APPLY

Southampton Solent University code name: **SOLNT** Southampton Solent University UCAS code: **S30**



PREPARE FOR UNIVERSITY IN LESS THAN AN HOUR EACH WEEK WITH OUR TIPS, GUIDES AND QUIZZES.  
[www.solent.ac.uk/52-things](http://www.solent.ac.uk/52-things)



**OUR STUDENT RESIDENCES**  
We have well-equipped student residences, with fantastic study-bedrooms, right in the city centre and only a short walk from the main campus. For more information, visit [www.solent.ac.uk/accommodation](http://www.solent.ac.uk/accommodation)



# ARCHITECTURE AND CONSTRUCTION

UNDERGRADUATE	UCAS tariff points	Work placement year opportunity	Foundation route available	Part-time route available
BA (Hons) Architectural Design and Technology	112	✓	✓	✓
BA (Hons) Architectural Design and Visualisation	112	✓	✓	✓
BSc (Hons) Construction Management	112	✓	✓	✓
BA (Hons) Interior Design	112	✓	✓	

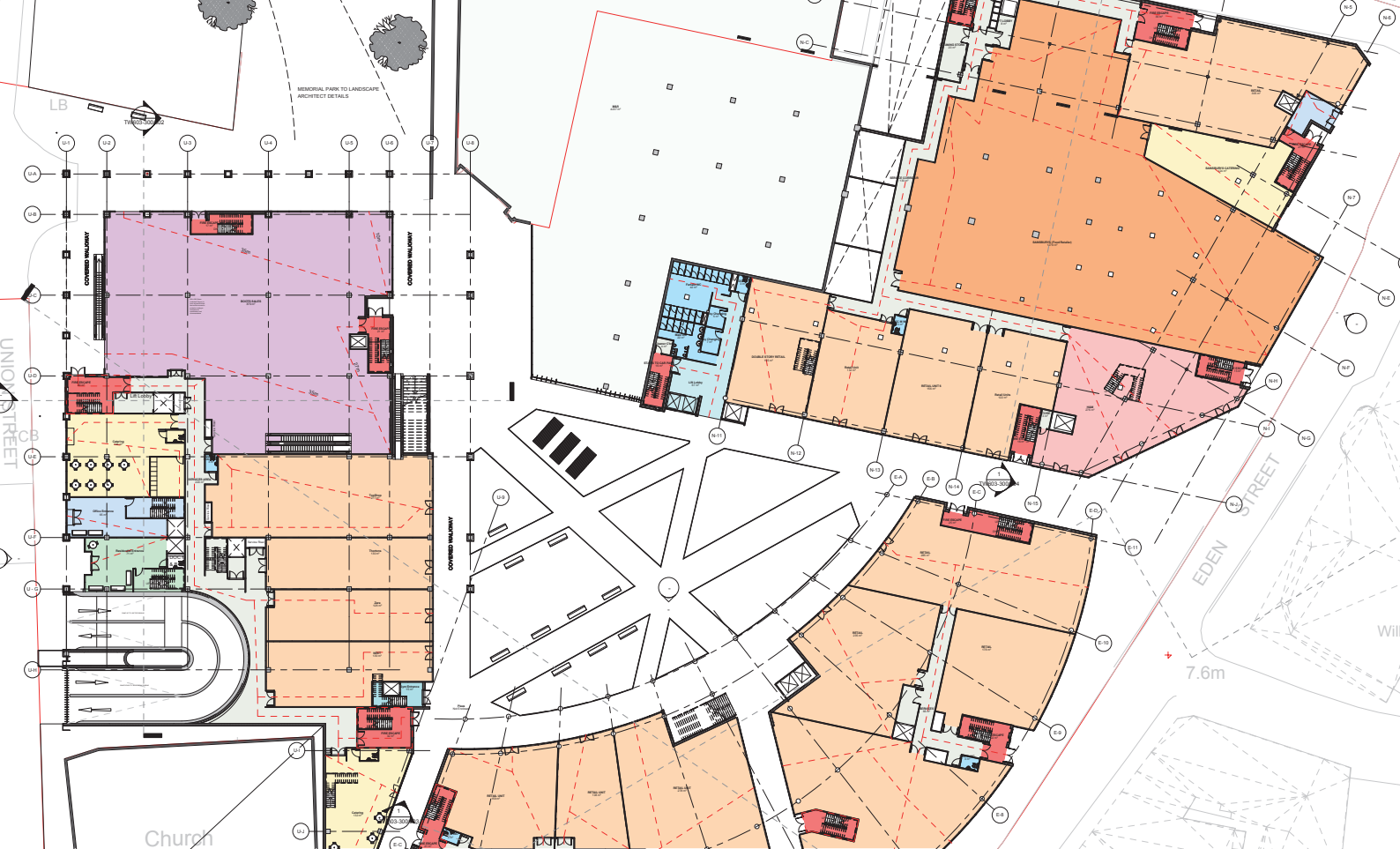
POSTGRADUATE
MSc Advanced Building Simulation
MSc Architectural Project Management
MSc Sustainable Building Design

HNC(s)	UCAS tariff points	Course length
HNC Architectural Technology (Part-time)	16	2 years
HNC Building Surveying (Part-time)	16	2 years
HNC Civil Engineering (Part-time)	16	2 years
HNC Construction Management (Part-time)	16	2 years
HNC Quantity Surveying (Part-time)	16	2 years



## FEES AND FINANCE

Worried about the cost of going to university? There's plenty of support on offer to ensure that financial circumstances don't stop you from gaining a higher education. For more information, visit [www.solent.ac.uk/finance](http://www.solent.ac.uk/finance)



Southampton Solent University  
 East Park Terrace  
 Southampton  
 SO14 0YN

T. +44 (0)23 8201 3000  
 E. ask@solent.ac.uk

[www.solent.ac.uk](http://www.solent.ac.uk)

