

**Southampton
Solent**
University

www.solent.ac.uk
023



Architecture, interiors and construction

2025 undergraduate courses



Contents

Why Solent	2
Research at Solent	3
A new way of life	5
Real-world experience	6
Specialist facilities	8
Our great city	10
BA (Hons) Architectural Design and Technology	12
Industry experience	14
BSc (Hons) Construction Management	16
BA (Hons) Interior Design	18
SBID Centre of Excellence	21
BA (Hons) Interior Design Decoration	22
Interior design live briefs	24
BSc (Hons) Quantity Surveying	26
Course list	28

Gold-standard teaching and opportunities

Our focus on practical knowledge and employment opportunities is just one of the reasons we're rated gold in the latest Teaching Excellence Framework (TEF) review from the UK government Office for Students.

TEF recognises excellence in teaching, learning and achieving positive outcomes for students - with gold status awarded only to universities offering outstanding student experience and career outcomes.



Overall: **Gold**

Student experience: **Gold**

Student outcomes: **Gold**

Teaching Excellence Framework

Are you a creative thinker with a passion for technology and design?

Our architectural design, interiors and built environment courses have a long history of producing award-winning graduates, with many exciting career prospects available after graduation.

There is a range of careers in the built environment – architectural technologist, interior designer, project manager, quantity surveyor and architectural designer. Our professionally accredited architectural design, interiors and construction courses are of industry standard and bang up-to-date. It means our graduates are exactly what employers want.

Why Solent?

Professional accreditations – Our courses meet the standards set by employers, and this enables you to take steps towards gaining professional qualifications even before you've graduated. Accreditations include the Chartered Institute of Building (CIOB), the Chartered Institute of Architectural Technologists (CIAT) and the Society of British and International Design (SBID).

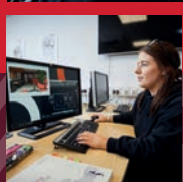
Industry connections – The academic team maintains close links with industry, and these contacts provide guest lectures, site visits and live case studies, giving you a real-life learning environment and unique research opportunities.

Industry-standard facilities – Throughout your studies you will have the opportunity to use a range of industry-standard facilities to support your learning (See page 9).

Annual showcase – In your final year of study, with attendees from industry, our showcase gives you that vital networking window and a real opportunity for quality job offers.

Live briefs – Throughout your studies you will have the opportunity to work on a range of live briefs, giving you that vital real-world experience before you even graduate.

Highly experienced course teams – Our lecturers and technicians have a range of professional qualifications and industry experience which they bring into their teaching.



Research at Solent

At Solent, research isn't just for academics, or for postgrads and PhDs. Research is for everyone, from undergrad up.

Studying with us, you're part of an active research community – not just learning from researchers in every field, but incorporating that research into your studies.

The way we teach, the practical projects and applied theory you'll be studying? It's informed by the latest research, inspiring and encouraging you to ask questions, investigate problems, propose solutions and create new knowledge. And ensuring you'll be at the forefront of industry thinking when you graduate.

Along with the habits, thinking processes, and curiosity to become a learner for life – evaluating research and industry developments throughout your career – you'll have plenty of opportunities to develop your own research as well, or to become part of a larger project.

Solent students have co-authored papers, worked hand-in-hand with industry on knowledge exchange projects, crewed research films, and even presented their work at the UK Parliament.

It's a chance to deliver real-world impact in our communities and our society – and it's open to everyone.



Our areas of focus

Across all of our courses we deliver a unique curriculum shaped around inspiring industrial partnerships, ground-breaking professional insights, knowledge exchange and research – divided into four key areas of focus:

- **Environment and engineering**
Safe and sustainable energy, transport and material systems.
- **Social research and policy**
Improving individual and community wellbeing through practice, provision and policy.
- **Human function and health**
The evaluation of human function, health and the social context.
- **Media, culture and the arts**
Communication, cultural and media studies, creative arts and practice.

Master's by research – MRes

If you're interested in a career in research after your undergraduate studies, you may want to consider our MRes. Through this postgraduate research degree, you'll develop knowledge and skills in research methods, plan and lead your own research project, and have an opportunity to further develop your research career for a range of different sectors. You will complete a series of real-world tasks, such as preparing funding applications, presenting research, and writing journal articles. This creates a portfolio of work for you to take forward and is a good foundation for PhD study. You might even get a chance to publish your work.

A new way of life

There's so much more to uni life than lectures and learning.

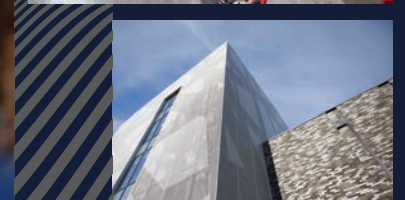
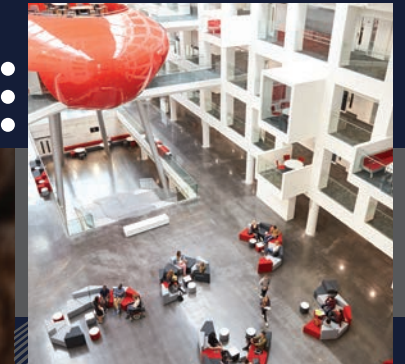
You might be moving away from home for the first time, free to decide how you want to spend your time and money, and exploring new connections and new interests. It will probably feel both thrilling and a little daunting.

But the Solent campus is pretty compact compared to other universities, and it's designed around some lovely social spaces and cafes, which makes everything easier and more enjoyable.

So stick around between your lectures and grab a coffee. You'll be mixing with students from different backgrounds and courses.

And life on campus is strongly informed by sustainability. We're working towards a 33 per cent carbon reduction target by implementing a wide range of energy-efficiency projects across our campuses, while our flagship Spark building is BREEAM-rated 'excellent' for sustainability.

Take a virtual tour of our campus – www.solent.ac.uk/virtual-tour





Real-world experience

Whatever course you're on, you'll be supported by our highly experienced course teams, with access to excellent resources to develop your skills and apply them in a design studio environment.

And you'll have plenty of opportunities to get real-world experience while you study; recent students have worked at:

Balfour Beatty
Barratt Homes
Morgan Sindall
McCarthy Stone
Vistry

Lyon + Sleeman + Hoare Architects
ADAM Architecture
Simpson Hilder Associates
Linden Homes
Dulux
IKEA
Bo Concept
BrightSPACE Architects
HPW Group
ALP Architects

Specialist facilities and equipment

Throughout your studies you will have access to, and study in, a range of up-to-date facilities including the architectural technology and interior design studio, the construction and materials lab and the interior design decoration studio – as well as a range of modern and flexible classroom spaces.

Architectural technology and interior design studio

This studio features up-to-date software and is designed to mirror the feel of a professional studio environment, allowing for cross-collaboration between courses on multidisciplinary projects.

Software includes: AutoCAD, Revit, Vector Works, Adobe Photoshop, Adobe Illustrator, Google SketchUp Pro, VRay, Lumion, Podium, Bluebeam and others.

Interior design decoration studio

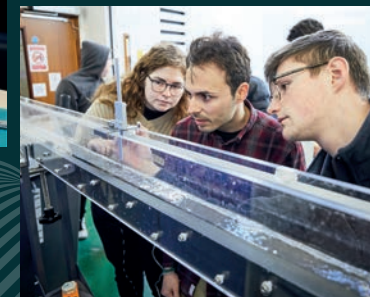
This features specialist equipment for surface decoration, spatial design and interior styling, including a digital laser cutter and industry-standard photographic studios.

Construction and materials lab

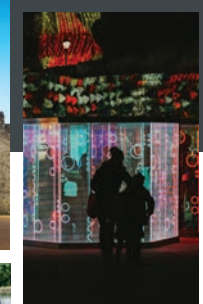
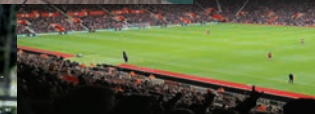
A purpose-built lab for testing various construction materials using state-of-the-art equipment.

The Spark

Our award-winning teaching and learning building, the Spark, is the proud centrepiece of our campus – and everything about it is centred around you and your learning. Our lecture theatres include at-seat charging sockets for laptops and tablets, while the latest lecture-capture technology uploads to our virtual learning environment.



Our great city



With a population of over 250,000 – including 46,000 students – Southampton is a thriving city that has recently had a £1.6 billion injection of investment. The city's architecture reflects its maritime heritage and its key position as a port for world cruise liners.

With large construction companies – Mace, Brymor, Trant, Gleeds and Wates – based in surrounding Hampshire, Southampton has plenty of opportunities for work experience, or when you graduate. And it's a great place to study, live and play.

It's a city of football, world-class sailing and international cricket. Its many pubs and clubs host breakthrough bands and big names. Stadium acts come to the Utilita Bowl, while the O2 Guildhall hosts mainstream pop, and festivals are a regular part of our city park life.

The city also has great theatre and cinema. It has recently opened the swanky Showcase, while independent films are screened at the dockside cinema, Harbour Lights, and there is a summer season of al fresco film.

BA (Hons)

Architectural Design and Technology

UCAS tariff: **104–120**

Course page and UCAS code: www.solent.ac.uk/ADT1

- Develop professional skills using our industry-standard hardware and software such as sketching and computer-aided drawing.
- You will work on projects with real clients and employers.
- Sustainability is embedded in the curriculum with modules in sustainable environmental design and building information modelling (BIM).
- Showcase your final-year projects to employers and the public at our end-of-year summer show. Students have, in the past, secured graduate employment as a result.

Taught by a dedicated and well-qualified team, the architectural design and technology course is professionally accredited by the Chartered Institute of Architectural Technologists, meaning that the curriculum meets the specific needs of the architectural technology industry.

The course explores three branches of the fascinating architectural technology industry – design, technology and professional practice – and the curriculum equips students with a strong grounding in architectural design, construction technology, technical design and professional practice.

98%
positivity score for
teaching on the course
(NSS 2024)

Our graduates now work at:

ALP Architects
Lyon + Sleeman + Hoare Architects
ADAM Architecture
Simpson Hilder Associates
BrightSPACE Architects, and more



Edward Kercher

Architectural Technologist (ACIAT),
ADAM Architecture

BA (Hons) Architectural Technology, 2017

Tell us a bit about your role at ADAM Architecture.

I work directly with the project director and team to develop, manage and control the technical construction of a variety of projects covering the residential and commercial sectors. I have lots of experience helping to manage and design traditionally designed projects at all kinds of building/construction scales. I work closely with all of the consultant team, client and contractor (usually from RIBA stages 4–6), making sure the projects are delivered within the agreed programme and budget.

What do you enjoy most about working in your industry, and what are the biggest challenges?

The best part about working in architecture is that we create something physical that, if designed and constructed well, will last for generations to come. The fulfilment that you get at the end of a project, knowing that you played a part to produce a beautifully designed and executed building, makes the hard work worth it. We are all constantly using buildings every day of our lives, and knowing that you're a part of the construction of something so fundamental to life is incredible.

How do you feel your studies at Solent helped prepare you for your career?

Solent University gives you the foundations of knowledge to build a solid career within the construction industry. From units in construction to building industry programme training, law-dispute resolution and much more, every part of the course sets you up to be fully prepared to join the building industry as a competent, confident and informed practitioner. I would highly recommend the course to friends and family and do so regularly – the course leaders and access to up-to-date resources make it an enjoyable experience.



What advice would you give to students wanting to follow in your footsteps?

If I were to speak to myself after I graduated I would say get ready to carry on with the learning curve because it doesn't stop at university. Also, make sure that everything you do, produce and issue is to the highest standard. The primary attribute that an architectural technologist needs to perfect is his or her ability to notice the smallest discrepancies and mistakes in drawings before they're sent out to the wider team.

What's coming up for you?

I am currently working closely with a colleague at ADAM Architecture and Southampton Solent University to write a brief for students whereby we will be involved in regularly overseeing the students' work within the first-year final project module. We are excited to see how the first year plays out and what designs the students produce. Solent and ADAM Architecture have had a long-standing relationship which we hope flourishes into the future, creating lots of exciting opportunities for the students.

Industry experience

Students on BA (Hons) Architectural Design and Technology have a range of opportunities to gain real-world experience throughout their studies, thanks to a range of live briefs with industry.

Recently this has included a project with Hampshire County Council, designing a 100 per cent sustainable flexible space for learning and engagement – with a primary focus on a formal education offer – for Lepe Country Park.

This live project presented an exciting opportunity to students, enabling them to design an environmentally friendly and sustainable learning centre to replace an outdated and ineffective temporary education building at Lepe that had to be removed by 2022. Students were encouraged to respect the history of its location in their designs and to capitalise on the amazing benefits and vistas of the coastal setting at Lepe.

As part of the project, students were required to present their ideas to Hampshire County Council and Lepe Country Park, offering them the opportunity to gain real-world experience of a client pitch. Final-year student Jack Dudley said of the project: "The thing I've enjoyed most about this project was working with other people, as we were able to see other points of view. There was also a genuine passion for the project, and when we put it all together and felt it could really work in the real world, it gave us a great sense of satisfaction and pride."



“It is a great opportunity to get students to generate ideas for a client even before they engage with design teams.”

Throughout the project students worked in conjunction with BrightSPACE Architects, who critiqued their work and supported them in preparing designs that met the client's brief. Dai Hannaford, Senior Associate at BrightSPACE, said of the project: "We have been working with Solent students for almost 10 years now, and really enjoy it because the students are so willing to listen and learn. This particular project has been really exciting as the students came up with many ways to answer the brief. What's been really nice to see is that the students are pushing themselves to come up with new ideas as well."

Dr Monkiz Khasreen, Course Leader for BA (Hons) Architectural Design and Technology, said of the project: "It is a great opportunity to get students to generate ideas for a client even before they engage with design teams. This maximises the learning benefits for our students and makes them see the value of real-world learning."



BSc (Hons)

Construction Management

UCAS tariff: 104–120

Course page and UCAS code: www.solent.ac.uk/CM01

- You will use a range of specialist facilities, including construction laboratories, a dedicated drawing studio and a range of levelling/surveying equipment (total stations).
- Our course team is led by qualified professionals with extensive industry experience, enabling you to learn from real-life case studies and examples.
- Guest speakers range from directors of local and national construction companies to representatives from government bodies.

Solent's Chartered Institute of Building (CIOB) – accredited construction management degree is led by qualified professionals with extensive industry experience. Throughout the course you'll learn both the technology of building and process management.

You'll get to grips with the economic aspects of a project and the industry's legal framework, while extensive industry involvement ensures you experience the most up-to-date technology and management techniques available. You'll also develop valuable industry skills and gain first-hand experience on this practical and vocational degree. Employability is embedded into the course, and employers are regularly involved in the delivery and assessment of projects at all levels.

100%

positivity score for
teaching on the course
(NSS 2024)

Our graduates now work at:

Balfour Beatty
Bouygues
Barratt Homes
Morgan Sindall
Goddards



Megan Churcher

Quantity Surveyor, Kier Construction

BSc (Hons) Construction Management, 2021

Why did you decide to study this course at Solent?

I started my career in construction in 2015 and when I started I had never heard of a quantity surveyor before. With the support of my employer I decided to further my knowledge of the job and the world of construction by going to university. I knew Solent had a very good quantity surveying and construction management course from speaking to people I work with, so I looked on the Solent website for more details and applied. I started my HNC in quantity surveying that September and graduated in 2017. Since then I have pushed myself further to receive my BSc in construction management. For this, I stayed with Southampton Solent University and continued to receive wonderful support from the lecturers who understand your needs and aspirations, and will go above and beyond to ensure you walk away from the University proud of what you have achieved and ready to succeed in your career.

I left Solent in summer 2021, thankful to all the wonderful lecturers who supported me.

What was your favourite part of the course, and what were the biggest challenges?

My favourite part of the course was meeting like-minded people from all different backgrounds within construction. It was so interesting how we were all able to learn from each other and expand our knowledge and skills together. I met some wonderful people who helped me through the stressful moments, and we all pushed each other to the finishing line.

“This course is for you if you are young or old, male or female, whether you just want to challenge yourself or to better your knowledge of construction to further your career. Don't let anyone or anything stop you from achieving your dreams!”

How did you find the balance between full-time work and studies?

My tip for those who are looking to do part-time studies while working full-time is to schedule your time! Every Sunday I would sit and plan the week ahead – whether it is work or fitness or assignments or revision, have time slots for it all and stick to it as best you can during the week. By doing that I was able to find the right balance of work/study while still doing all the other things I enjoy, such as seeing friends and doing my fitness classes. Also, don't be too hard on yourself if it doesn't always go the way you planned – keep your head high, keep going, try your best and that is all anyone can ask of you. And make the most of your time at Solent because five years went by so fast!

What was the biggest highlight of your studies?

The highlight of my studies was proving to myself that I can do it if I put my mind to it. Anyone who knows me will tell you that my history of education is not the best, but I got an opportunity at 18 and since then I have worked hard at it to better myself and prove that I am capable of anything I put my mind to.

Also, being able to make a change – women in construction are few and far between, especially young women. So, to be able to say that I am one of them and am paving the way for future women to join the industry is a huge highlight from the past five years.

BA (Hons)

Interior Design

UCAS tariff: 104–120

Course page and UCAS code: www.solent.ac.uk/ID01

- Solent is an SBID Centre of Excellence, making us a central hub for interior design professionals in the south-east.
- You will study in a modern studio space with facilities and software including CAD stations, Revit, Vector Works, Adobe Illustrator and SketchUp Pro, as well as both 3D and large format scanners.
- Gain real-world experience and work on projects for clients, thanks to the team's industry links.
- The course has connections with staff from several New York-based interior design schools who have previously delivered guest lectures and studio crits.

This interior design programme blends aesthetics and technology, asking students to use their design, research and problem-solving skills to create amazing indoor spaces. Real-world learning is at the heart of this course, delivered through close association with industry using, where possible, live briefs and employer input to help students secure roles in industry.

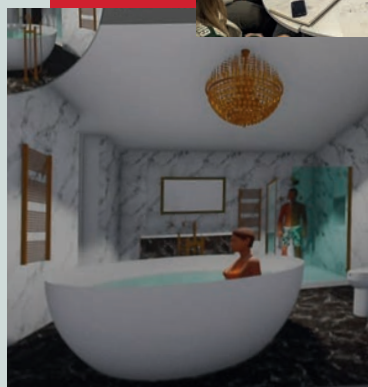
Throughout the course you will be able to combine creativity with technical skills to help you understand, design, visualise and make interior spaces in domestic, retail, workplace, hospitality and commercial sectors. The course emphasises on the architectural elements of interior design, where you will learn the principles of space planning, functionality and user experience/journey, as well as sustainability, wellbeing, material selection, aesthetics and professional practice within an interior setting.

98%

positivity score for
learning resources*
(NSS 2024)

Our graduates now work at:

Morgan Lovell
Kelly Hoppen Studio
Hello Flamingo
Porcelanosa
BoConcept
Plus, further study at RCA



“This course is for you if you have a passion for design and want to turn your interest in interior architecture into a living.”

Tanya Lippuner

Founder, Managing Director and Lead Designer, Vivus Interiors

BA (Hons) Interior Design, 2021

Tell us a bit about your company and what a typical day looks like for you.

A typical day involves managing our various projects from concept to completion, delivering specifications to contractors/architects and clients, meeting tight deadlines, site visits and client meetings, as well as dealing with enquiries and quoting for new work. Key to success is listening to and fully understanding the client's needs.

What do you enjoy most about working in interior design, and what are the biggest challenges?

I love that the projects are so varied – we enjoy working with different styles and meeting all the requirements on the projects. Working on commercial projects is very different to residential – both have their benefits and challenges, but are equally rewarding.

How do you feel your studies at Solent helped prepare you for your career in interior design?

My studies helped me feel confident, when leaving university, to start up my own business and deliver plans, visuals and design proposals to clients, as well as working alongside other design and build professionals in the industry.



What advice would you give to students who want to follow in your footsteps?

My advice would be to get as much project experience as early as possible (start while you are studying), be self-critical and reflective, always explore what you can do better, keep learning, be accurate in your work, pay attention to detail, communicate as much as possible, and be open-minded and adaptable. It is also very useful to be skilled in website design and image-led social media to promote your work and company.

What's coming up next for you professionally?

We have just completed a very exciting restaurant on a lightship in Hampshire, are currently working on a design for a 41-bedroom seaside hotel on the Isle of Wight, and have many residential projects running alongside.

* Across our BA (Hons) Interior Design and BA (Hons) Interior Design Decoration courses



SBID Centre of Excellence

Solent University is a Society of British and International Design (SBID) Centre of Excellence for both BA (Hons) Interior Design and BA (Hons) Interior Design Decoration.

Solent was one of the first institutions in the UK to be awarded this prestigious selection which places the University as a central hub for interior design professionals in the south-east.

Diane Celella, President of SBID, explains why Solent stood out to receive the accreditation: "It was a very easy decision to choose Solent. We weren't just looking at excellence in teaching and results, but also in how they work with industry, and Solent does this in a really impressive way."

Sarah Radif, Head of the Department of Science and Engineering, said: "Being recognised as an SBID Centre of Excellence will have a massive impact on both students and staff. Plus, to be recognised as among the best in the sector will further enhance Solent's reputation, nationally and internationally, and make our graduates highly regarded by industry."



Diane continues: "It's important that students work with designers in practice. SBID Centres of Excellence are intended for all designers to work and network together. Hopefully, students may meet their future employers!"



BA (Hons)

BA (Hons) Interior Design Decoration

UCAS tariff: 104–120

Course page and UCAS code: www.solent.ac.uk/IDD1

- Solent is an SBID Centre of Excellence, making us a central hub for interior design professionals in the south-east. Our course is also accredited by SBID.
- The opportunity to work on a range of live briefs. Recent projects have been with John Lewis of Hungerford's, Kurt Geiger, Palace House, (Beaulieu Estate), The Clothes Show and Linden Show Homes.
- Study under the guidance of an expert teaching team who are experienced professionals with a wealth of interior and lifestyle industry experience to share.
- Access to a range of specialist equipment for surface decoration, spatial design and interior styling. These include a digital laser cutter and industry-standard photographic studios.

Whether you're interested in interior design, surface decoration, textiles or interior styling, Southampton Solent University's interior design decoration programme will help you to improve your practical skills and begin a unique career in this exciting creative industry. With an expert teaching team and a strong emphasis on the decorative elements of the interior and lifestyle industry, you'll gain the practical experience and support required to create a professional portfolio and get your career off to the ideal start.

The course places a strong emphasis on gaining hands-on experience, and students are encouraged to work on industry-led projects.

Through the course team's strong industry links, past students have had the opportunity to gain self-directed work experience in both commercial and domestic design-led environments.

98%

positivity score for
learning resources*
(NSS 2024)

Our graduates now work at:

Tro
Harrods
Shelton Fleming
Neptune
Claydon Reeves
Fortnum and Masons



|||||

* Across our BA (Hons) Interior Design and
BA (Hons) Interior Design Decoration courses



Jason Livingstone

Mid-weight Store Designer, Kurt Geiger

BA (Hons) Interior Design Decoration, 2017

How did Solent prepare you for your career?

Solent provided first-class teaching, access to state-of-the-art equipment/technology and live real-world experiences throughout the degree.

Favourite Solent memory?

The moment when my friends and I handed in our final major project. This was the accumulation of three years' worth of projects, essays and presentations alongside laughter, tears and friendship. It was a huge achievement personally as I am someone who has previously struggled with education.

Tell us a little about your career story so far.

Luckily, I am one of a few who can say they got a position before they attended their graduation. I started out in the industry at Ted Baker London, working with some of the world's finest department stores such as Harrods, Selfridges and Bloomingdales, before moving on to global store design in locations such as South Africa.

Recently I moved to luxury retailer Kurt Geiger London to join its in-house design team working on showrooms, concessions and stores globally. I work across multiple projects at once, designing, sourcing, project managing and styling our stores.

What is interior design decoration?

This specialty degree gives a fundamental understanding of the process of design from concept to completion, encompassing everything from decoration to spatial planning.

What tips would you give to someone wanting a career in your industry?

Pick the right degree for you – a course that fits your needs, personality and interests. Without a fundamental understanding of the industry and a solid degree course, I think it would be difficult to gain access to the industry or sustain a long career. Passion for what you do is something you can't fake – you have to absolutely love it.



Interior design live briefs

As a student on BA (Hons) Interior Design Decoration or BA (Hons) Interior Design you will have the opportunity to work on a range of exciting live briefs with industry professionals. This experience enables you to build up vital work experience before you even graduate, meaning when you finish your studies you can hit the ground running. Some recent examples of live briefs include:

BA (Hons) Interior Design

Morgan Lovell – Students were asked by Morgan Lovell to develop innovative office layouts that met their client's needs. It was to include unique ideas for interior finishes and bespoke joinery.

PPHE (Park Plaza Hotels) – Students were challenged to create a windowless hotel, and include the reception, bar/lounge area and bedroom suites. Exciting ideas regarding lighting features and innovation were explored.

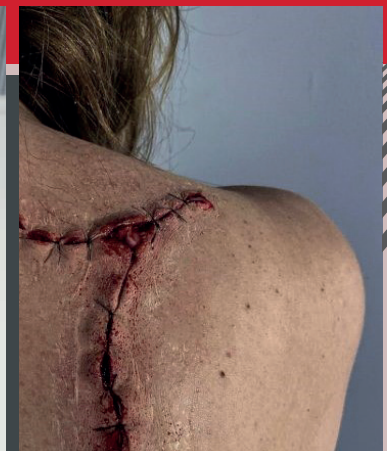
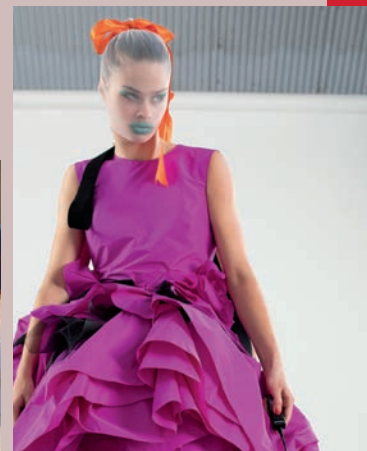
BA (Hons) Interior Design Decoration

Lord Montagu (Beaulieu Estate) – Students had the fantastic opportunity to work with Lord Montagu to design a nursery bedroom and bathroom with bespoke surface designs for Palace House Beaulieu. Lord Montagu then selected two students' work and they have subsequently developed their ideas further for the bedroom and bathroom respectively.

John Lewis of Hungerford – This was a live project sponsored by John Lewis of Hungerford where the student designed a kitchen for a real site and client. The company selected a winner who then received £500 of Apple vouchers.

Linden Homes – Students worked on a live brief with Linden Homes to design the ground floor of a show home, including spatial layouts and creating unique surface patterns for bespoke wallpapers, screens and tiles.

Kurt Geiger – Students worked on a live project with Kurt Geiger to design a new retail concept store for its London site.



BSc (Hons)

Quantity Surveying

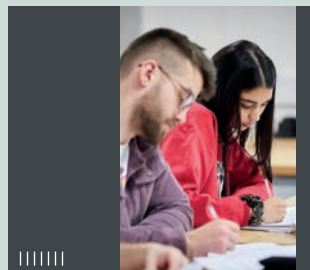
UCAS tariff: **104–120**

Course page and UCAS code: www.solent.ac.uk/QS01

Through this degree you'll gain a firm understanding of how to effectively manage all elements relating to cost on a construction project, equipping you for an exciting and varied career in construction upon graduation.

You'll study a range of areas including estimating to win a project bid, analysing cash flow and effectively managing contracts.

Throughout your studies you'll have the opportunity to use industry-standard software, modern construction labs, a dedicated drawing studio and a range of levelling/surveying equipment (total stations and automatic levels).



Suitable roles for graduates include:

Assistant quantity surveyor, assistant estimator, assistant commercial manager, assistant contracts manager.



Paige Gough

Assistant Quantity Surveyor, Barratt Homes (BDW Southampton)

BSc (Hons) Construction Management
(Quantity Surveying Pathway), 2022

Tell us a bit about your role and what a typical day looks like for you.

No two days are ever the same in my role; however, a typical day would be managing the commercial aspect of sub-contractors who are currently on live projects that I am responsible for. This might include payments, variation agreements, price increases/decreases or evaluating their workmanship/labour. On projects which are at the tender stage I would either be requesting tender quotations or comparing the ones I have received to ensure fair and competitive tendering, and then awarding packages to the chosen sub-contractors.

What do you enjoy most about your role, and what are the biggest challenges?

Negotiation of pricing with sub-contractors is one of the things I enjoy most, and also the fact that I get to speak to such a variety of people day to day. One of the biggest challenges is the mitigation of impact from price increases/inflation/market fluctuations so that the project is still being delivered within the project margins desired/targeted.

How do you feel your studies at Solent helped prepare you for your career?

I gained valuable experience and skills throughout the course which I can apply to my current work, as well as learning discipline, how to meet target deadlines and also a strong work ethic to ensure I am achieving the most I possibly can.

What advice would you give to those wanting to follow in your footsteps?

If you want to work within a profession that is complex and diverse, then construction is for you – every day there is something different to manage and something new to learn!

Course list

Undergraduate courses	UCAS tariff points	Foundation Year	UCAS code
BA (Hons) Architectural Design and Technology	104–120	Y	ADT1
BSc (Hons) Construction Management	104–120	Y	CM01
BA (Hons) Interior Design	104–120	Y	ID01
BA (Hons) Interior Design Decoration	104–120	Y	IDD1
BSc (Hons) International Construction Design and Sustainability (Top-up)	*	NA	ICDS
BSc (Hons) Quantity Surveying	104–120	Y	QS01

* Please contact admissions for entry requirements on admissions@solent.ac.uk

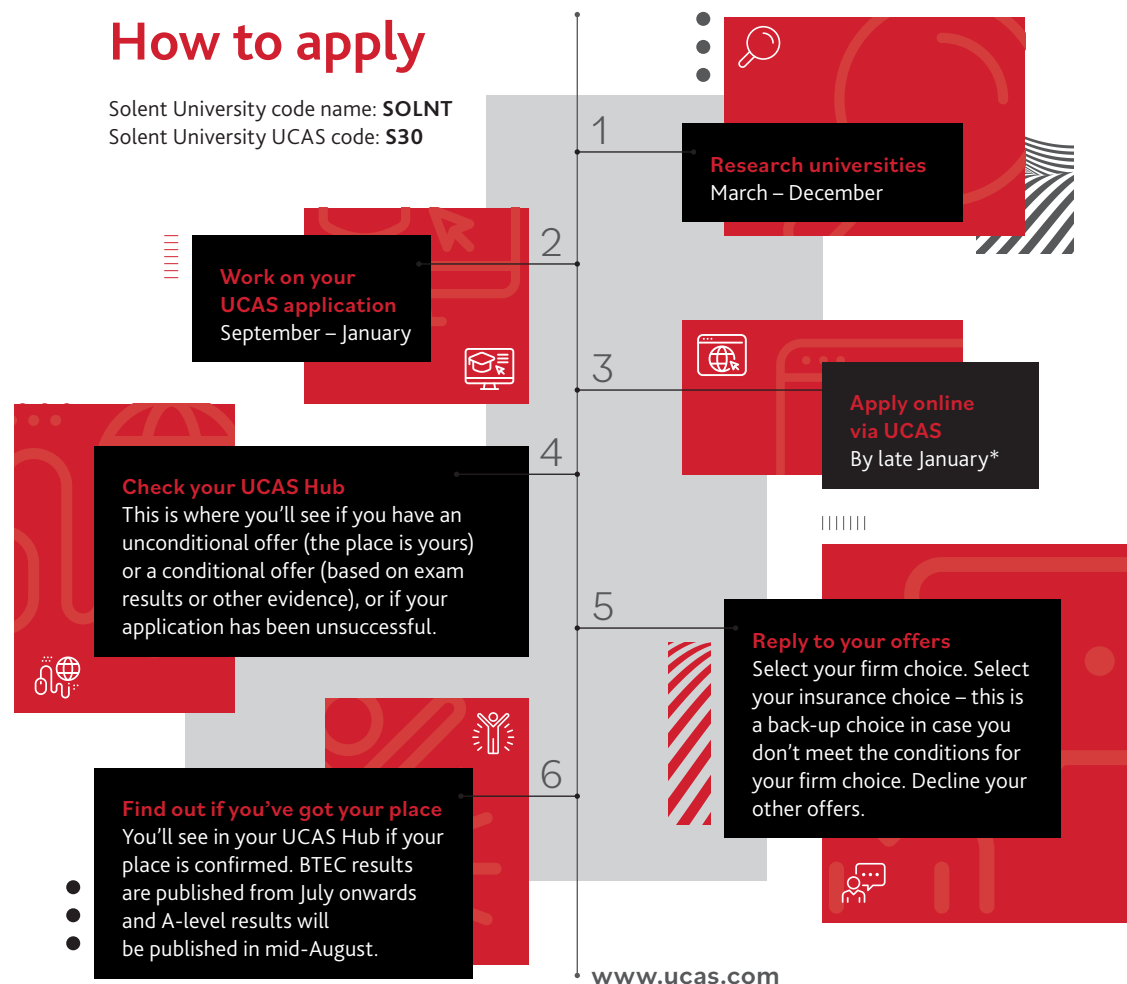
HNC courses	UCAS tariff points	Course length
HNC Architectural Technology	16	2 years part-time
HNC Civil Engineering	16	2 years part-time
HNC Construction Management	16	2 years part-time
HNC Construction Management Practice	16	2 years part-time
HNC Construction Quantity Surveying	16	2 years part-time
HNC Quantity Surveying	16	2 years part-time

Postgraduate courses	Entry requirements	Course length
MSc Sustainable Building Design	2.2	1 year full-time 2 years part-time
MSc Sustainable Construction Management	2.2	1 year full-time 2 years part-time
MSc Sustainable Refurbishment	2.2	1 year full-time 2 years part-time

Apprenticeship standard	Course
Civil Engineering Senior Technician	HNC Civil Engineering
Construction Site Supervisor	HNC Construction Management
Construction Site Manager	BSc (Hons) Construction Management
Construction Quantity Surveying Degree	BSc (Hons) Construction Quantity Surveying Degree Apprenticeship
Construction Quantity Surveying Technician	HNC Quantity Surveying

How to apply

Solent University code name: **SOLNT**
Solent University UCAS code: **S30**



* Applications to Solent University are open until 30 June, after this point you will be automatically entered into Clearing.

52 weeks to go

Thinking about university but not sure what's next? Cut through the confusion and get ready for uni with our friendly weekly breakdown, offering advice and tips on every step of the way - from picking a course that's right for you to applying, enrolling and moving in.

Follow along at www.solent.ac.uk/52-weeks



Discover our courses

Southampton Solent University,
East Park Terrace, Southampton SO14 0YN

Course enquiries: +44 (0)23 8201 3039

Main switchboard: +44 (0)23 8201 3000

Email: admissions@solent.ac.uk

www.solent.ac.uk

-  [solentuniversity](https://www.facebook.com/solentuniversity)
-  [@solentuni](https://twitter.com/solentuni)
-  [solentuniversity](https://www.instagram.com/solentuniversity)
-  [solentuni](https://www.youtube.com/solentuni)
-  [Solent University](https://www.linkedin.com/company/Solent%20University)
-  [@solentuniofficial](https://www.tiktok.com/@solentuniofficial)