

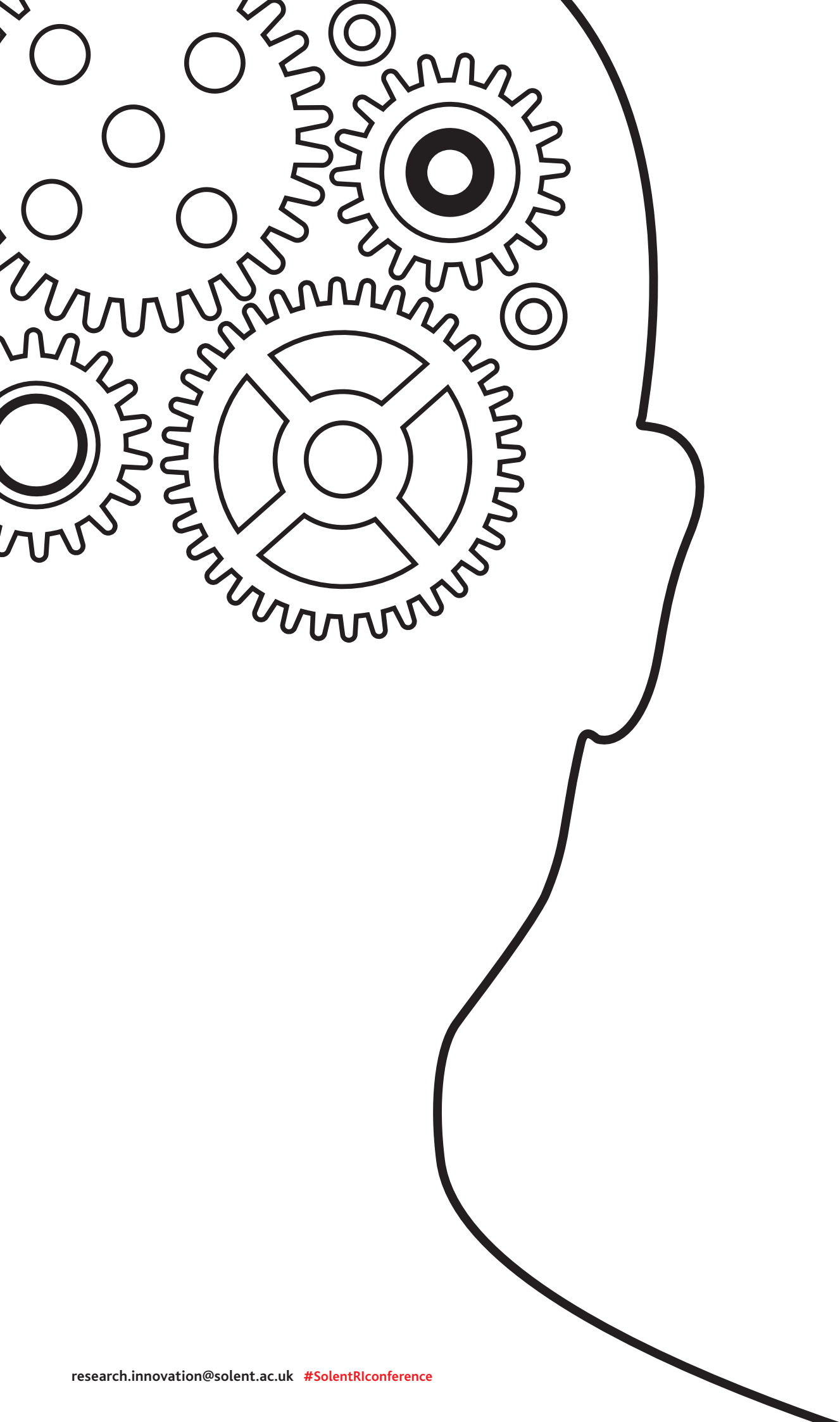
Research and Innovation Conference 2016

Practice-Related Research

Thursday 19 May - Friday 20 May 2016

Southampton Solent University
Conference Centre

Conference programme



Welcome



Graham Baldwin

Research and innovation form a cornerstone of Southampton Solent University's strategic plan. This conference will explore the theme of practice-related research, which is an area of growing strength at the University. We welcome the opportunity to offer you a stimulating range of insights from experts from across the sector, contributions from stakeholders and industry partners and research from the University's staff and students.

This year for the first time the conference will take place over two days and it is a particular pleasure that it will feature presentations from our students across all levels and subject areas. This gives us the opportunity to showcase the impressive depth and breadth of talent and skill among the next generation of researchers as well as that of our academic colleagues.

I hope that everyone will enjoy the conference and benefit from the chance to reflect, to share good ideas and practice, to network and to contribute to shaping the University's future research and innovation.

Professor Graham Baldwin,
Vice Chancellor

Strategic Context



Jane Longmore

Southampton Solent University's Research and Innovation Conference is a key event in our calendar, welcomed by the University community. Each year the University has developed a stronger programme, reflecting the regional, national and international reach of our researchers and innovators. We now have additional impetus provided by the clear commitment to research and innovation in our strategic plan; we wish to be the applied University for Southampton and its region and our practice-related research will help us to achieve this ambition.

The University is keen to promote interdisciplinarity and cross-pollination of ideas, as well as encouraging research-informed teaching and developing students as researchers. With this full agenda, the conference has extended to two days this year and I am sure everyone will be delighted to see the level of engagement from students. The conference committee has worked hard to deliver a programme which reflects both our existing achievements and our ambitious plans for research and I am grateful to them for organising the wide range of keynote speakers, workshop leaders and featured sessions. The conference will offer exciting opportunities for delegates to investigate and explore the theme of practice-related research which lies at the heart of so many innovative projects at the University.

I look forward to welcoming delegates to a vibrant and productive event.

Professor Jane Longmore,
Deputy Vice-Chancellor (Academic)



Introduction

Catherine Lee

I am delighted to welcome you to our annual Research and Innovation Conference. The theme of this year's conference is practice-related research. The programme includes an exciting mixture of poster and oral presentations, workshops and competitions, and a diverse range of eminent keynote speakers. This year will also host the launch of the Solent Research Challenge which is an exciting new development in research and innovation at Southampton Solent University.

Research and innovation at Solent centres around four broad thematic areas: business and society; creative and digital industries; sport, health and wellbeing; and, maritime, technology and environment. In each of these areas, Solent staff and students are undertaking significant projects that aim to develop practical solutions to local, national and international challenges.

This conference is an ideal opportunity to foster and develop ideas, establish new collaborative links, and meet with external experts, stakeholders and partner organisations. The conference committee has worked hard to ensure a stimulating programme and to provide a fertile environment for the ongoing development of research, innovation and knowledge exchange throughout the Solent community.

The conference this year has kindly been sponsored by InterManager, the International Ship Managers' Association. The conference committee extend their warmest thanks to Intermanager for their support for this event.

Catherine Lee,
Director of Research and
Innovation



InterManager
The Research and Innovation Conference Committee is pleased to acknowledge the generous support of its corporate sponsor, InterManager, the international trade association for the ship management industry.

InterManager's sponsorship includes supporting the student competition awards for entries in the categories of Oral Paper, Conference Poster Presentation, Two Minute Dissertation and Three Minute Thesis®. These competitions are taking place at this year's conference for the first time and thanks to InterManager's involvement students will receive prizes to the value of £75 each.

All competitions will run on the first day of the conference (19 May) and the prizes will be announced in the final session of the first day by the Vice Chancellor, Professor Graham Baldwin.

Conference information



Share your thoughts

Tweet about the conference using **#SolentRIconference**, or follow us on twitter **@SolentResearch**



Solent Research Challenge

To find out more about the Solent Research Challenge, please contact:
Research.innovation@solent.ac.uk
Or visit: **www.solent.ac.uk/research**



Wi-Fi

Please ask the registration desk for the Wi-Fi username and password.



Quiet space

A quiet space has been provided for delegates in room SM221. If you require a quiet space to conduct prayers or gather your thoughts throughout the day please ask at the registration desk or main reception for directions.



Contact us

Research.innovation@solent.ac.uk
www.solent.ac.uk/research



Photography and Filming

Please note that a photographer and film crew will be present to record aspects of the conference for promotional use and lecture capture. If you do not wish your image or voice to be used for these purposes, please make this known to the photographer and film crew.



Assistance

If you need any help, please talk to one of the conference organisers (at the conference registration desk throughout the day), a student ambassador or the main reception.

Keynote speakers



Professor George McKay

Professor of Media Studies, University of East Anglia

George McKay joined UEA as Professor of Media Studies in November 2014. Previously he was Professor of Cultural Studies at the University of Salford (2005-14), where he established and directed the Communication, Cultural & Media Studies Research Centre, and Professor of Cultural Studies at UCLan (2000-05).

He is currently engaged as an Arts & Humanities Research Council (AHRC) Leadership Fellow for its Connected Communities Programme (2012-18). In 2015-16 this includes The Impact of Festivals project, in collaboration with research partner EFG London Jazz Festival, and postdoctoral research assistant Dr Emma Webster. He is also co-investigator (2015-18) on the EU Heritage+ project, Cultural Heritage and Improvised Music in European Festivals (CHIME). His most recent publication is *The Pop Festival: History, Music, Media, Culture* (ed., Bloomsbury, 2015).

He was founding co-editor in 2002 of *Social Movement Studies: Journal of Social, Cultural and Political Protest* (Routledge), and associate editor (1993-2002) of the *BAAS Paperback Series* (Edinburgh UP). He was special issue editor of the journal *Popular Music* (28:3; 2009) on the theme of popular music and disability. He currently co-edits the *Connected Communities: Creating a New Knowledge Landscape* series for Policy Press, is a member of the editorial board of *Jazz Research Journal* and consulting editor of *Social Movement Studies*.

Professor McKay's website is georgemckay.org



Dr John Wynne

Reader in Sound Arts, University of the Arts London

John Wynne obtained his PhD from Goldsmiths College, University of London. His research-led practice includes large-scale multi-channel installations for galleries and public spaces, delicate sound sculptures, and 'composed documentaries' for radio. His Installation for 300 speakers, player piano and vacuum cleaner became the first work of sound art in the Saatchi collection and won him the 2010 British Composer Award for Sonic Art.

An installation developed through a project with speakers of highly endangered 'click languages' in the Kalahari Desert showed at the Botswana National Museum, the National Art Gallery of Namibia, and at SOAS in London, as well as an award-winning half-hour commission for BBC Radio and an app developed in collaboration with the Hans Rausing Endangered Languages Project. *Anspayaxw*, an installation based on one of Canada's endangered indigenous languages has shown at prestigious venues in the USA and Canada.

John was artist-in-residence for one year at Harefield Hospital, one of the world's leading centres for heart and lung transplantation. His work there with photographer Tim Wainwright led to a book, an immersive installation and another half-hour Radio 3 commission. Current projects include working with kidney and liver transplant patients and live donors at the Royal Free Hospital for a show at the Hunterian Museum in late 2016, a project on sleep and noise in hospitals, and a project on gender identity in Botswana.



Professor Judith Mottram

Professor of Visual Arts & Dean of the School of Material, Royal College of Art, London

Professor Judith Mottram's research interests include colour, drawing and pattern, and the inter-relationships between subject knowledge, creativity, research and practice. She was a member of the UK HEFCE REF 2014 sub-panel for Art and Design: History, Practice and Theory, is a Fellow of the Design Research Society, and a member of the Coventry Cathedral Fabric Advisory Committee.

After studying painting at Manchester Polytechnic and Reading University, Professor Mottram completed a PhD at Manchester Polytechnic in 1988. She has been affiliated with Coventry University (2012-14); Nottingham Trent University, (2009-12, Dean of Art and Design; 2004-9 Associate Dean Research, Art, Design & Built Environment); and Loughborough University (2000-3, Director of Research, School of Art and Design).

Her publications have included: *Creativity and art education: gaps between theories and practices* (2015), *Colour in the Designed Environment* (2012); *Researching Research in Art* (2009), AHRC Research Review, *Practice-led Research in Art, Design and Architecture* (2007), *Contemporary Artists and Colour: meaning, organisation and understanding* (2006).



Programme of events: Day 1 19 May 2016

8.15 - 9.00am	Registration and breakfast Location: Main Reception and Meon Suite
9.00 - 9.15am	Welcome Location: Solent Lecture Theatre Speaker: Professor Graham Baldwin , Vice Chancellor Southampton Solent University
9.15 - 9.30am	Launch of the Solent Research Challenge part one Location: Solent Lecture Theatre Speaker: Catherine Lee , Director of Research and Innovation, Southampton Solent University
9.30 - 10.30am	Keynote 1 Location: Solent Lecture Theatre Speaker: Professor George Mckay , Professor of Media Studies, University of East Anglia <i>'Collaborative research: doing it, and getting it funded'</i>
10.30 - 10.45am	Tea / coffee break Location: Meon Suite
10.45 - 11.30am	Session 1 - Student oral papers <div><div>1A: Business & Society Research and Innovation Hub Location: SJM209</div><div>1B: Creative & Digital Industries Research and Innovation Hub Location: SJM109</div><div>1C: Maritime, Technology & Environment Research and Innovation Hub Location: Avon Suite</div><div>1D: Sport, Health & Wellbeing Research and Innovation Hub Location: SJM214</div></div>
11.30 - 12.15pm	Session 2 - Student conference poster presentations Location: Test Suite
12.15 - 13.15pm	Session 3 - Featured sessions - Beyond the campus Location: Solent Lecture Theatre (12.15 - 12.45pm) 3A: Speakers: Bright Club <i>'A funnier side to public engagement'</i> (12.45 - 13.15pm) 3B: Speakers: Katie Hornby , Knowledge Exchange & Business Development Manager, Southampton Solent University & Pete Taylor , Tavcom <i>'Routes to research and innovation - Knowledge Transfer Partnerships'</i>

13.15 - 14.15pm	Lunch and networking Location: Meon Suite & Test Suite
14.15 - 15.15pm	Session 4 - Two minute dissertation & Three minute thesis® competitions Location: Solent Lecture Theatre
15.15 - 15.30pm	Tea / coffee break Location: Meon Suite & Test Suite
15.30 - 16.30pm	Session 5 - Workshops <div><div>5A: Business & Society Research & Innovation Hub Location: SJM209 Leader: Professor Tansy Jessop, Professor of Research Informed Teaching, Southampton Solent University <i>'Daring, daunting or daft? Doing research from Day 1 at University'</i></div><div>5B: Creative & Digital Industries Research & Innovation Hub Location: SJM109 Leader: Michael Burton, Artist and Lecturer, Visiting Professor Southampton Solent University <i>'Beyond Utopias: Designing Plastic Futures. Research In and Through Practice'</i></div><div>5C: Maritime, Technology & Environment Research & Innovation Hub Location: Avon Suite Leader: Capt. Kuba Szymanski, Secretary General, InterManager <i>'Research = Communication - are we as good as we think we are?'</i></div><div>5D: Sport, Health & Wellbeing Research & Innovation Hub Location: SJM214 Leader: Professor Richard Tong, Professor of Sport & Exercise Science & Dean of the Cardiff School of Sport, Cardiff University <i>'Using your Research to Develop a Career'</i></div></div>
16.30 - 17.00pm	InterManager sponsored student competition prize-giving and closing remarks Location: Solent Lecture Theatre Speakers: Prof. Graham Baldwin , Vice Chancellor, Southampton Solent University
17.00 - 18.00pm	Networking & Canapes Location: Meon Suite & Test Suite

Programme of events: Day 2 20 May 2016

8.15 - 9.00am	Registration and breakfast Location: Main Reception and Meon Suite
9.00 - 9.15am	Welcome Location: Solent Lecture Theatre Speaker: Professor Jane Longmore , Deputy Vice Chancellor (Academic) Southampton Solent University
9.15 - 9.30am	Launch of the Solent Research Challenge part two Location: Solent Lecture Theatre Speaker: Catherine Lee , Director of Research and Innovation, Southampton Solent University
9.30 - 10.30am	Keynote 2 Location: Solent Lecture Theatre Speaker: Dr John Wynne , Reader in Sound Arts, University of the Arts London <i>'The intersection of research and practice'</i>
10.30 - 11.00am	Session 6 - Conference poster presentations Location: Test Suite
11.00 - 12.30pm	Session 7 - Staff oral papers <div><div>7A: Business & Society Research and Innovation Hub Location: SJM209</div><div>7B: Creative & Digital Industries Research and Innovation Hub Location: Avon Suite</div><div>7C: Maritime, Technology & Environment Research and Innovation Hub Location: SJM106</div><div>7D: Sport, Health & Wellbeing Research and Innovation Hub Location: SJM105</div></div>
12.30 - 13.15pm	Lunch and networking Location: Meon Suite & Test Suite
13.15 - 14.30pm	Session 8 - Featured sessions - Developing research and innovation Location: Solent Lecture Theatre (13.15 - 13.30pm) 8A: Speaker: Professor Tansy Jessop , Professor of Research Informed Teaching, Southampton Solent University <i>'A rough guide to research informed teaching'</i> (13.30 - 14.30pm) 8B: Speakers: Bruce McLelland , Head of Built Environment, Knowledge Transfer Network & Beatrice Rogers , Innovation Design Specialist, Knowledge Transfer Network <i>'Innovation opportunities within emerging technologies, digital design and creativity'</i>

14.30 - 14.45pm	Tea / coffee break Location: Meon Suite & Test Suite
14.45 - 15.45pm	Session 9 - Workshops <div><div>9A: Business & Society Research & Innovation Hub Location: SJM209 Leader: Tere Daly, Director of External Relations, Southampton Solent University <i>'Transferability of practice'</i></div><div>9B: Creative & Digital Industries Research & Innovation Hub Location: Avon Suite Leader: Dr Tim O'Riley, Reader in Printmaking & Digital Practice, Royal College of Art <i>'A collision of sorts - practice, research, interdisciplinarity'</i></div><div>9C: Maritime, Technology & Environment Research & Innovation Hub Location: SJM106 Leader: Bruce McLelland, Head of Built Environment, Knowledge Transfer Network <i>'Challenges and opportunities of collaborative working'</i></div><div>9D: Sport Health & Wellbeing Research & Innovation Hub Location: Test Suite Leader: Dave Meehan, Deputy CEO & Director for Partnerships, Wessex Academic Health Science Network <i>'Maximise research impact through collaboration'</i></div></div>
15.45 - 16.00pm	Tea / coffee break Location: Meon Suite
16.00 - 17.0pm	Keynote 3 Location: Solent Lecture Theatre Speaker: Prof. Judith Mottram , Professor of Visual Arts & Dean of the School of Material, Royal College of Art <i>'Research and its practice in creative disciplines'</i>
17.00 - 17.15pm	Closing remarks Location: Solent Lecture Theatre Speaker: Prof. Jane Longmore , Deputy Vice Chancellor (Academic) Southampton Solent University

Workshop leaders - Day 1

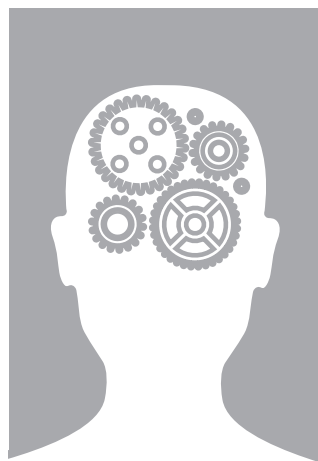


Professor
Tansy Jessop

**Professor of Research Informed Teaching,
Southampton Solent University**

Tansy Jessop has recently joined Southampton Solent University as Professor of Research Informed Teaching. She was previously the Head of Learning and Teaching at the University of Winchester. Tansy's research interests are in assessment and feedback, student engagement, curriculum design, and social justice. Her leadership of the 'Transforming the Experience of Students through Assessment' (TESTA) project has strengthened her belief in the power of the curriculum and discipline-specific approaches to transform the student experience. Tansy is an advocate of research informed teaching as a way of empowering students while generating new knowledge. She began her career as a secondary school teacher in South Africa, completing a PhD on teacher development in rural KwaZulu-Natal. She has published on social justice in education, narrative inquiry, learning spaces and assessment and feedback.

Professor Jessop will also be speaking in a featured session on day two of the conference on the subject of Research Informed Teaching.



Michael
Burton

**Artist & Lecturer, Visiting Professor,
Southampton Solent University**

Michael Burton is an interdisciplinary artist and Visiting Professor at Solent (School of Art, Design and Fashion). He graduated from the Royal College of Art in 2007. He previously worked at Laban contemporary dance conservatoire, and studied Fine Art Sculpture at Bretton Hall, Leeds University. Michael works on the edge of speculative design and art and as a researcher. He creates objects, images, performances and films as insights into richly imagined scenarios exploring the choices we face in our evolution as a species and in redesigning life itself. Michael exhibits and presents internationally, most notably including work shown at the Museum of Modern Art, New York, a tour of galleries in Australia, the National Museum of China, Beijing and the National Taiwan Museum of Fine Art. In Europe performances and exhibitions have included at the Eye Film Institute, Amsterdam, Ars Electronica, Austria, the Biennale Internationale Design, Saint-Etienne and V&A Museum, London. Michael leads an independent and collaborative practice with Michiko Nitta (BurtonNitta), working with organisations and individuals including scientists, performers, choreographers, designers and architects.



Professor
Richard Tong

**Professor of Sport and Exercise Science & Dean of the
Cardiff School of Sport, Cardiff University**

Richard is a Principal Fellow of the Higher Education Academy, a Fellow of BASES and became a National Teaching Fellow in 2011. His research interests focus around high-intensity intermittent exercise with specific reference to rugby. Richard has worked in higher education for over 25 years and has also worked with numerous national and regional rugby teams. He regularly interviews potential applicants and has appointed over 100 members of sport-related staff in his School.



Capt.
Kuba Szymanski

General Secretary, InterManager

Captain Kuba Szymanski started his sea career in 1985. He graduated from the Maritime University of Szczecin with a Master Degree and started his deck officer career with then Dorchester Maritime Limited Isle of Man. He sailed gas/chemical and product tankers, receiving his first command as a Master in 1999.

In 2001, he commenced shore assignment as a Marine Superintendent in the parent Dorchester Maritime Ltd IOM, and was promoted to Marine Manager, DPA in 2004.

In 2007 he joined MOLTANK Ship Management in London as a General Manager. In 2010 he joined InterManager as Secretary General and moved back to the Isle of Man. In 2012 he joined the TK Foundation Board of Directors.

In order to broaden his managerial horizons he studied an Executive MBA with the International Business School Isle of Man / Liverpool John Moores University. Capt. Szymanski has been sail racing for the last 40 years.

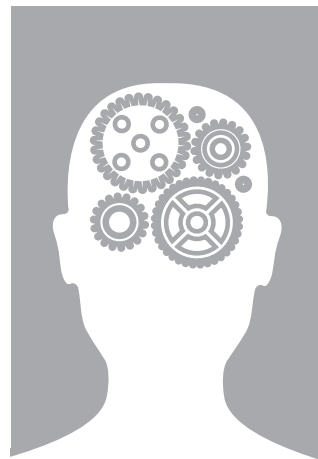
Workshop leaders - Day 2



Tere Daly

Director, External Relations, Southampton Solent University

Before joining Solent, Tere was Deputy Director of Marketing, Recruitment and Admissions at London South Bank University where he oversaw the growth of student enrolments at undergraduate and postgraduate level, as well as developing the business sponsors network. Under his leadership, Tere's Schools and Colleges team at London South Bank University won the THE award for Widening Participation Initiative of the year in 2012. He is a Fellow and Honorary Officer, External Affairs and Insight for the Chartered Management Institute.



Tim O'Riley

Reader in Printmaking & Digital Practice, Royal College of Art

Tim O'Riley studied painting at Leicester Polytechnic and printmaking at Chelsea College of Art and Design where he received an MA in 1992. He went on to complete a PhD at Chelsea in 1998 and was awarded an Arts and Humanities Research Council Fellowship between 2004–8. His work has been exhibited extensively at public venues including the Science Museum in London; Centre d'Art Contemporain Genève; Fundação Calouste Gulbenkian, Lisbon and PS1, New York. He has also exhibited at Galerie Olivier Houg, Lyon; Houldsworth, London; Rubicon Gallery, Dublin and Briggs Robinson, New York, and has work in various private and public collections.



Dave Meehan

Deputy CEO & Director for Partnerships, Wessex Academic Health Science Network

The AHSN was established by the NHS to improve health and create wealth in Wessex. It boasts membership of the five Wessex universities, including Southampton Solent University and twenty one health bodies.

Dave has been with the AHSN since it was formed in 2013 and has worked in the Wessex NHS environment for over 40 years, holding board positions in Primary Care Trusts and Provider organisations for the last 20 years. These have included Director and Managing Director of Clinical Services, Strategy, Service Improvement Management, Communications and Engagement.

Dave is a fellow of the Chartered Institute of Management Accountants and proudly holds a Football League Coaching Licence, demonstrating a passion for football, as well as all sports, and a desire to coach the very best out of every individual.

Featured Session Leaders - Day 1



Bright Club

Bright Club combines research and comedy to educate and entertain, enabling researchers to take their work to a wider audience and share their enthusiasm for it. Originating at University College London it has since been franchised across the UK and is coined 'The Thinking Person's Variety Show'. Early in 2015, a small group of enthusiastic researchers took it upon themselves to create a Bright Club in Southampton. As part of the club's 'offered package' for performing researchers, the team train them up in comedy writing, public speaking, stage presence and also teach them the 'elevator pitch'. These workshops give researchers confidence and are available to all postgrads and academics from all Schools and subject areas. Coming up for its 4th show, Bright Club Southampton provides a unique blend of public engagement, communication skills boosting and alternative city nightlife.



Katie Hornby

**Knowledge Exchange & Business Development Manager,
Southampton Solent University**

Katie Hornby came to Southampton Solent University from Grant Thornton UK LLP, where she provided programme management to the Department for Business Innovation and Skills National Business Growth Service 'Growth Accelerator' and 'Manufacturing Advisory Service' brands – complex bid management for 'access to finance' services to help innovating companies become investor-ready and access business coaching and leadership development to help grow their businesses. Prior to that, she led an eleven-partner Anglo-French marine renewable energy project at Southampton City Council, brokering knowledge exchange interventions between high-profile industry manufacturers and supply-chains, the public sector stakeholders on skills, and economic development strategies. Before this role, she worked at Cumbria County Council managing European policy and programmes where she was involved in FP7-funded international knowledge exchange activities to support the nuclear industry, and also led a waste-to-energy European project to explore public engagement and improved policies for municipal and construction waste. Her earlier HR career involved management and leadership development and regeneration in public and third sector organisations.



Pete Taylor

Tavcom Training

Pete Taylor, works with Tavcom Training, a locally based training provider for professionals in the security sector, developing an innovative e-learning training platform so that the company can penetrate global markets.

Pete studied at Southampton Solent University and has received a 2:1 in BSc (Hons) Computer Games Development. During his 3 years at University, the Games Development course had a strong focus on Object Orientated programming. His main discipline was C++. Pete also has a strong skill-set in Java, IT hardware, software, system building, programming and IT technical support, amounting to a broad range of IT knowledge combined with a strong programming background. His dissertation subject was 'Do games have an effect on behaviour or emotion?'

Pete also worked as a Graduate Associate in Southampton Solent University's Research and Innovation team, where he helped introduce a new training and development programme for academic staff at the University, build the team's web presence and with creating a new database to better manage PhD student progression at Solent.

Featured Session Leaders - Day 2



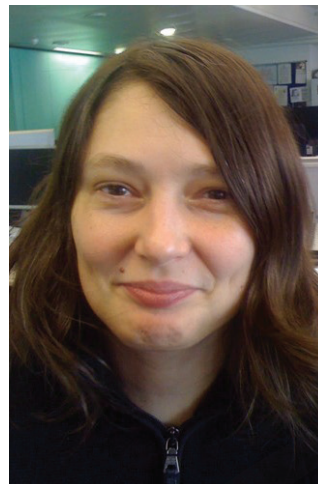
Bruce McLelland

Head of Built Environment, Knowledge Transfer Network (KTN)

As senior manager on the Built Environment and Future Cities programmes, following a number of years developing engineering communities and business partner relationships, Bruce is involved in exploiting the emerging opportunities through the creation and brokering of thought leadership, facilitating networks, knowledge creating events and originating ideas to improve UK innovation.

Bruce has held industry posts as Project Manager for Fujitsu Services supporting health contracts and also account management serving the banking sector; he led the Built Environment Sector operation at Institution of Engineering and Technology, developing strategic initiatives to explore cross-sector technology transfer and problem-solving. Bruce holds a degree in IT Systems Engineering and a post-graduate Diploma in Sound Engineering.

Bruce McLelland will also be leading the workshop session for the Maritime, Technology & Environment Research and Innovation Hub on day two of the conference.



Beatrice Rogers

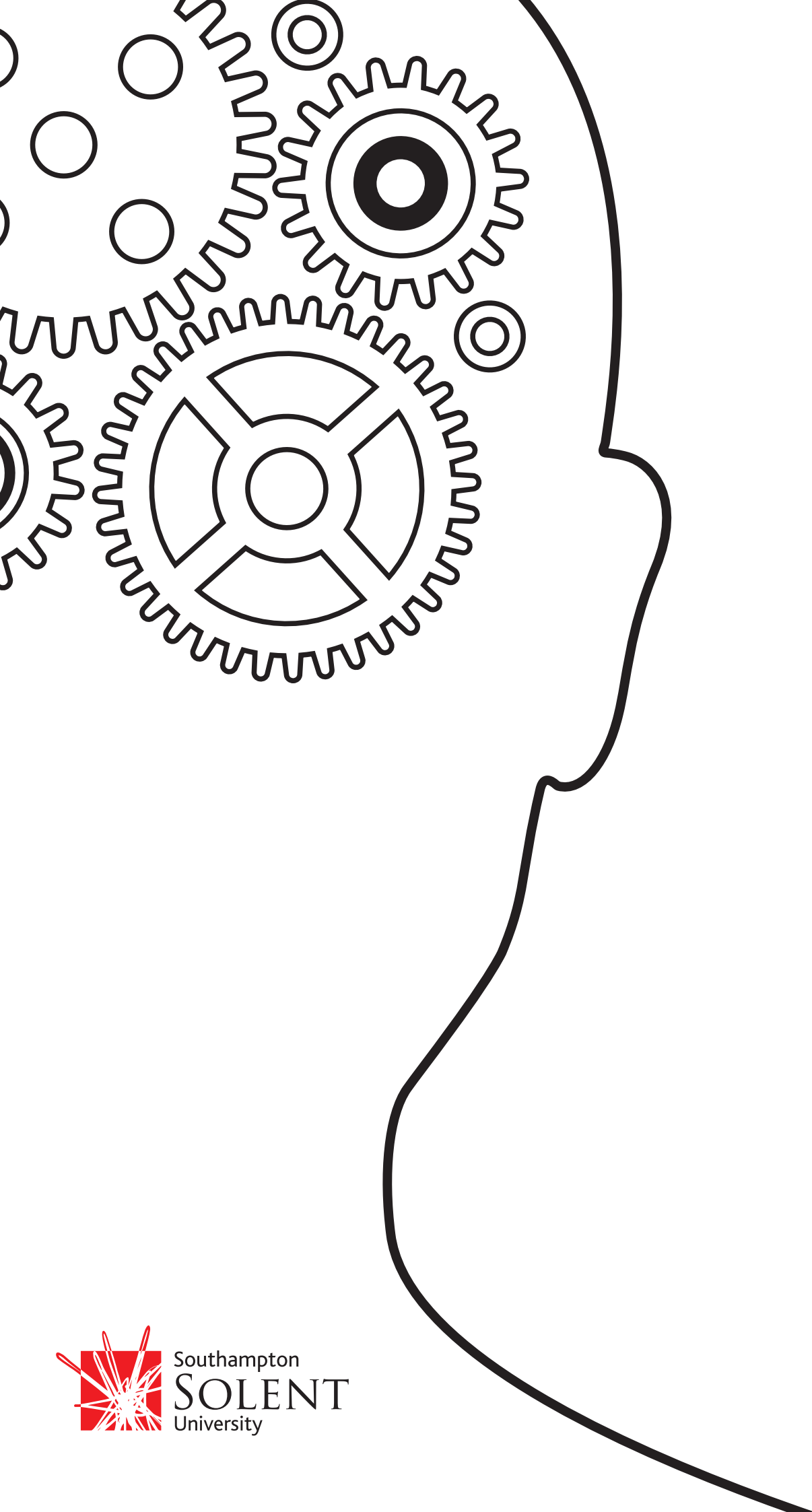
Innovation Design Senior Manager, Knowledge Transfer Network (KTN)

Beatrice is the Innovation Design specialist for the Knowledge Transfer Network (KTN) and works to support the use of design in innovation across KTN's urban living, transport, built environment and energy programmes.

Beatrice has over fifteen years experience in using design approaches to support innovation capacity building and technology policy & delivery across the public, private and third sectors. Previous to her current role, Beatrice was the Head of Design for KTN and led the Design Special Interest Group's "Design in Innovation" programme on behalf of Innovate UK.

Prior to this Beatrice was the Deputy Director for the Creative Industries Knowledge Transfer Network.

Earlier experience has included providing consultancy, research and project management for organisations including the Janet, UK Online, Race Online, London School of Economics (LSE) and Broadband Delivery UK.



Southampton
SOLENT
University



InterManager

International Ship Managers' Association
Promoting Excellence in Ship Management