



Southampton  
**SOLENT**  
University

**BIGGER,  
BETTER,  
BRIGHTER**



# Welcome to East Park Terrace, Southampton Solent University's main campus.

You will see that we have a lot of exciting things happening here, not least of which is the construction of our new £30 million 'Spark' building at the north end of the campus.

Due for completion in early 2016, this stunning five-storey building is just one of the ways we're marking Solent's celebration of ten years of university status.

The new building, designed by Scott Brownrigg and constructed by Interserve, will help us to further enrich the student experience here at Southampton Solent, providing more interactive spaces for study as well as state-of-the-art teaching and learning facilities.

To be named 'The Spark', the new building will be a central, semi-public social learning space as well as a place where people can meet. It will provide staff and students with a dynamic new space in which to study, socialise and share learning experiences.

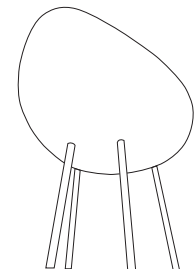
The building's huge, attention-grabbing central atrium will bring a genuine 'wow' factor to the campus, and also enable us to strengthen our connections to local and regional business and community organisations through exhibitions, conferences, events and social functions.

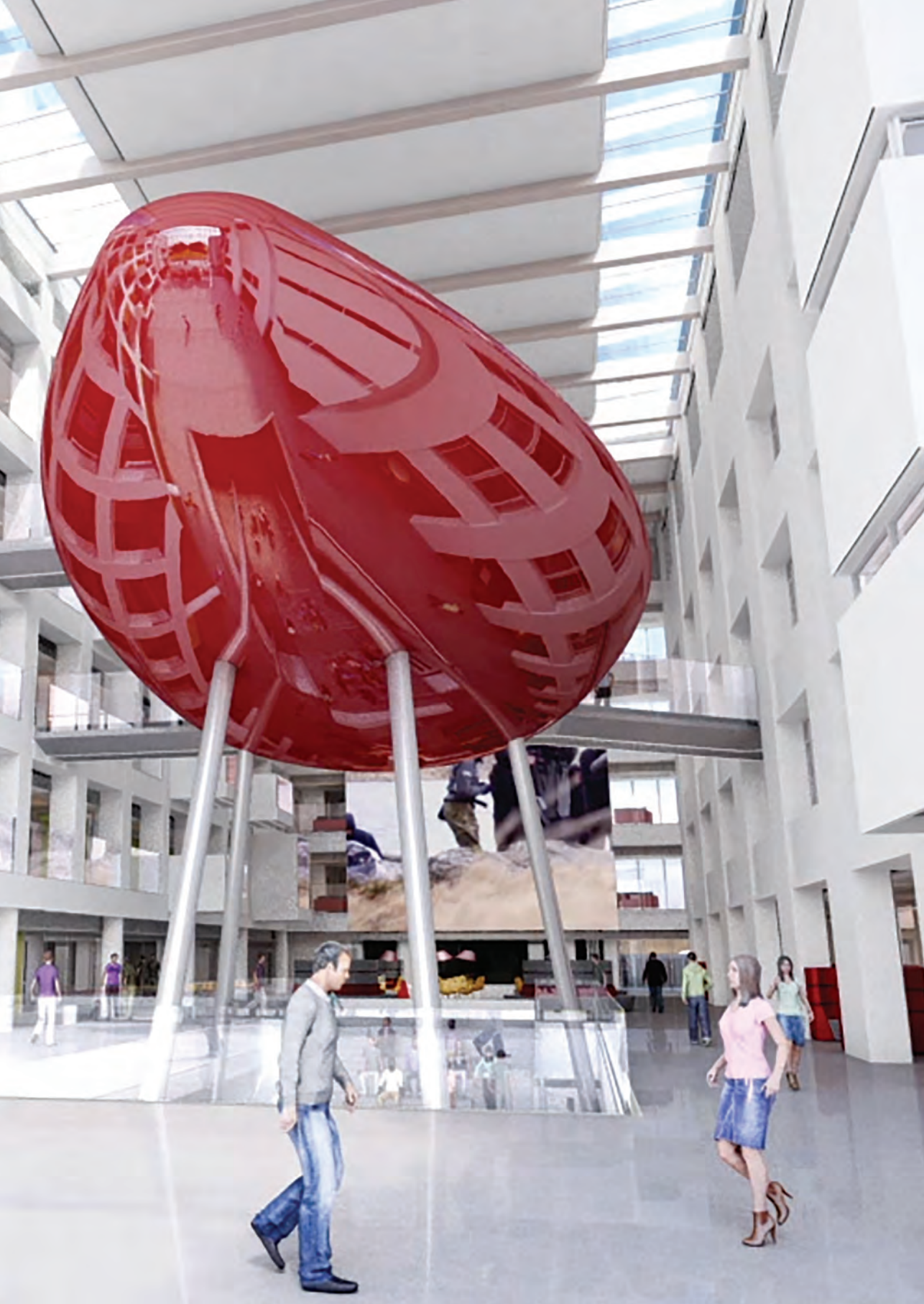
Yet this is just the start. As proud as we are to see the building take shape, it is only part of a £100 million estate development plan which is due to be completed by 2020.

For now, though, I look forward to welcoming you to our campus and sharing our new 'Spark' with you – whether as a student, staff member, visitor or member of the community.



Professor Graham Baldwin  
Vice-Chancellor





## A light and airy atrium

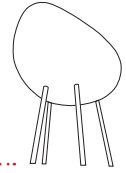
The centrepiece of the new Spark is without a doubt its showstopping full height atrium, featuring an eye-catching supported 'pod'. Uniting the new teaching building and the existing John Millais building to its right, the atrium has been designed as a central semi-public, social learning area and exhibition space.

As well as being a major new gathering area for university staff and students, the twenty- by sixty-metre atrium is also an essential part of the new building's open feel – its dramatic and engaging character reinforced by the distinctive pod, an amphitheatre arrangement, open galleries, bridge walkways and plenty of natural daylight through the full glass frontage and roof glazing.

As well as creating a stunning focal point for the University, the atrium will also link to the rest of the East Park Terrace site, making it easier for staff and students to move around the campus.

The new building will feature teaching and lecture rooms as well as a major new conference centre. The atrium will house centrally located lecture, conference and seminar facilities; social and flexible space for exhibitions, shows and events; and contemporary lighting and audio visual equipment.

Creating a striking addition to the University's East Park Terrace frontage, the new building also heralds the wider regeneration of the city centre as one of the first VIP projects in Southampton's master plan of redevelopment.



.....  
**900 tonnes**  
of steel

.....  
**5,200m<sup>3</sup>**  
of concrete

.....  
**2,900m<sup>3</sup>**  
of glass

.....  
**9km**  
of pipework

.....  
**9,219m<sup>2</sup>**  
floor area

.....  
**390m<sup>2</sup>**  
of solar panels

.....  
**1500**  
light fittings



# It's all about the pod

The futuristic, multi-functional 'pod' supported in the centre of the atrium will feature a full-size lecture room and an open-topped viewing platform, with fantastic views – perfect for an immersive teaching experience.

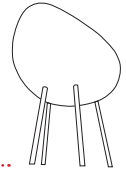
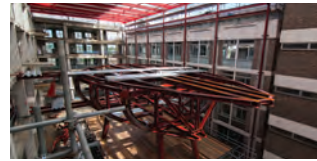
Designed by Scott Brownrigg, the pod is intended to reflect the region's nautical heritage, the University's strong maritime links and our forward-looking ethos.

It also has a strong international flavour, having been designed and manufactured in the Netherlands by CIG Architecture: a company with a history in shipbuilding and a world-class reputation for supplying steel structures for complex architectural and artistic projects.

Among the many iconic projects the company has delivered are the award-winning media centre at Lord's cricket ground, as well as two important elements of the overall vision for London 2012: the cross-Thames cable car system and the cone of the ArcelorMittal Orbit in Stratford's Olympic Park.

CIG Architecture are manufacturing all the individual panels for the pod - creating the futuristic shapes for them in the same way that they create curved panels for ships.

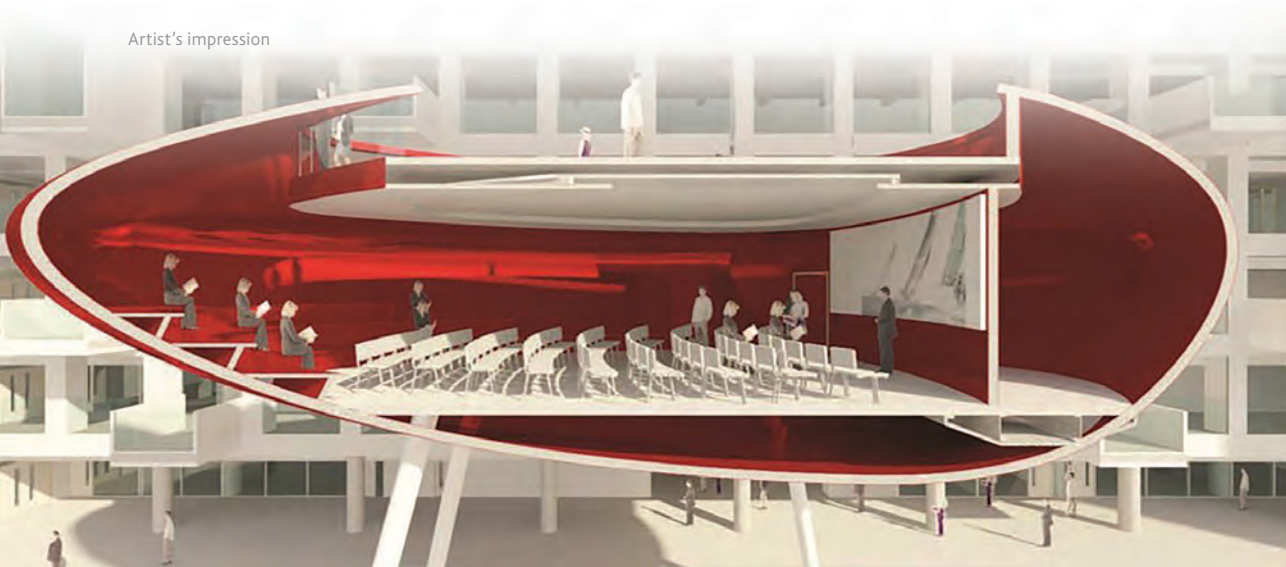
The legs on which the pod will sit were craned into place in March 2015. In June 2015 the pod will arrive at Solent in kit form, for construction on-site by mid-August.



**67 tonnes**  
approximate  
weight of pod

**Each pod leg**  
11 meters long  
0.5m diameter  
2 tonnes+

Artist's impression



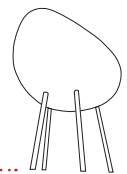
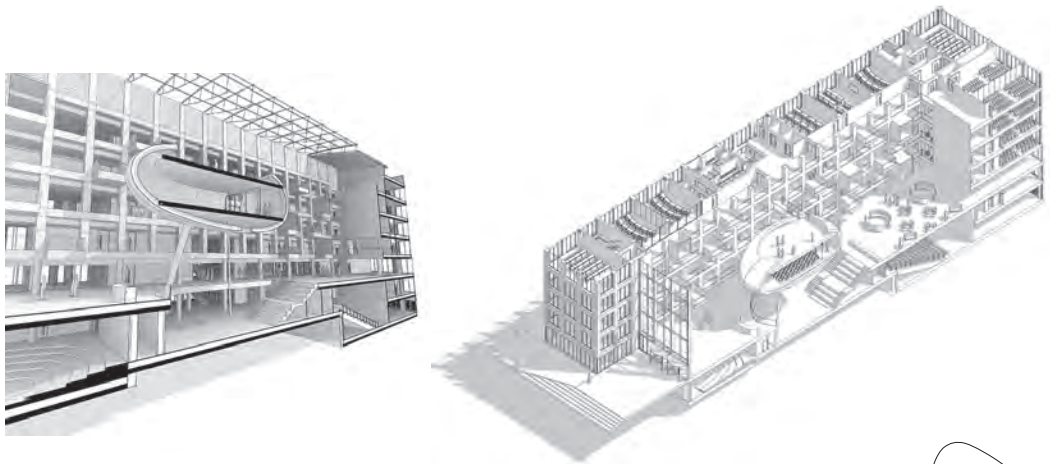
# Modern teaching spaces

Five storeys of lecture and seminar spaces will surround the pod, linking to the existing Sir John Millais building via a series of bridge walkways.

Beneath the pod, a lower atrium will lead to subterranean lecture theatres as well as lower-level classrooms and offices.

Contemporary learning, technical and social spaces will provide everything that a modern university needs to create a supportive technology-enhanced learning environment – one which raises aspirations, promotes entrepreneurship and encourages creativity in staff and students alike.

The building will have spaces and furniture that suit students, whether they learn and study best in a large or small group, or prefer to work independently and reflectively.



**40 teaching spaces**

- 35 classrooms
- 5 lecture rooms

**1500**  
teaching capacity

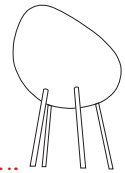
# Building work benefits for students and staff

As well as being able to see the building's steady daily progress, students studying a range of different courses continue to benefit from having a working building site on their doorstep.

The University has worked closely with site contractors Interserve to implement a programme of student curriculum support, with key site staff giving a series of lectures throughout the construction process. Work placements on the site have also provided hands-on opportunities for our students, giving them invaluable professional experience for a career in the construction industry.

Further site visits have widened the benefits among students on Southampton Solent's construction courses, and groups of photography students have also been invited on-site to capture the progress of the build. Students in schools and colleges across the city have benefited too, from site visits of their own and outreach visits to local classrooms.

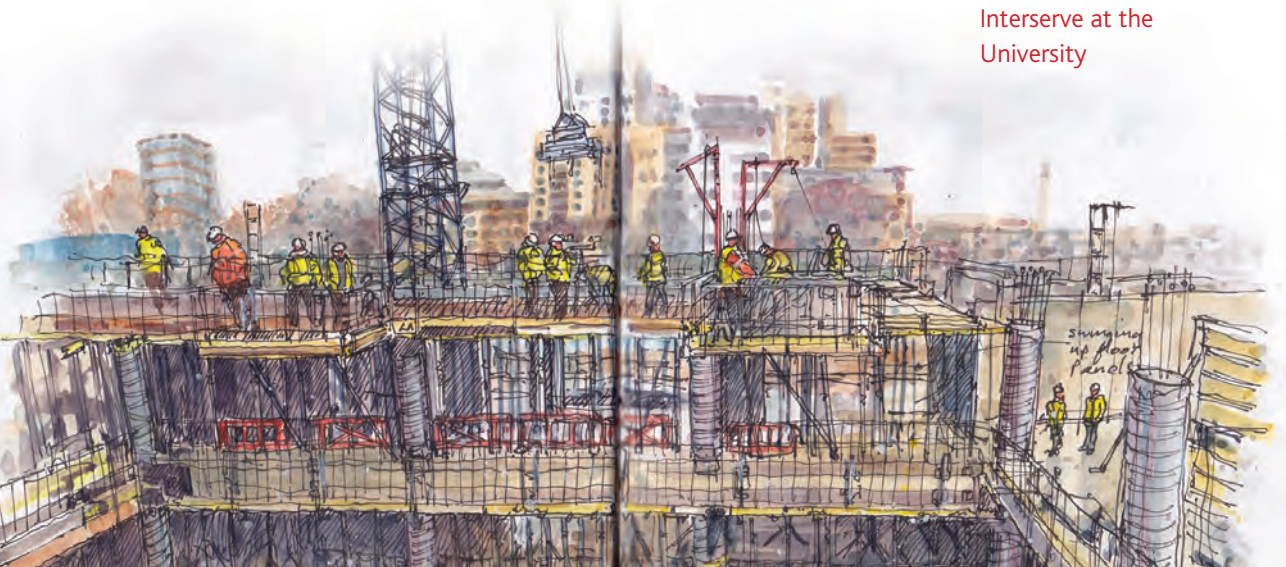
University staff have also found opportunities among the construction project – Peter Jarvis, senior lecturer in drawing and illustration, has been documenting the progress of the build through a series of sketches made from his office window. The beautiful images (some of which are featured here) have drawn admiration from the construction workers that were his subjects, and have received coverage both in the specialist construction media and in fine art and design publications.



**15 school and college site visits**

**5 work experience placements**

**6 lectures delivered by Interserve at the University**







## Conference and community facilities

In addition to contemporary teaching facilities, the new building will provide much-needed city centre conference and exhibition space for local businesses, community groups and more.

The new conference centre will feature two large flexible suites, comprising four meeting rooms with breakout hospitality areas overlooking the atrium, a bookable business centre and a new VIP dining area.

An additional hospitality kitchen is due to be installed, providing fresh, locally sourced food and barista-style refreshments, as well as producing prestige menus for all manner of occasions.

The atrium will also be made available for academic, community and corporate events, ranging from fashion shows to trade shows, award ceremonies to celebrations.

Once completed, this stunning new event space will be available for booking by individuals and local community groups as well as by businesses and public organisations.







Southampton Solent University  
East Park Terrace  
Southampton  
SO14 0YN

Tel: +44 (0)23 8201 3000  
Email: [ask@solent.ac.uk](mailto:ask@solent.ac.uk)

[solent.ac.uk](http://solent.ac.uk)

 [solentuniversity](https://www.facebook.com/solentuniversity)  
 [@solentofficial](https://twitter.com/solentofficial)